

Alberta Live Animal Markets: Visit individual market websites for more information about applicable auction fees and upcoming sales

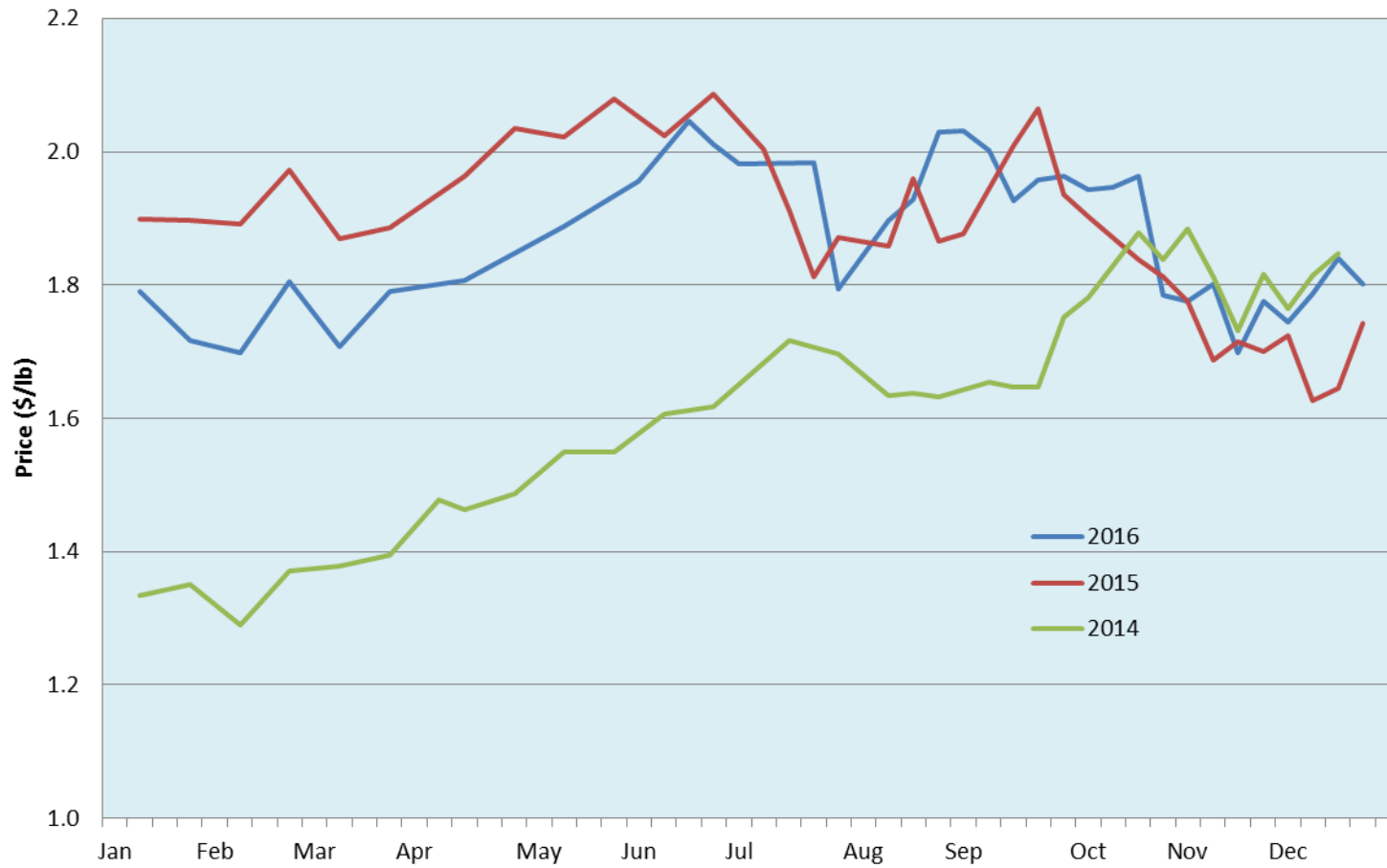
Date	Sale	Lambs (\$/lb)		Lambs (\$/lb)		Lambs (\$/lb)		Sheep(\$/lb): Bred ewes \$/hd		Head
		Weight (lbs)	low - high	Weight (lbs)	low - high	Weight (lbs)	low - high		low - high	
19-Dec-16	Beaver Hill Next sale: 16 Jan 2017 www.beaverhillauctions.com	0-54: wool	2.20 - 2.50	70-85: wool	1.86 - 2.26	86-105:wool	1.80 - 2.13	Ewes: wool	0.95 - 1.50	785
		0-54: hair	2.20 - 2.30			86-105:hair	1.86 - 2.00	Ewes: hair	1.07 - 1.40	
		55-69: wool	1.96 - 2.40	70-85: hair	1.95 - 2.16	106+:wool	1.70 - 1.90	Rams: wool	0.84 - 1.63	
		55-69: hair	2.01 - 2.30			106+:hair	1.72 - 1.84	Rams: hair	0.94 - 1.14	
						Bred Ewes	150 - 220			
						Ewe/Lamb(s)	- - -			
No sale this week	VJV Westlock Next sale: 17 Jan 2017 www.vjvauction.com	0-69: wool	- - -	70-85: wool	- - -	86-105: wool	- - -	Ewes: wool	- - -	-
						86-105: hair	- - -	Ewes: hair	- - -	
		0-69: hair	- - -	70-85: hair	- - -	106+: wool	- - -	Rams: wool	- - -	
						106+: hair	- - -	Rams: hair	- - -	
						Bred Ewes	- - -			
						Ewe/Lamb(s)	- - -			
20-Dec-16	Olds Auction Next sale: 3 Jan 2017 www.oldsauction.com	30-50	1.10 - 2.40	70-80	2.00 - 2.30	90-100	1.75 - 1.85	Ewes	0.70 - 1.20	177 (incl.goats)
		50-60	2.30 - 2.50	80-90	1.85 - 2.00	100-110	1.75 - 1.85	Rams	0.85 - 1.00	
		60-70	2.30 - 2.40			110+	1.75 - 1.80	Bred Ewes	- - -	
17-Dec-16	Picture Butte Next sale: 7 Jan 2017 www.picturebutteauction.ca					Feeder	1.96 - 2.02	Slaughter Ewes	- - -	-
						Slaughter	1.82 - 1.84	Feeder Ewes	- - -	
								Bred Ewes	- - -	
								Rams	- - -	

Ontario Live Animal Markets

19-Dec-16	OSI www.ontariostockyards.on.ca	0-65	2.00 - 3.55	65-80	2.13 - 3.07	95-110	1.84 - 2.17	Sheep	1.40 - 1.60	2320
				80-95	1.81 - 2.30	110+	1.77 - 2.00	Thinner	1.30 - 1.50	
						Feeder	1.60 - 2.10	Rams	1.40 - 1.60	
20-Dec-16	OLEX www.ontariosheep.org	0-50	1.95 - 3.38	65-79	2.15 - 2.71	95-109	2.17 - 2.38	Sheep	1.55 - 2.10	1407
		50-64	2.55 - 3.13	80-94	2.10 - 2.38	110+	2.05 - 2.31			
19-Dec-16	Embrun www.ontariosheep.org	0-50	2.50 - 3.40	65-79	2.55 - 2.70	95-109	1.85 - 2.17	Sheep	1.22 - 1.66	309
		50-64	2.20 - 3.20	80-94	2.37 - 2.72	110+	1.80 - 1.85			
15-Dec-16	Brussels www.ontariosheep.org	0-50	2.45 - 4.07	65-79	2.30 - 3.24	95-109	2.02 - 2.15	Sheep	1.60 - 2.04	603
		50-64	3.05 - 4.01	80-94	2.00 - 2.59	110+	1.75 - 2.19			

Alberta Lamb Producers does not endorse individual markets or verify prices provided.

Trends* in auction price for heavy lambs in Alberta



* Due to differences among auctions, prices are reported as 'trends' rather than averages.
Graph is updated on weeks with three markets reporting prices.