

**Alberta Live Animal Markets: Visit individual market websites for more information about applicable auction fees and upcoming sales**

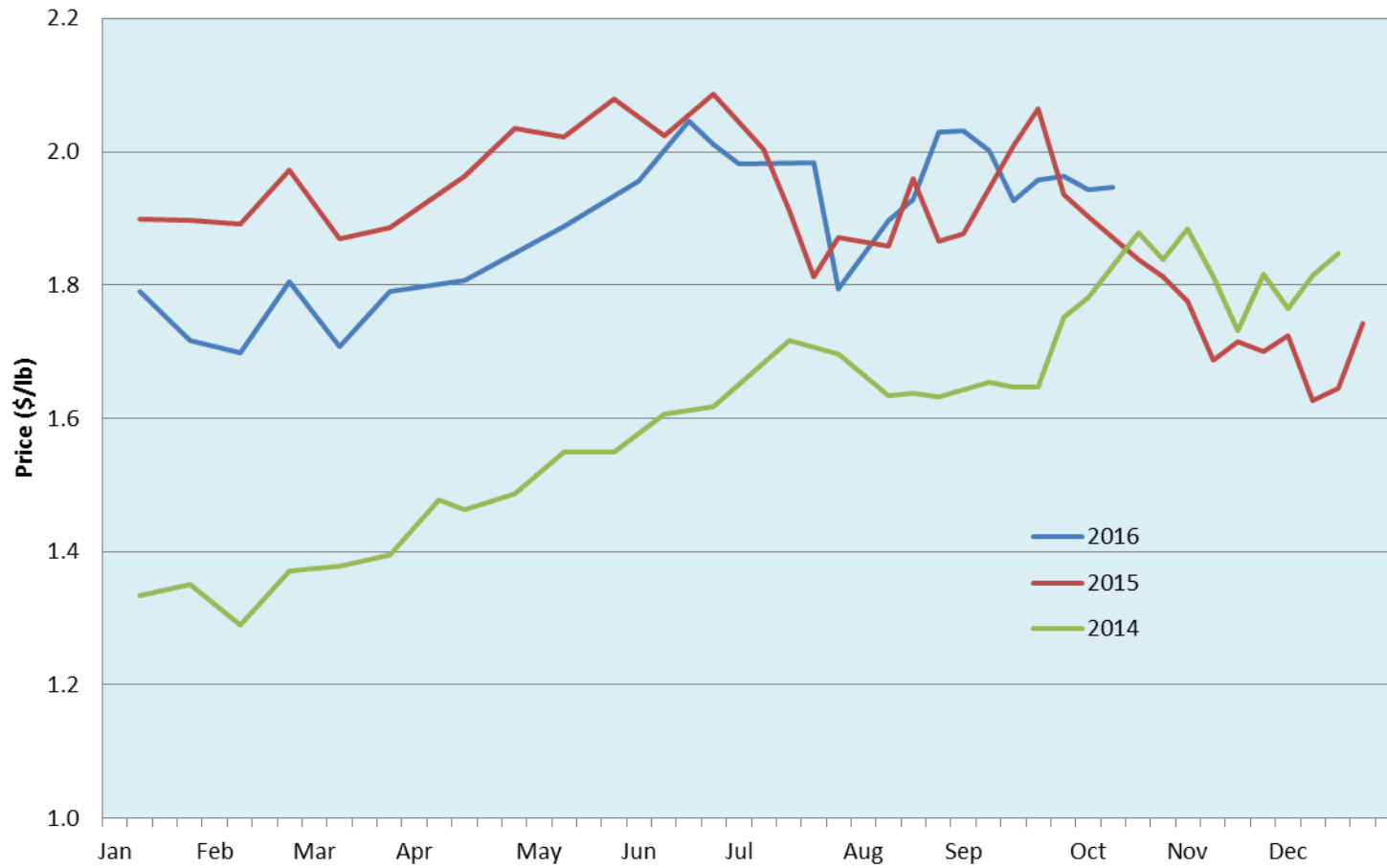
Date	Sale	Lambs (\$/lb)		Lambs (\$/lb)		Lambs (\$/lb)		Sheep(\$/lb): Bred ewes \$/hd		Head
		Weight (lbs)	low - high	Weight (lbs)	low - high	Weight (lbs)	low - high		low - high	
3-Oct-16	Beaver Hill <a href="http://www.beaverhillauctions.com">www.beaverhillauctions.com</a>	0-54: wool	1.80 - 2.20	70-85: wool	1.82 - 2.10	86-105:wool	1.87 - 2.05	Ewes: wool	0.70 - 1.32	1461
		0-54: hair	1.68 - 2.05			86-105:hair	1.70 - 1.92	Ewes: hair	0.70 - 0.91	
		55-69: wool	1.90 - 2.24	70-85: hair	1.70 - 1.98	106+:wool	1.92 - 2.00	Rams: wool	0.85 - 0.95	
		55-69: hair	1.82 - 2.10			106+:hair	1.85 - 1.93	Rams: hair	0.80 - 0.97	
								Bred Ewes	- - -	
						Ewe/Lamb(s)	- - -			
4-Oct-16	VJV Westlock <a href="http://www.vjvauction.com">www.vjvauction.com</a>	0-69	1.80 - 2.11	70-85	1.80 - 2.00	86-105	1.75 - 1.80	Ewes	0.68 - 0.80	367
						106+	1.83 - 1.93	Rams	0.61 - 0.91	
								Bred Ewes	- - -	
								Ewe/Lamb(s)	- - -	
4-Oct-16	Olds Auction <a href="http://www.oldsauktion.com">www.oldsauktion.com</a>	30-50	2.00 - 2.25	70-80	1.95 - 2.10	90-100	1.75 - 2.00	Ewes	0.75 - 1.00	399 <small>(incl.goats)</small>
		50-60	2.00 - 2.25	80-90	1.85 - 2.00	100-110	1.75 - 2.10	Rams	0.80 - 1.10	
		60-70	2.00 - 2.15			110+	1.75 - 2.10	Bred Ewes	150 - 160	
1-Oct-16	Picture Butte <a href="http://www.picturebutteauction.ca">www.picturebutteauction.ca</a>					Feeder	1.99 - 2.18	Slaughter Ewes	0.68 - 0.78	-
						Slaughter	1.92 - 1.97	Feeder Ewes	0.92 - 0.98	
								Bred Ewes	- - -	
								Rams	0.97 - 0.97	

**Ontario Live Animal Markets**

3-Oct-16	OSI <a href="http://www.ontariostockyards.on.ca">www.ontariostockyards.on.ca</a>	0-65	2.20 - 2.55	65-80	2.00 - 2.44	95-110	1.90 - 2.28	Sheep	1.00 - 1.20	1437
				80-95	2.05 - 2.32	110+	1.65 - 2.21	Thinner	0.90 - 1.15	
						Feeder	1.80 - 2.30	Rams	1.00 - 1.20	
4-Oct-16	OLEX <a href="http://www.ontariosheep.org">www.ontariosheep.org</a>	0-50	2.40 - 2.45	65-79	2.18 - 2.54	95-109	2.31 - 2.43	Sheep	1.10 - 1.28	1265
		50-64	2.00 - 2.45	80-94	2.29 - 2.46	110+	2.31 - 2.35			
3-Oct-16	Embrun <a href="http://www.ontariosheep.org">www.ontariosheep.org</a>	0-50	1.62 - 2.00	65-79	1.97 - 2.30	95-109	2.12 - 2.22	Sheep	0.98 - 1.18	424
		50-64	1.70 - 2.15	80-94	1.75 - 2.17	110+	1.20 - 1.77			
29-Sep-16	Brussels <a href="http://www.ontariosheep.org">www.ontariosheep.org</a>	0-50	2.50 - 3.10	65-79	2.40 - 2.85	95-109	2.47 - 2.64	Sheep	0.90 - 1.27	393
		50-64	2.50 - 2.89	80-94	2.34 - 2.59	110+	2.32 - 2.57			

**Alberta Lamb Producers does not endorse individual markets or verify prices provided.**

## Trends\* in auction price for heavy lambs in Alberta



\* Due to differences among auctions, prices are reported as 'trends' rather than averages.  
Graph is updated only for weeks with three markets reporting prices.