

Alberta Live Animal Markets: Visit individual market websites for more information about applicable auction fees and upcoming sales

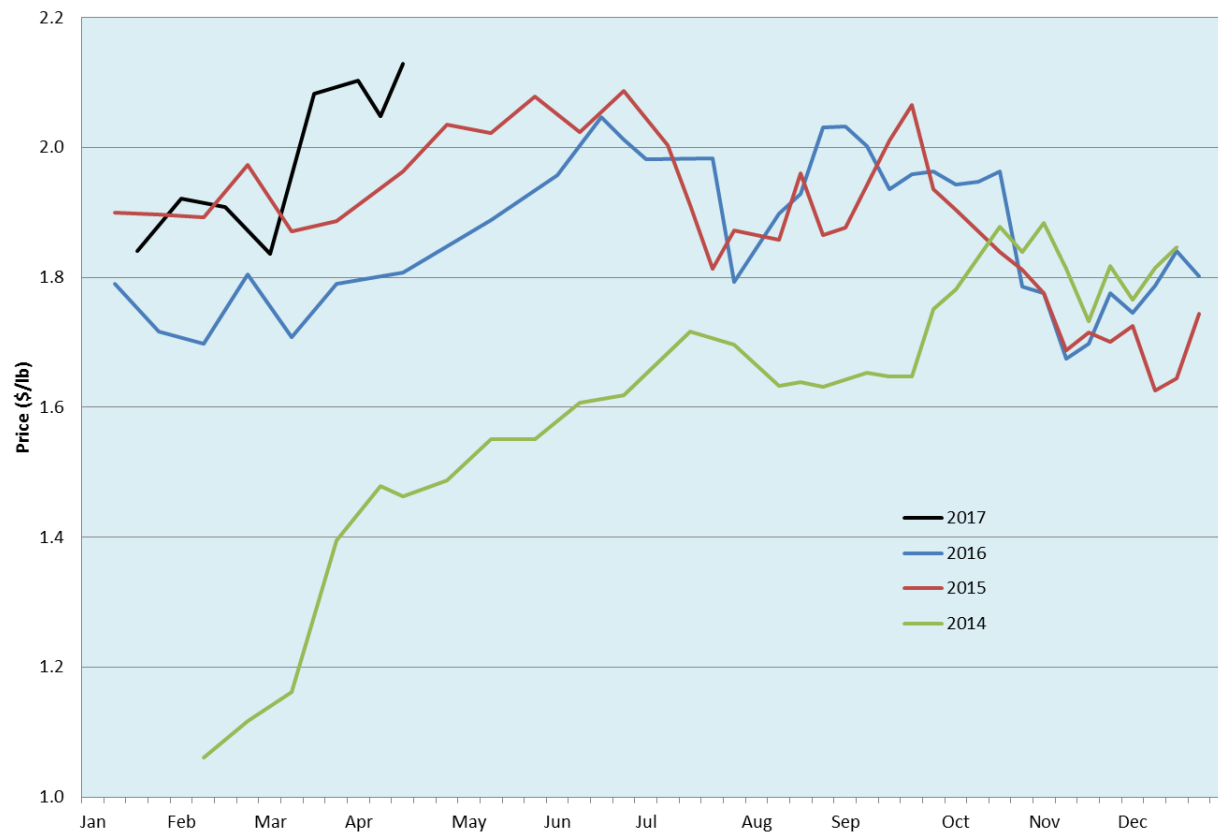
Date	Sale	Lambs (\$/lb)		Lambs (\$/lb)		Lambs (\$/lb)		Sheep(\$/lb): Bred ewes \$/hd		Head
		Weight (lbs)	low - high	Weight (lbs)	low - high	Weight (lbs)	low - high		low - high	
No sale this week	Beaver Hill www.beaverhillauctions.com	0-54: wool	- - -	70-85: wool	- - -	86-105:wool	- - -	Ewes: wool	- - -	-
		0-54: hair	- - -			86-105:hair	- - -	Ewes: hair	- - -	
		55-69: wool	- - -	70-85: hair	- - -	106+:wool	- - -	Rams: wool	- - -	
		55-69: hair	- - -			106+:hair	- - -	Rams: hair	- - -	
						Bred Ewes	- - -			
						Ewe&Lamb(s)	- - -			
No sale this week	VJV Westlock www.vjvauction.com	0-69: wool	- - -	70-85: wool	- - -	86-105: wool	- - -	Ewes: wool	- - -	-
						86-105: hair	- - -	Ewes: hair	- - -	
		0-69: hair	- - -	70-85: hair	- - -	106+: wool	- - -	Rams: wool	- - -	
						106+: hair	- - -	Bred ewes:hair	- - -	
						Bred Ewes:wool	- - -			
						Ewe&Lamb:wool	- - -			
18-Apr-17	Olds Auction www.oldsauction.com	30-50	2.75 - 3.00	70-80	2.40 - 2.60	90-100	2.00 - 2.20	Ewes	0.80 - 1.20	157 (incl.goats)
		50-60	2.50 - 2.75	80-90	2.30 - 2.45	100-110	1.90 - 2.15	Rams	0.80 - 1.15	
		60-70	2.50 - 2.75			110+	1.80 - 2.10	Bred Ewes	- - -	
15-Apr-17	Picture Butte www.picturebutteauction.ca					Feeder	2.20 - 2.55	Slaughter Ewes	1.00 - 1.20	-
						Slaughter	2.08 - 2.18	Feeder Ewes	- - -	
								Ewe&lamb(s)	- - -	
								Bred ewes	- - -	
								Rams	- - -	

Ontario Live Animal Markets

17-Apr-17	OSI www.ontariostockyards.on.ca	0-65	3.50 - 4.00	65-80	3.55 - 3.92	95-110	3.02 - 3.07	Sheep	1.20 - 1.40	369
				80-95	3.60 - 3.70	110+	1.80 - 2.60	Thinner	1.25 - 1.45	
						Feeder	- - -	Rams	1.15 - 1.50	
18-Apr-17	OLEX www.ontariosheep.org	0-50	3.13 - 3.73	65-79	3.05 - 3.75	95-109	3.17 - 3.50	Sheep	1.20 - 1.68	944
		50-64	2.95 - 3.63	80-94	3.13 - 3.50	110+	2.28 - 2.95			
17-Apr-17	Embrun www.ontariosheep.org	0-50	2.15 - 3.10	65-79	3.20 - 3.47	95-109	2.97 - 3.12	Sheep	1.00 - 1.40	180
		50-64	3.30 - 3.50	80-94	2.95 - 3.44	110+	1.20 - 2.70			
13-Apr-17	Brussels www.ontariosheep.org	0-50	3.70 - 4.20	65-79	2.75 - 3.20	95-109	2.46 - 2.76	Sheep	1.11 - 1.38	733
		50-64	3.16 - 3.63	80-94	2.42 - 2.81	110+	2.50 - 2.72			

Alberta Lamb Producers does not endorse individual markets or verify prices provided.

Trends* in auction price for heavy lambs in Alberta



*Due to differences among auctions, prices are reported as 'trends' rather than averages.
This graph is updated on weeks with three markets reporting prices.