

Alberta Live Animal Markets: Visit individual market websites for more information about applicable auction fees and upcoming sales

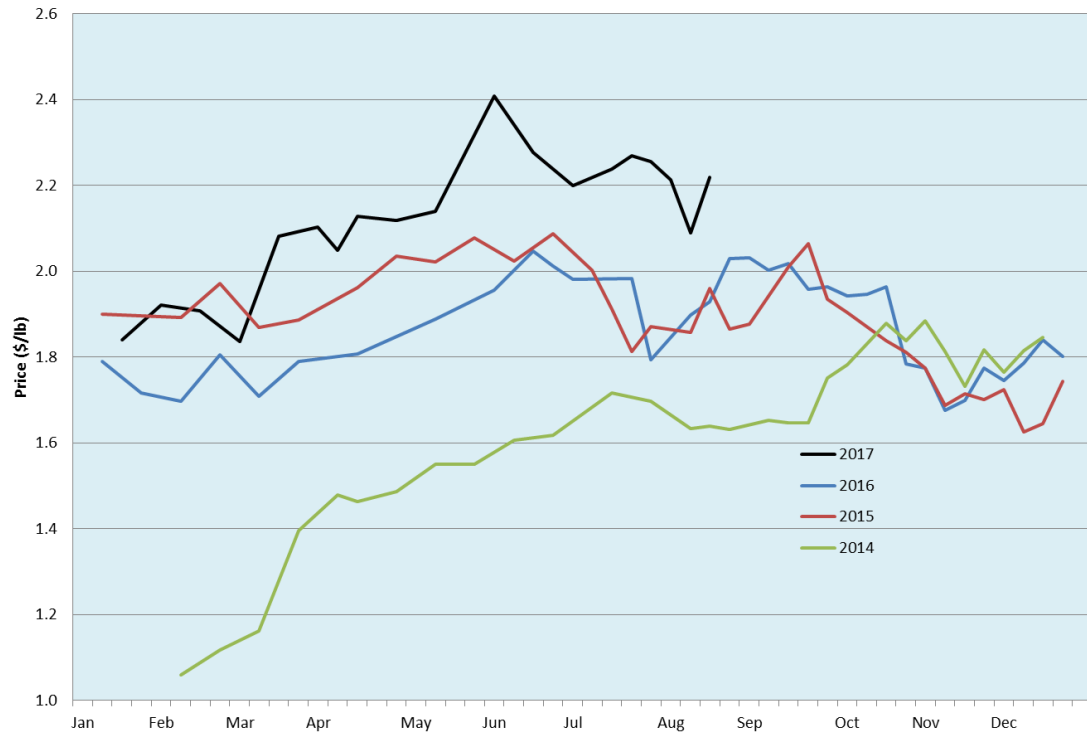
Date	Sale	Lambs (\$/lb)		Lambs (\$/lb)		Lambs (\$/lb)		Sheep(\$/lb): Bred ewes \$/hd		Head
		Weight (lbs)	low - high	Weight (lbs)	low - high	Weight (lbs)	low - high		low - high	
14-Aug-17	Beaver Hill www.beaverhillauctions.com	0-54: wool	2.10 - 2.48	70-85: wool	2.29 - 2.50	86-105:wool	2.17 - 2.46	Ewes: wool	0.96 - 1.63	796
		0-54: hair	1.75 - 2.35			86-105:hair	2.08 - 2.32	Ewes: hair	0.95 - 1.80	
		55-69: wool	2.30 - 2.58	70-85: hair	2.15 - 2.42	106+:wool	1.95 - 2.15	Rams: wool	1.08 - 1.58	
		55-69: hair	2.08 - 2.38			106+:hair	1.80 - 2.05	Rams: hair	1.26 - 1.51	
						Bred Ewes	- - -			
								Ewe&Lamb(s)	- - -	
15-Aug-17	VJV Westlock www.vjvauction.com	0-69: wool	2.28 - 2.58	70-85: wool	2.20 - 3.00	86-105: wool	2.12 - 2.37	Ewes: wool	0.85 - 1.38	391
						86-105: hair	1.55 - 1.65	Ewes: hair	0.98 - 1.43	
		0-69: hair	1.80 - 2.45	70-85: hair	2.05 - 2.08	106+: wool	1.80 - 2.13	Rams: wool	1.00 - 1.80	
						106+: hair	1.72 - 2.00	Rams:hair	1.17 - 4.25	
						Bred Ewes:wool	190 - 210			
								Ewe&Lamb:hair	- - -	
15-Aug-17	Olds Auction www.oldsaction.com	30-50	2.45 - 2.65	70-80	2.35 - 2.60	90-100	2.30 - 2.50	Ewes	1.00 - 1.50	641
		50-60	2.40 - 2.70	80-90	2.35 - 2.60	100-110	2.30 - 2.50	Rams	1.00 - 1.35	
		60-70	2.40 - 2.65			110+	2.30 - 2.50	Bred Ewes	- - -	
12-Aug-17	Picture Butte www.picturebutteauction.ca					Feeder	2.44 - 2.53	Slaughter Ewes	0.97 - 1.00	-
						Slaughter	2.18 - 2.23	Feeder Ewes	1.18 - 1.29	
								Ewe&lamb(s)	- - -	
								Bred ewes	- - -	
								Rams	- - -	

Ontario Live Animal Markets

14-Aug-17	OSI www.ontariostockyards.on.ca	0-65	2.40 - 3.23	65-80	2.55 - 2.86	95-110	2.50 - 2.70	Sheep	1.20 - 1.50	1077
				80-95	2.55 - 2.70	110+	2.30 - 2.55	Thinner	1.25 - 1.60	
						Feeder	2.00 - 2.75	Rams	1.15 - 1.40	
15-Aug-17	OLEX www.ontariosheep.org	0-50	2.93 - 3.28	65-79	2.55 - 2.84	95-109	2.45 - 2.60	Sheep	1.20 - 1.60	1837
		50-64	2.53 - 2.88	80-94	2.56 - 2.72	110+	2.10 - 2.49			
14-Aug-17	Embrun www.ontariosheep.org	0-50	2.30 - 3.00	65-79	2.20 - 2.70	95-109	2.17 - 2.62	Sheep	1.28 - 1.77	683
		50-64	2.35 - 2.66	80-94	2.24 - 2.70	110+	1.45 - 2.46			
10-Aug-17	Brussels www.ontariosheep.org	0-50	2.50 - 3.12	65-79	2.60 - 2.78	95-109	2.41 - 2.47	Sheep	1.32 - 2.02	617
		50-64	2.75 - 2.98	80-94	2.47 - 2.62	110+	2.32 - 2.37			

Alberta Lamb Producers does not endorse individual markets or verify prices provided.

Trends* in auction price for heavy lambs in Alberta



*Due to differences among auctions, prices are reported as 'trends' rather than averages.
This graph is updated on weeks with three markets reporting prices.