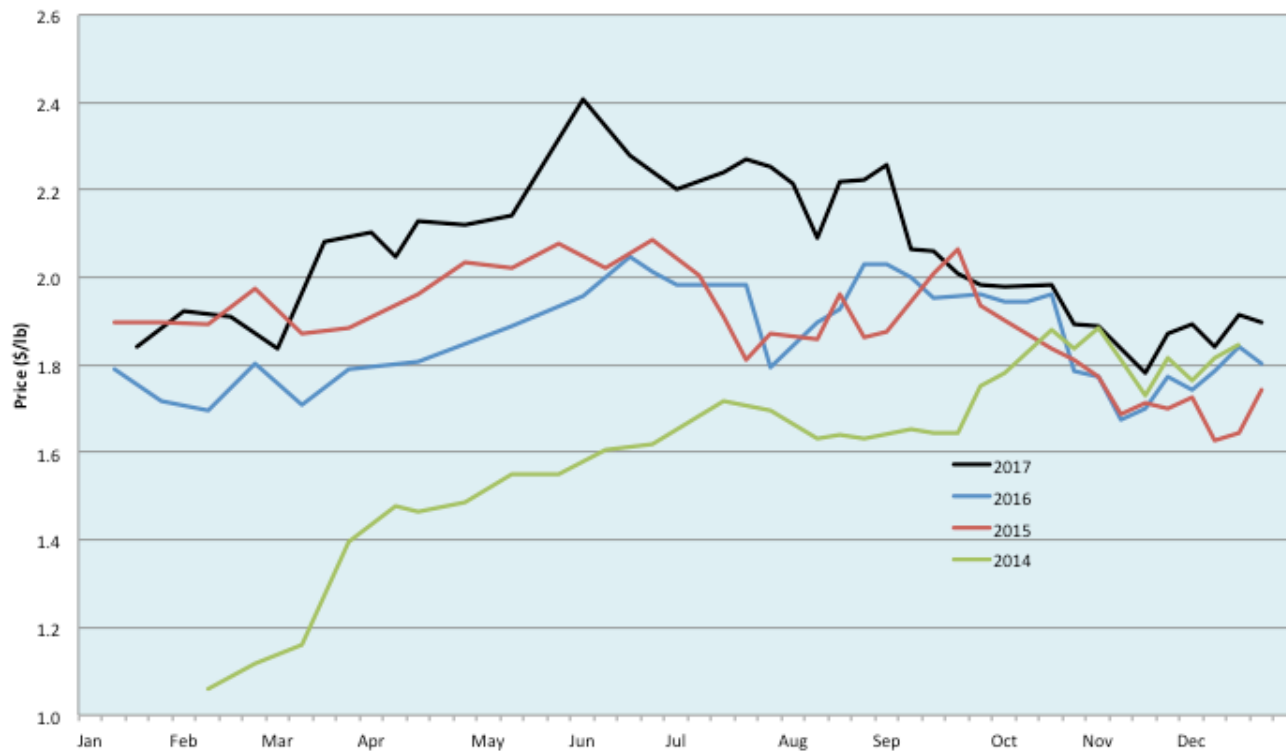


Alberta Live Animal Markets: Visit individual market websites for more information about applicable auction fees and upcoming sales										
Date	Sale	Lambs (\$/lb)		Lambs (\$/lb)		Lambs (\$/lb)		Sheep(\$/lb): Bred ewes \$/hd		Head
		Weight (lbs)	low - high	Weight (lbs)	low - high	Weight (lbs)	low - high		low - high	
18-Dec-17	Beaver Hill www.beaverhillauctions.com	0-54: wool	2.35 - 2.54	70-85: wool	2.00 - 2.36	86-105:wool	1.85 - 2.10	Ewes: wool	1.31 - 1.66	1021
		0-54: hair	1.86 - 2.30			86-105:hair	1.80 - 1.96	Ewes: hair	1.25 - 1.58	
		55-69: wool	2.37 - 2.57	70-85: hair	1.92 - 2.25	106+:wool	1.75 - 1.88	Rams: wool	1.36 - 1.49	
		55-69: hair	2.00 - 2.35			106+:hair	1.68 - 1.81	Rams: hair	1.38 - 1.51	
								Bred Ewes	200 - 290	
						Ewe&Lamb(s)	- - -			
No sale this week	VJV Westlock www.vjvauction.com	0-69: wool	- - -	70-85: wool	- - -	86-105: wool	- - -	Ewes: wool	- - -	-
						86-105: hair	- - -	Ewes: hair	- - -	
		0-69: hair	- - -	70-85: hair	- - -	106+: wool	- - -	Rams: wool	- - -	
						106+: hair	- - -	Rams:hair	- - -	
								Bred Ewes:wool	- - -	
								Ewe&Lamb:hair	- - -	
19-Dec-17	Olds Auction www.oldsauuction.com	30-50	2.00 - 2.60	70-80	2.10 - 2.30	90-100	1.90 - 2.10	Ewes	1.40 - 2.00	149 (incl.goats)
		50-60	2.40 - 2.60	80-90	2.00 - 2.20	100-110	1.90 - 2.10	Rams	1.00 - 1.60	
		60-70	2.30 - 2.50			110+	1.90 - 2.10	Bred Ewes	- - -	
16-Dec-17	Picture Butte www.picturebutteauction.ca					Feeder	1.90 - 2.18	Slaughter Ewes	0.76 - 1.10	-
						Slaughter	1.76 - 2.00	Feeder Ewes	- - -	
								Ewe&lamb(s)	- - -	
								Bred ewes	- - -	
								Rams	- - -	
Ontario Live Animal Markets										
18-Dec-17	OSI www.ontariostockyards.on.ca	0-65	2.62 - 4.25	65-80	2.12 - 3.23	95-110	2.05 - 2.15	Sheep	1.35 - 1.60	1838
				80-95	1.90 - 2.40	110+	1.90 - 2.16	Thinner	1.50 - 1.80	
						Feeder	1.50 - 2.40	Rams	1.35 - 1.80	
19-Dec-17	OLEX www.ontariosheep.org	0-50	3.10 - 4.50	65-79	2.42 - 2.95	95-109	2.00 - 2.20	Sheep	1.50 - 1.90	1972
		50-64	2.72 - 4.30	80-94	2.12 - 2.66	110+	2.12 - 2.21			
18-Dec-17	Embrun www.ontariosheep.org	0-50	2.20 - 2.52	65-79	2.45 - 2.82	95-109	2.05 - 2.35	Sheep	1.67 - 2.02	605
		50-64	2.45 - 3.50	80-94	2.30 - 2.72	110+	1.86 - 2.06			
14-Dec-17	Brussels www.ontariosheep.org	0-50	3.00 - 4.00	65-79	2.05 - 2.95	95-109	1.99 - 2.12	Sheep	1.40 - 1.95	827
		50-64	2.75 - 4.00	80-94	1.82 - 2.29	110+	1.87 - 2.05			
Alberta Lamb Producers does not endorse individual markets or verify prices provided.										

Trends* in auction price for heavy lambs in Alberta



*Due to differences among auctions, prices are reported as 'trends' rather than averages. This graph is updated on weeks with three markets reporting prices.