

Alberta Live Animal Markets: Visit individual market websites for more information about applicable auction fees and upcoming sales

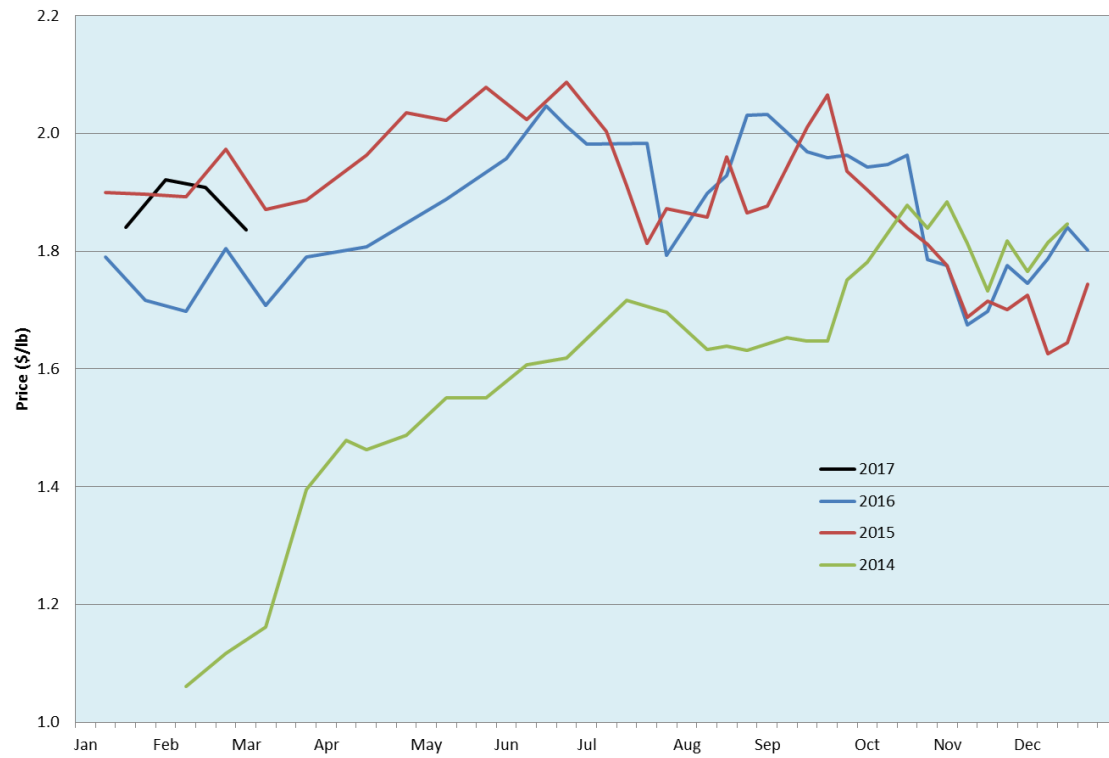
Date	Sale	Lambs (\$/lb)		Lambs (\$/lb)		Lambs (\$/lb)		Sheep(\$/lb): Bred ewes \$/hd		Head
		Weight (lbs)	low - high	Weight (lbs)	low - high	Weight (lbs)	low - high		low - high	
No sale this week	Beaver Hill www.beaverhillauctions.com	0-54: wool	- - -	70-85: wool	- - -	86-105:wool	- - -	Ewes: wool	- - -	-
		0-54: hair	- - -		70-85: hair	- - -	86-105:hair	- - -	Ewes: hair	
		55-69: wool	- - -	70-85: hair		- - -	106+:wool	- - -	Rams: wool	
		55-69: hair	- - -		106+:hair	- - -	Bred Ewes	- - -	Rams: hair	
No sale this week	VJV Westlock www.vjvauction.com	0-69: wool	- - -	70-85: wool	- - -	86-105: wool	- - -	Ewes: wool	- - -	-
		0-69: hair	- - -	70-85: hair	- - -	86-105: hair	- - -	Rams: wool	- - -	
						106+: wool	- - -	Bred ewes:hair	- - -	
		106+: hair	- - -	Bred Ewes:wool	- - -	Ewe&Lamb:wool	- - -			
7-Mar-17	Olds Auction www.oldsauction.com	30-50	2.20 - 2.40	70-80	2.20 - 2.50	90-100	2.15 - 2.60	Ewes	1.00 - 1.50	104 <small>(incl.goats)</small>
50-60	2.40 - 2.50	80-90	2.15 - 2.65	100-110	2.00 - 2.50	Rams	0.90 - 1.40			
60-70	2.30 - 2.50			110+	2.00 - 2.30	Bred Ewes	165 - 200			
4-Mar-17	Picture Butte www.picturebutteauction.ca					Feeder	2.18 - 2.35	Slaughter Ewes	1.02 - 1.08	-
				Slaughter	2.02 - 2.12	Feeder Ewes	1.18 - 1.40			
						Ewe&lamb(s)	210 - 250			
						Bred ewes	188 - 200			
						Rams	0.99 - 1.10			

Ontario Live Animal Markets

6-Mar-17	OSI www.ontariostockyards.on.ca	0-65	3.15 - 3.40	65-80	2.63 - 3.27	95-110	2.20 - 2.30	Sheep	1.25 - 1.50	657
				80-95	2.32 - 2.57	110+	2.25 - 2.32	Thinner	1.35 - 1.72	
						Feeder	1.50 - 2.50	Rams	1.25 - 1.50	
7-Mar-17	OLEX www.ontariosheep.org	0-50	3.48 - 3.58	65-79	2.71 - 3.13	95-109	2.26 - 2.36	Sheep	1.00 - 1.65	1129
		50-64	3.30 - 3.55	80-94	2.40 - 2.75	110+	2.13 - 2.31			
6-Mar-17	Embrun www.ontariosheep.org	0-50	2.05 - 2.30	65-79	3.12 - 3.32	95-109	2.05 - 2.42	Sheep	0.90 - 1.35	215
		50-64	2.60 - 3.15	80-94	2.00 - 3.10	110+	1.95 - 2.05			
2-Mar-17	Brussels www.ontariosheep.org	0-50	3.20 - 3.70	65-79	3.12 - 3.17	95-109	2.12 - 2.34	Sheep	1.07 - 1.62	744
		50-64	3.35 - 3.45	80-94	2.30 - 2.62	110+	2.14 - 2.40			

Alberta Lamb Producers does not endorse individual markets or verify prices provided.

Trends* in auction price for heavy lambs in Alberta



*Due to differences among auctions, prices are reported as 'trends' rather than averages.
This graph is updated on weeks with three markets reporting prices.