

Alberta Live Animal Markets: Visit individual market websites for more information about applicable auction fees and upcoming sales

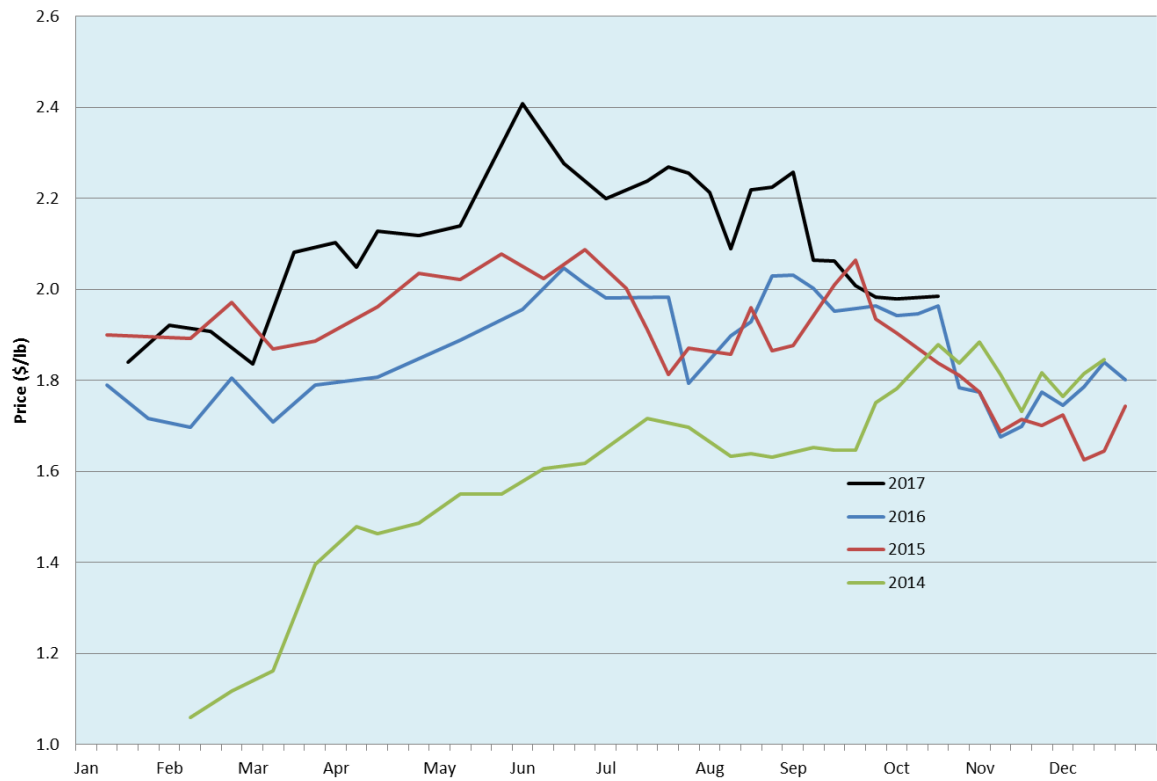
| Date | Sale | Lambs (\$/lb) | | Lambs (\$/lb) | | Lambs (\$/lb) | | Sheep(\$/lb): Bred ewes \$/hd | | Head |
|-----------|---|---------------|-------------|---------------|-------------|----------------|-------------|-------------------------------|--------------|------|
| | | Weight (lbs) | low - high | Weight (lbs) | low - high | Weight (lbs) | low - high | | low - high | |
| 16-Oct-17 | Beaver Hill www.beaverhillauctions.com | 0-54: wool | 1.80 - 2.38 | 70-85: wool | 2.01 - 2.27 | 86-105:wool | 1.90 - 2.09 | Ewes: wool | 0.95 - 1.55 | 1747 |
| | | 0-54: hair | 1.80 - 2.05 | | | 86-105:hair | 1.93 - 1.97 | Ewes: hair | 0.95 - 1.35 | |
| | | 55-69: wool | 2.06 - 2.37 | 70-85: hair | 1.90 - 2.20 | 106+:wool | 1.90 - 2.00 | Rams: wool | 0.85 - 1.45 | |
| | | 55-69: hair | 1.70 - 2.22 | | | 106+:hair | 1.85 - 1.95 | Rams: hair | 0.97 - 1.36 | |
| | | | | | | Bred Ewes | 180 - 250 | | | |
| | | | | | | | | Ewe&Lamb(s) | - - - | |
| 17-Oct-17 | VJV Westlock www.vjvauction.com | 0-69: wool | 1.85 - 2.30 | 70-85: wool | 1.80 - 2.18 | 86-105: wool | 1.85 - 2.05 | Ewes: wool | 0.70 - 1.28 | 605 |
| | | | | | | 86-105: hair | 1.50 - 1.85 | Ewes: hair | 0.72 - 1.15 | |
| | | 0-69: hair | 1.60 - 2.05 | 70-85: hair | 1.72 - 2.03 | 106+: wool | 1.76 - 1.83 | Rams: wool | 0.99 - 1.20 | |
| | | | | | | 106+: hair | - - - | Rams:hair | 1.00 - 1.40 | |
| | | | | | | Bred Ewes:wool | - - - | | | |
| | | | | | | | | Ewe&Lamb:hair | - - - | |
| 17-Oct-17 | Olds Auction www.oldsaction.com | 30-50 | 2.20 - 2.40 | 70-80 | 2.10 - 2.20 | 90-100 | 1.90 - 2.10 | Ewes | 0.70 - 1.00 | 481 |
| | | 50-60 | 2.20 - 2.30 | 80-90 | 2.00 - 2.10 | 100-110 | 1.90 - 2.05 | Rams | 0.85 - 1.10 | |
| | | 60-70 | 2.20 - 2.30 | | | 110+ | 1.90 - 2.05 | Bred Ewes | - - - | |
| | | | | | | | | | (incl.goats) | |
| 14-Oct-17 | Picture Butte www.picturebutteauction.ca | | | | | Feeder | 2.21 - 2.38 | Slaughter Ewes | 0.88 - 0.96 | - |
| | | | | | | Slaughter | 1.98 - 2.08 | Feeder Ewes | 0.88 - 1.05 | |
| | | | | | | | | Ewe&lamb(s) | - - - | |
| | | | | | | | | Bred ewes | - - - | |
| | | | | | | | | Rams | 1.00 - 1.18 | |

Ontario Live Animal Markets

| | | | | | | | | | | |
|-----------|---|-------|-------------|-------|-------------|--------|-------------|---------|-------------|------|
| 16-Oct-17 | OSI www.ontariostockyards.on.ca | 0-65 | 2.00 - 2.95 | 65-80 | 2.43 - 2.85 | 95-110 | 2.17 - 2.40 | Sheep | 1.20 - 1.35 | 1162 |
| | | | | 80-95 | 2.28 - 2.55 | 110+ | 2.06 - 2.12 | Thinner | 1.25 - 1.50 | |
| | | | | | | Feeder | 1.50 - 2.30 | Rams | 1.20 - 1.50 | |
| 17-Oct-17 | OLEX www.ontariosheep.org | 0-50 | 3.00 - 3.53 | 65-79 | 2.23 - 2.93 | 95-109 | 2.28 - 2.41 | Sheep | 1.25 - 1.60 | 1896 |
| | | 50-64 | 2.63 - 3.33 | 80-94 | 2.18 - 2.60 | 110+ | 1.83 - 2.30 | | | |
| 16-Oct-17 | Embrun www.ontariosheep.org | 0-50 | 1.75 - 2.85 | 65-79 | 2.20 - 2.50 | 95-109 | 2.15 - 2.28 | Sheep | 1.04 - 1.60 | 472 |
| | | 50-64 | 2.00 - 2.60 | 80-94 | 2.17 - 2.55 | 110+ | 1.55 - 2.32 | | | |
| 12-Oct-17 | Brussels www.ontariosheep.org | 0-50 | - - - | 65-79 | 2.75 - 3.10 | 95-109 | 2.37 - 2.48 | Sheep | 1.37 - 1.91 | 339 |
| | | 50-64 | 2.75 - 3.15 | 80-94 | 2.30 - 3.07 | 110+ | 2.27 - 2.52 | | | |

Alberta Lamb Producers does not endorse individual markets or verify prices provided.

Trends* in auction price for heavy lambs in Alberta



*Due to differences among auctions, prices are reported as 'trends' rather than averages.
This graph is updated on weeks with three markets reporting prices.