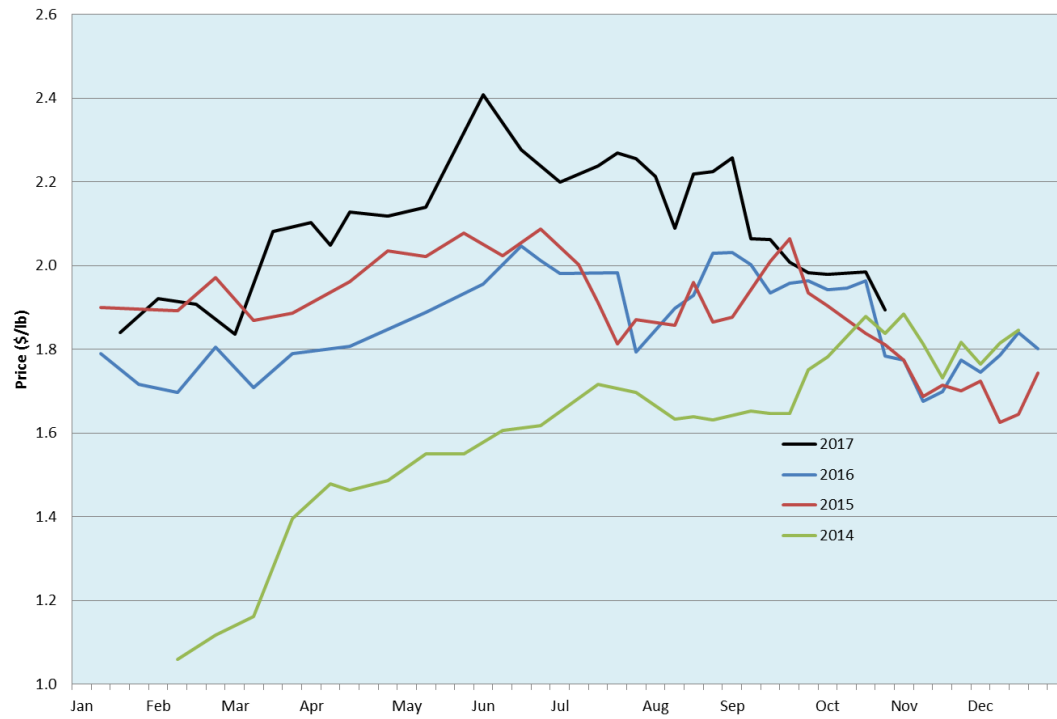


Alberta Live Animal Markets: Visit individual market websites for more information about applicable auction fees and upcoming sales										
Date	Sale	Lambs (\$/lb)		Lambs (\$/lb)		Lambs (\$/lb)		Sheep(\$/lb): Bred ewes \$/hd		Head
		Weight (lbs)	low - high	Weight (lbs)	low - high	Weight (lbs)	low - high		low - high	
23-Oct-17	Beaver Hill www.beaverhillauctions.com	0-54: wool	2.10 - 2.30	70-85: wool	1.95 - 2.25	86-105:wool	1.80 - 2.09	Ewes: wool	0.90 - 1.49	1727
		0-54: hair	1.80 - 2.25			86-105:hair	1.73 - 1.97	Ewes: hair	0.90 - 1.40	
		55-69: wool	1.97 - 2.37	70-85: hair	1.80 - 2.10	106+:wool	1.80 - 1.90	Rams: wool	0.85 - 2.00	
		55-69: hair	1.84 - 2.16			106+:hair	1.65 - 1.80	Rams: hair	0.97 - 1.36	
No sale this week	VJV Westlock www.vjvauction.com	0-69: wool	- - -	70-85: wool	- - -	86-105: wool	- - -	Ewes: wool	- - -	-
						86-105: hair	- - -	Rams: wool	- - -	
		0-69: hair	- - -	70-85: hair	- - -	106+: wool	- - -	Rams:hair	- - -	
						106+: hair	- - -	Bred Ewes:wool	- - -	
24-Oct-17	Olds Auction www.oldsaction.com	30-50	2.10 - 2.30	70-80	2.00 - 2.20	90-100	1.80 - 2.00	Ewes	0.80 - 1.20	240 (incl.goats)
		50-60	2.10 - 2.30	80-90	1.90 - 2.10	100-110	1.80 - 2.00	Rams	0.75 - 1.10	
		60-70	2.10 - 2.30			110+	1.80 - 2.00	Bred Ewes	- - -	
21-Oct-17	Picture Butte www.picturebutteauction.ca					Feeder	2.08 - 2.24	Slaughter Ewes	- - -	-
						Slaughter	1.89 - 1.98	Feeder Ewes	- - -	
								Ewe&lamb(s)	- - -	
								Bred ewes	- - -	
Ontario Live Animal Markets										
23-Oct-17	OSI www.ontariostockyards.on.ca	0-65	1.00 - 2.65	65-80	2.10 - 2.57	95-110	2.04 - 2.18	Sheep	1.20 - 1.30	1501
				80-95	1.95 - 2.23	110+	1.86 - 2.06	Thinner	1.25 - 1.40	
						Feeder	1.00 - 2.00	Rams	1.20 - 1.47	
24-Oct-17	OLEX www.ontariosheep.org	0-50	1.50 - 2.80	65-79	2.10 - 2.58	95-109	1.90 - 2.20	Sheep	1.15 - 1.50	1758
		50-64	2.08 - 2.90	80-94	1.95 - 2.13	110+	1.93 - 2.10			
23-Oct-17	Embrun www.ontariosheep.org	0-50	1.05 - 1.05	65-79	2.10 - 2.55	95-109	1.90 - 2.14	Sheep	1.15 - 1.52	483
		50-64	2.45 - 2.80	80-94	2.05 - 2.35	110+	1.12 - 2.17			
19-Oct-17	Brussels www.ontariosheep.org	0-50	2.60 - 3.30	65-79	2.45 - 3.02	95-109	2.05 - 2.35	Sheep	1.20 - 1.58	361
		50-64	2.48 - 2.95	80-94	2.02 - 2.49	110+	1.95 - 2.27			
Alberta Lamb Producers does not endorse individual markets or verify prices provided.										

Trends* in auction price for heavy lambs in Alberta



*Due to differences among auctions, prices are reported as 'trends' rather than averages. This graph is updated on weeks with three markets reporting prices.