

Alberta Live Animal Markets: Visit individual market websites for more information about applicable auction fees and upcoming sales

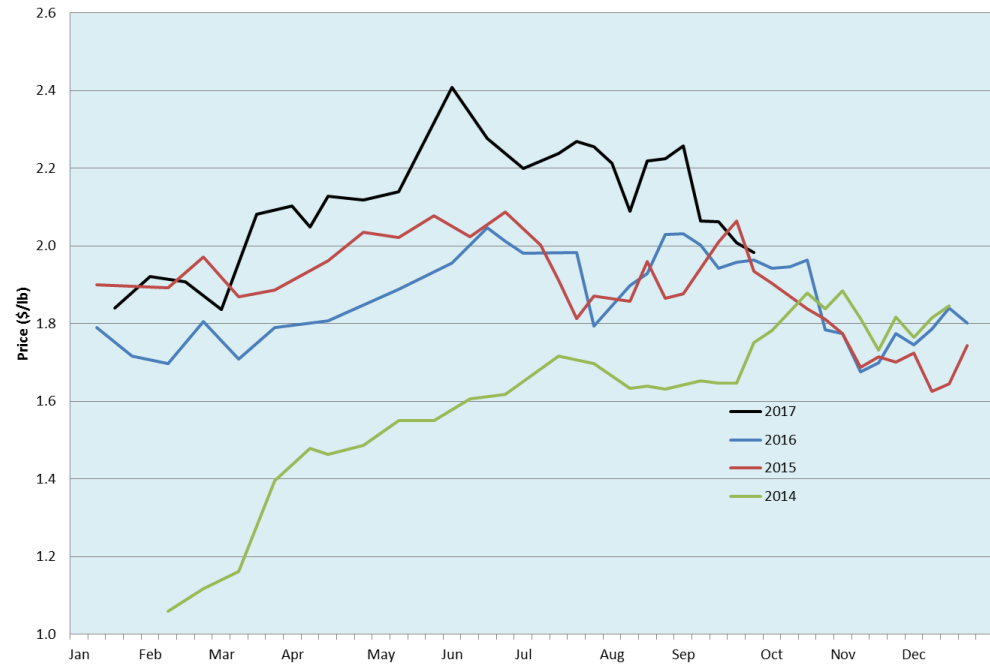
Date	Sale	Lambs (\$/lb)		Lambs (\$/lb)		Lambs (\$/lb)		Sheep(\$/lb): Bred ewes \$/hd		Head
		Weight (lbs)	low - high	Weight (lbs)	low - high	Weight (lbs)	low - high		low - high	
25-Sep-17	Beaver Hill www.beaverhillauctions.com	0-54: wool	1.90 - 2.39	70-85: wool	2.01 - 2.28	86-105:wool	1.88 - 2.14	Ewes: wool	0.95 - 1.55	763
		0-54: hair	1.90 - 2.25			86-105:hair	1.78 - 2.00	Ewes: hair	0.95 - 1.39	
		55-69: wool	2.30 - 2.47	70-85: hair	1.90 - 2.27	106+:wool	1.85 - 2.04	Rams: wool	1.08 - 1.34	
		55-69: hair	2.05 - 2.32			106+:hair	1.85 - 1.97	Rams: hair	1.04 - 1.45	
No sale this week	VJV Westlock www.vjvauction.com	0-69: wool	- - -	70-85: wool	- - -	86-105: wool	- - -	Ewes: wool	- - -	-
						86-105: hair	- - -	Rams: wool	- - -	
		0-69: hair	- - -	70-85: hair	- - -	106+: wool	- - -	Rams:hair	- - -	
						106+: hair	- - -	Bred Ewes:wool	- - -	
26-Sep-17	Olds Auction www.oldsauction.com	30-50	2.20 - 2.45	70-80	2.00 - 2.25	90-100	1.85 - 2.10	Ewes	0.70 - 1.20	490 <small>(incl.goats)</small>
		50-60	2.20 - 2.45	80-90	1.90 - 2.10	100-110	1.85 - 2.10	Rams	0.75 - 1.25	
		60-70	2.10 - 2.30			110+	1.85 - 2.10	Bred Ewes	- - -	
23-Sep-17	Picture Butte www.picturebutteauction.ca					Feeder	2.15 - 2.35	Slaughter Ewes	0.90 - 1.05	-
						Slaughter	1.95 - 2.11	Feeder Ewes	1.00 - 1.23	
								Ewe&lamb(s)	- - -	
								Bred ewes	- - -	

Ontario Live Animal Markets

25-Sep-17	OSI www.ontariostockyards.on.ca	0-65	2.10 - 2.99	65-80	2.26 - 2.70	95-110	2.15 - 2.34	Sheep	1.20 - 1.40	824
				80-95	2.10 - 2.40	110+	1.72 - 2.20	Thinner	1.15 - 1.50	
						Feeder	1.50 - 2.30	Rams	1.15 - 1.50	
26-Sep-17	OLEX www.ontariosheep.org	0-50	2.00 - 3.10	65-79	2.43 - 3.40	95-109	2.30 - 2.41	Sheep	1.20 - 1.60	1106
		50-64	2.80 - 3.53	80-94	2.13 - 2.49	110+	2.30 - 2.44			
25-Sep-17	Embrun www.ontariosheep.org	0-50	1.90 - 1.90	65-79	2.13 - 2.47	95-109	2.00 - 2.15	Sheep	1.35 - 1.55	261
		50-64	1.80 - 2.35	80-94	1.95 - 2.37	110+	1.94 - 1.94			
21-Sep-17	Brussels www.ontariosheep.org	0-50	1.80 - 2.90	65-79	2.10 - 3.04	95-109	2.12 - 2.35	Sheep	1.25 - 1.59	478
		50-64	2.50 - 3.05	80-94	2.12 - 2.30	110+	2.17 - 2.28			

Alberta Lamb Producers does not endorse individual markets or verify prices provided.

Trends* in auction price for heavy lambs in Alberta



*Due to differences among auctions, prices are reported as 'trends' rather than averages.
This graph is updated on weeks with three markets reporting prices.