

Alberta Live Animal Markets: Visit individual market websites for more information about applicable auction fees and upcoming sales

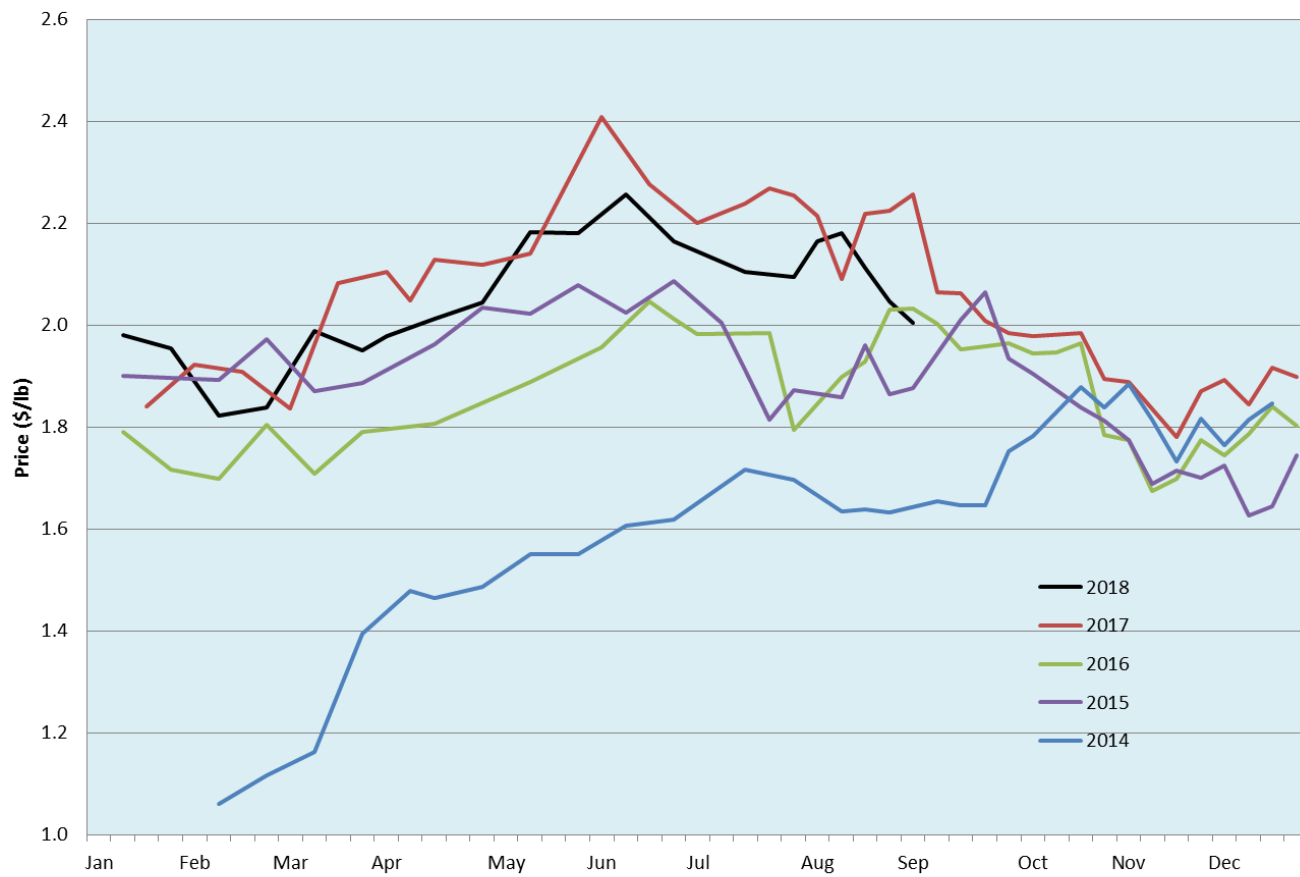
Date	Sale	Lambs (\$/lb)		Lambs (\$/lb)		Lambs (\$/lb)		Sheep(\$/lb): Bred ewes \$/hd		Head
		Weight (lbs)	low - high	Weight (lbs)	low - high	Weight (lbs)	low - high		low - high	
27-Aug-18	Beaver Hill www.beaverhillauctions.com	0-54: wool	1.85 - 2.20	70-85: wool	1.80 - 2.15	86-105:wool	1.90 - 2.20	Ewes: wool	1.00 - 1.84	1344
		0-54: hair	1.62 - 1.95			86-105:hair	1.85 - 2.05	Ewes: hair	0.90 - 1.36	
		55-69: wool	1.85 - 2.25	70-85: hair	1.79 - 1.96	106+:wool	1.90 - 2.18	Rams: wool	1.00 - 1.48	
		55-69: hair	1.75 - 2.10			106+:hair	1.85 - 2.00	Rams: hair	1.14 - 1.40	
						Bred Ewes	165 - 260			
						Ewe&Lamb(s)	- - -			
No sale this week	VJV Westlock www.vjvauction.com	0-69: wool	- - -	70-85: wool	- - -	86-105: wool	- - -	Ewes: wool	- - -	-
						86-105: hair	- - -	Ewes: hair	- - -	
		0-69: hair	- - -	70-85: hair	- - -	106+: wool	- - -	Rams: wool	- - -	
						106+: hair	- - -	Rams:hair	- - -	
						Bred Ewes:wool	- - -			
						Ewe&Lamb:hair	- - -			
28-Aug-18	Olds Auction www.oldsauction.com	30-50	1.80 - 2.10	70-80	1.80 - 2.10	90-100	1.90 - 2.10	Ewes	1.00 - 1.20	438
		50-60	1.80 - 2.10	80-90	1.90 - 2.10	100-110	1.90 - 2.20	Rams	1.00 - 1.10	
		60-70	1.80 - 2.10			110+	1.90 - 2.20	Bred Ewes	- - -	
25-Aug-18	Picture Butte www.picturebutteauction.ca					Feeder	2.00 - 2.18	Slaughter Ewes	0.88 - 0.95	-
						Slaughter	2.00 - 2.08	Feeder Ewes	1.00 - 1.15	
								Ewe&lamb(s)	- - -	
								Bred ewes	- - -	
								Rams	1.86 - 2.05	

Ontario Live Animal Markets

27-Aug-18	OSI www.ontariostockyards.on.ca	0-65	1.60 - 2.35	65-80	2.20 - 2.45	95-110	2.12 - 2.30	Sheep	1.20 - 1.30	959
				80-95	2.10 - 2.25	110+	1.50 - 2.28	Thinner	1.20 - 1.40	
						Feeder	1.50 - 2.10	Rams	1.40 - 1.60	
28-Aug-18	OLEX www.ontariosheep.org	0-50	1.80 - 2.25	65-79	2.13 - 2.98	95-109	2.18 - 2.60	Sheep	0.90 - 1.40	722
		50-64	2.23 - 2.88	80-94	2.00 - 2.55	110+	2.25 - 2.48			
27-Aug-18	Embrun www.ontariosheep.org	0-50	1.95 - 3.00	65-79	2.15 - 2.57	95-109	2.05 - 2.12	Sheep	1.03 - 1.28	463
		50-64	1.75 - 2.25	80-94	2.05 - 2.45	110+	2.05 - 2.35			
23-Aug-18	Brussels www.ontariosheep.org	0-50	1.30 - 2.50	65-79	2.09 - 2.41	95-109	2.15 - 2.20	Sheep	0.70 - 1.35	481
		50-64	2.36 - 2.55	80-94	1.92 - 2.26	110+	1.05 - 2.00			

Alberta Lamb Producers does not endorse individual markets or verify prices provided.

Trends* in auction price for heavy lambs in Alberta



*Due to differences among auctions, prices are reported as 'trends' rather than averages.
This graph is updated on weeks with two or more markets reporting prices.