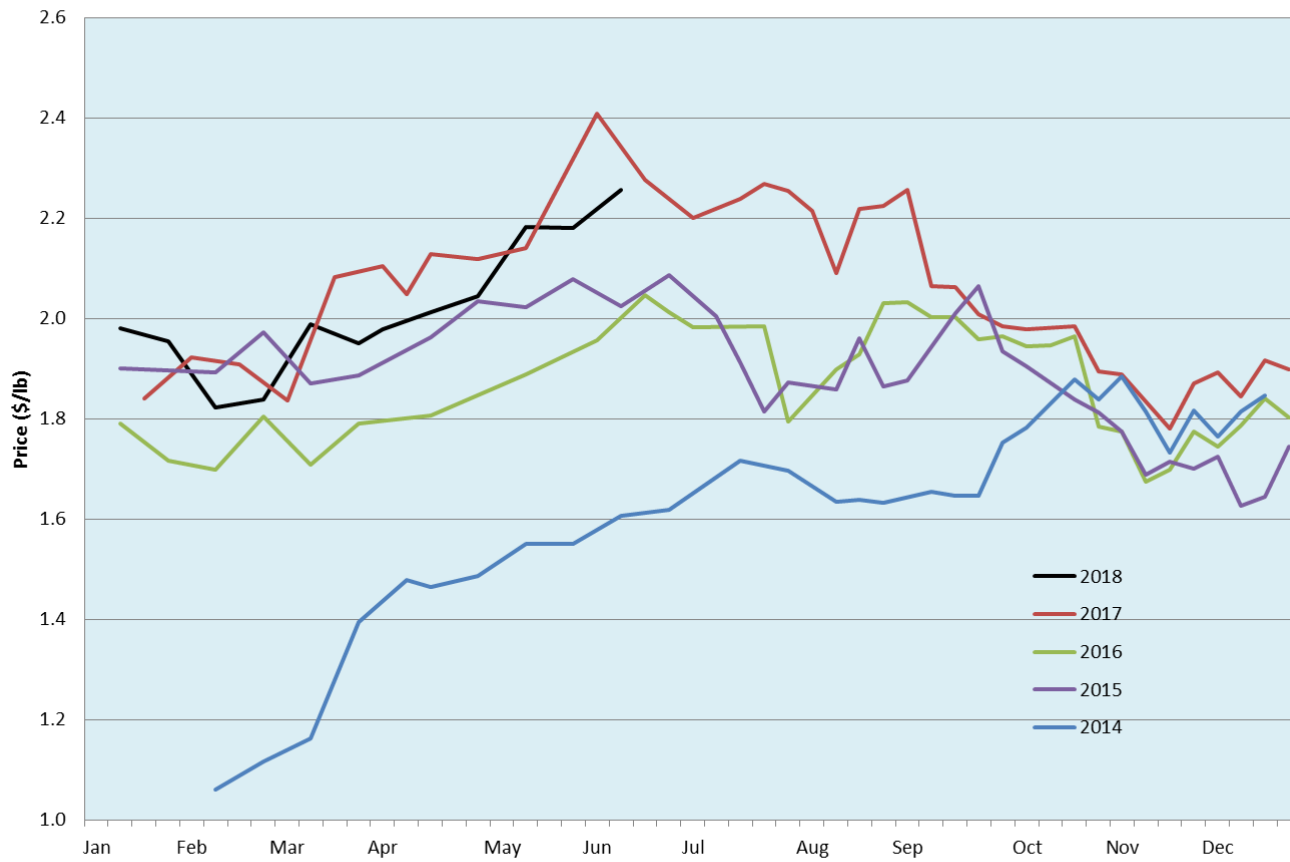


Alberta Live Animal Markets: Visit individual market websites for more information about applicable auction fees and upcoming sales

Date	Sale	Lambs (\$/lb)		Lambs (\$/lb)		Lambs (\$/lb)		Sheep(\$/lb): Bred ewes \$/hd		Head
		Weight (lbs)	low - high	Weight (lbs)	low - high	Weight (lbs)	low - high		low - high	
4-Jun-18	Beaver Hill www.beaverhillauctions.com	0-54: wool	2.50 - 3.00	70-85: wool	2.35 - 2.76	86-105:wool	2.25 - 2.51	Ewes: wool	0.90 - 1.95	1172
		0-54: hair	2.30 - 2.65			86-105:hair	2.20 - 2.40	Ewes: hair	0.90 - 1.73	
		55-69: wool	2.42 - 2.85	70-85: hair	2.30 - 2.55	106+:wool	2.20 - 2.40	Rams: wool	0.75 - 1.66	
		55-69: hair	2.25 - 2.60			106+:hair	2.00 - 2.30	Rams: hair	1.20 - 1.61	
							Bred Ewes	- - -		
							Ewe&Lamb(s)	240 - 375		
No sale this week	VJV Westlock www.vjvauction.com	0-69: wool	- - -	70-85: wool	- - -	86-105: wool	- - -	Ewes: wool	- - -	-
						86-105: hair	- - -	Ewes: hair	- - -	
		0-69: hair	- - -	70-85: hair	- - -	106+: wool	- - -	Rams: wool	- - -	
						106+: hair	- - -	Rams:hair	- - -	
							Bred Ewes:wool	- - -		
							Ewe&Lamb:hair	- - -		
5-Jun-18	Olds Auction www.oldsauction.com	30-50	2.45 - 2.60	70-80	2.40 - 2.60	90-100	2.20 - 2.40	Ewes	0.85 - 1.20	289 (incl.goats)
		50-60	2.45 - 2.60	80-90	2.25 - 2.45	100-110	2.20 - 2.30	Rams	0.90 - 1.15	
		60-70	2.45 - 2.65			110+	2.20 - 2.30	Bred Ewes	- - -	
2-Jun-18	Picture Butte www.picturebutteauction.ca					Feeder	2.38 - 2.54	Slaughter Ewes	0.88 - 0.97	-
						Slaughter	2.18 - 2.25	Feeder Ewes	0.95 - 1.05	
								Ewe&lamb(s)	- - -	
								Bred ewes	- - -	
								Rams	0.86 - 1.25	
Ontario Live Animal Markets										
4-Jun-18	OSI www.ontariostockyards.on.ca	0-65	2.80 - 2.90	65-80	2.65 - 2.80	95-110	2.60 - 2.85	Sheep	1.10 - 1.30	1109
				80-95	2.60 - 2.75	110+	1.90 - 2.40	Thinner	1.20 - 1.50	
						Feeder	2.50 - 2.60	Rams	1.30 - 1.55	
5-Jun-18	OLEX www.ontariosheep.org	0-50	2.80 - 3.35	65-79	2.60 - 3.05	95-109	2.63 - 2.81	Sheep	0.85 - 1.30	1766
		50-64	2.75 - 3.20	80-94	2.58 - 2.88	110+	2.43 - 2.71			
4-Jun-18	Embrun www.ontariosheep.org	0-50	2.65 - 3.00	65-79	2.69 - 2.88	95-109	2.42 - 2.64	Sheep	1.24 - 1.45	642
		50-64	2.62 - 2.85	80-94	2.60 - 2.84	110+	2.62 - 2.62			
31-May-18	Brussels www.ontariosheep.org	0-50	1.20 - 2.25	65-79	2.45 - 2.80	95-109	2.44 - 2.78	Sheep	1.00 - 1.51	608
		50-64	2.22 - 2.85	80-94	2.50 - 2.72	110+	1.97 - 2.58			
Alberta Lamb Producers does not endorse individual markets or verify prices provided.										

Trends* in auction price for heavy lambs in Alberta



*Due to differences among auctions, prices are reported as 'trends' rather than averages.
This graph is updated on weeks with two or more markets reporting prices.