

Alberta Live Animal Markets: Visit individual market websites for more information about applicable auction fees and upcoming sales

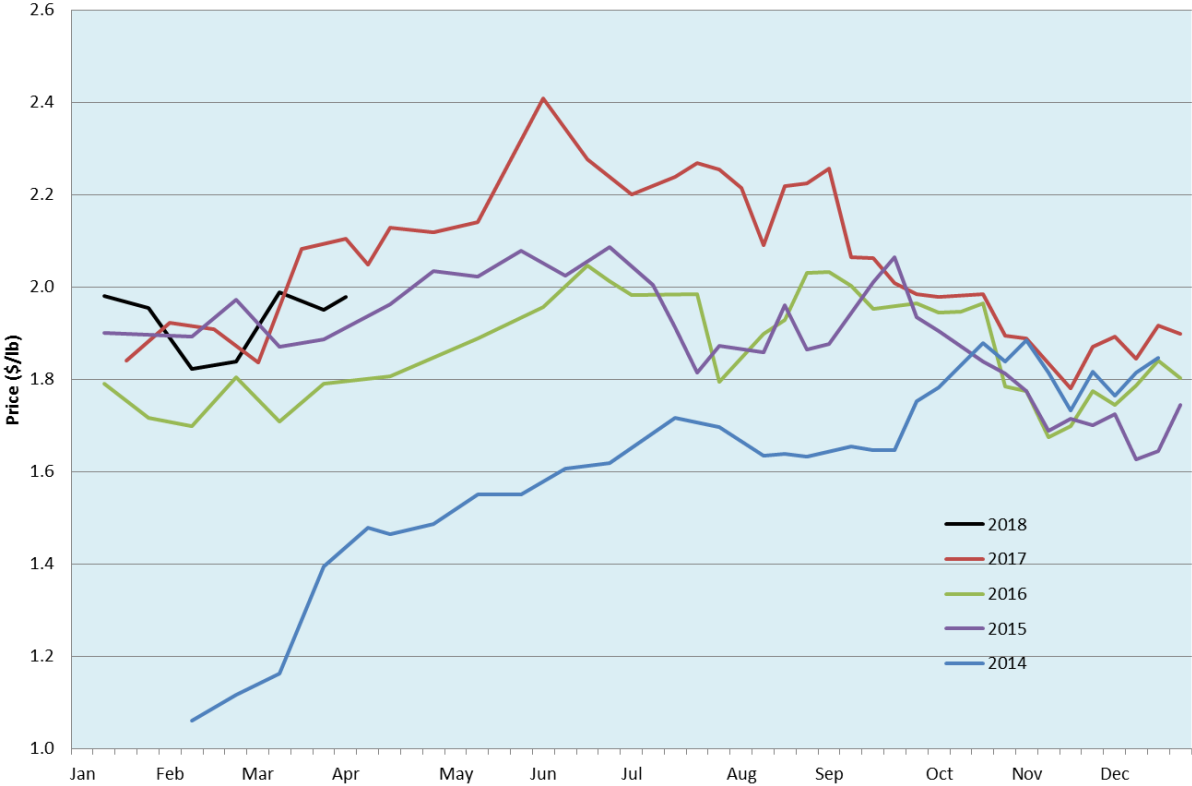
Date	Sale	Lambs (\$/lb)		Lambs (\$/lb)		Lambs (\$/lb)		Sheep(\$/lb): Bred ewes \$/hd		Head	
		Weight (lbs)	low - high	Weight (lbs)	low - high	Weight (lbs)	low - high		low - high		
26-Mar-18	Beaver Hill www.beaverhillauctions.com	0-54: wool	2.30 - 2.90	70-85: wool	2.32 - 2.70	86-105:wool	1.96 - 2.30	Ewes: wool	0.95 - 1.47	806	
		0-54: hair	2.10 - 2.44			86-105:hair	1.90 - 2.15	Ewes: hair	0.90 - 1.32		
		55-69: wool	2.43 - 2.90	70-85: hair	2.10 - 2.45	106+:wool	1.75 - 2.00	Rams: wool	0.96 - 1.20		
		55-69: hair	2.00 - 2.60			106+:hair	1.70 - 1.91	Rams: hair	0.97 - 1.15		
						Bred Ewes	225 - 325				
						Ewe&Lamb(s)	240 - 375				
No sale this week	VJV Westlock www.vjvauction.com	0-69: wool	- - -	70-85: wool	- - -	86-105: wool	- - -	Ewes: wool	- - -	-	
						86-105: hair	- - -	Ewes: hair	- - -		
		0-69: hair	- - -	70-85: hair	- - -	106+: wool	- - -	Rams: wool	- - -		
						106+: hair	- - -	Rams:hair	- - -		
						Bred Ewes:wool	- - -				
						Ewe&Lamb:hair	- - -				
27-Mar-18	Olds Auction www.oldsaction.com	30-50	2.45 - 2.75	70-80	2.35 - 2.65	90-100	2.05 - 2.35	Ewes	0.90 - 1.40	451	
		50-60	2.45 - 2.75	80-90	2.25 - 2.65	100-110	1.90 - 2.15	Rams	0.90 - 1.30		
		60-70	2.45 - 2.65			110+	1.90 - 2.10	Bred Ewes	190 - 240		
24-Mar-18	Picture Butte www.picturebutteauction.ca					Feeder	2.53 - 2.60	Slaughter Ewes	1.08 - 1.11	-	
						Slaughter	1.96 - 2.15	Feeder Ewes	- - -		
								Ewe&lamb(s)	- - -		
								Bred ewes	- - -		
								Rams	- - -		

Ontario Live Animal Markets

26-Mar-18	OSI www.ontariostockyards.on.ca	0-65	2.80 - 4.30	65-80	3.15 - 3.90	95-110	2.85 - 3.21	Sheep	1.15 - 1.35	1243
				80-95	3.00 - 3.43	110+	2.35 - 2.93	Thinner	1.20 - 1.50	
						Feeder	2.50 - 3.00	Rams	1.20 - 1.40	
27-Mar-18	OLEX www.ontariosheep.org	0-50	3.50 - 4.25	65-79	3.10 - 3.98	95-109	2.30 - 2.85	Sheep	1.10 - 1.55	2172
		50-64	3.35 - 4.35	80-94	2.58 - 2.98	110+	1.80 - 2.43			
26-Mar-18	Embrun www.ontariosheep.org	0-50	2.70 - 3.96	65-79	2.60 - 3.25	95-109	1.96 - 2.52	Sheep	1.02 - 1.54	635
		50-64	2.60 - 3.70	80-94	2.40 - 2.85	110+	1.55 - 2.10			
22-Mar-18	Brussels www.ontariosheep.org	0-50	2.90 - 3.96	65-79	3.05 - 3.80	95-109	2.35 - 2.98	Sheep	1.09 - 1.47	1192
		50-64	3.60 - 4.17	80-94	2.60 - 3.23	110+	1.67 - 2.26			

Alberta Lamb Producers does not endorse individual markets or verify prices provided.

Trends* in auction price for heavy lambs in Alberta



*Due to differences among auctions, prices are reported as 'trends' rather than averages. This graph is updated on weeks with two or more markets reporting prices.