

**Alberta Live Animal Markets: Visit individual market websites for more information about applicable auction fees and upcoming sales**

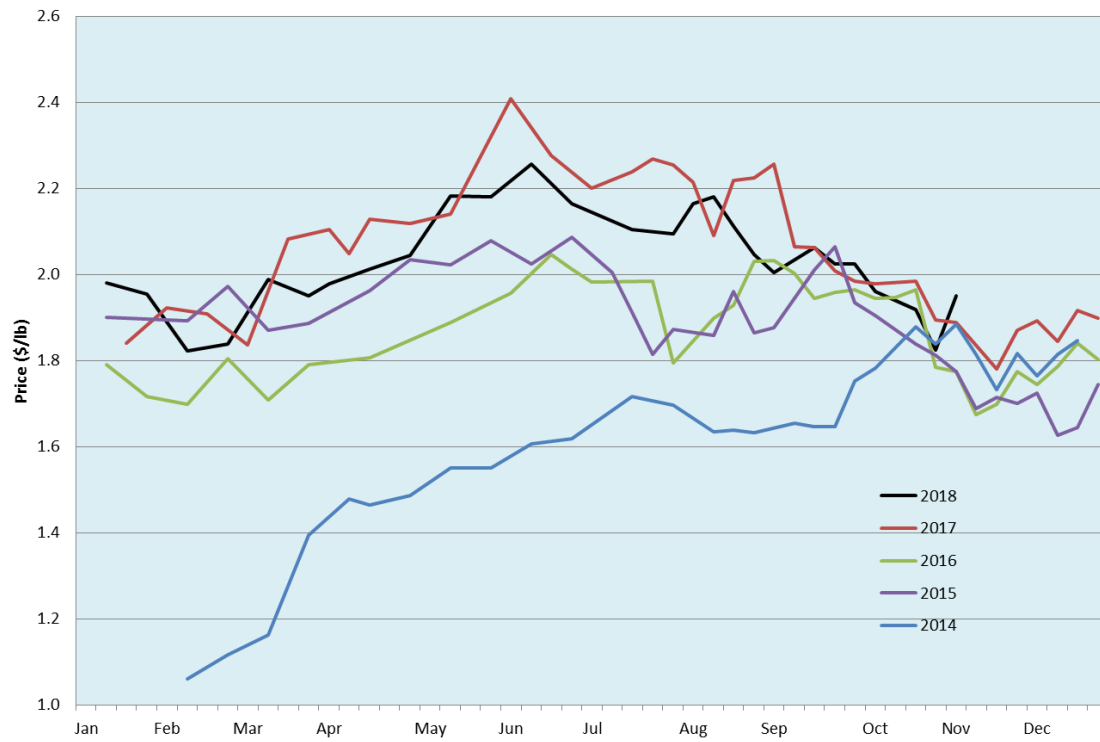
| Date              | Sale  | Lambs (\$/lb) |             | Lambs (\$/lb) |             | Lambs (\$/lb) |             | Sheep(\$/lb): Bred ewes \$/hd |               | Head                               |           |
|-------------------|---|---------------|-------------|---------------|-------------|---------------|-------------|-------------------------------|---------------|------------------------------------|-----------|
|                   |   | Weight (lbs)  | low - high  | Weight (lbs)  | low - high  | Weight (lbs)  | low - high  |                               | low - high    |                                    |           |
| 29-Oct-18         | Beaver Hill<br><a href="http://www.beaverhillauctions.com">www.beaverhillauctions.com</a>   | 0-54: wool    | 1.90 - 2.20 | 70-85: wool   | 1.80 - 2.03 | 86-105:wool   | 1.81 - 2.00 | Ewes: wool                    | 0.92 - 1.38   | 1040                               |           |
|                   |   | 0-54: hair    | 1.69 - 1.94 |               |             | 86-105:hair   | 1.60 - 1.82 | Ewes: hair                    | 0.82 - 1.45   |                                    |           |
|                   |   | 55-69: wool   | 1.90 - 2.23 | 70-85: hair   | 1.65 - 1.87 | 106+:wool     | 1.77 - 1.91 | Rams: wool                    | 0.88 - 1.36   |                                    |           |
|                   |   | 55-69: hair   | 1.65 - 1.92 |               |             | 106+:hair     | 1.60 - 1.82 | Rams: hair                    | 0.87 - 128.00 |                                    | Bred Ewes |
| No sale this week | VJV Westlock<br><a href="http://www.vjvauction.com">www.vjvauction.com</a>                  | 0-69: wool    | - - -       | 70-85: wool   | - - -       | 86-105: wool  | - - -       | Ewes: wool                    | - - -         |                                    | -         |
|                   |   |               |             |               |             | 86-105: hair  | - - -       | Ewes: hair                    | - - -         |                                    |           |
|                   |   | 0-69: hair    | - - -       | 70-85: hair   | - - -       | 106+: wool    | - - -       | Rams: wool                    | - - -         |                                    |           |
|                   |   |               |             |               |             | 106+: hair    | - - -       | Rams: hair                    | - - -         | Bred Ewes:wool                     |           |
| 30-Oct-18         | Olds Auction<br><a href="http://www.oldsaction.com">www.oldsaction.com</a>                  | 30-50         | 1.50 - 1.95 | 70-80         | 1.80 - 2.10 | 90-100        | 1.85 - 2.10 | Ewes                          | 0.70 - 1.00   | 412<br><small>(incl.goats)</small> |           |
|                   |   | 50-60         | 1.80 - 1.95 | 80-90         | 1.85 - 2.10 | 100-110       | 1.85 - 2.10 | Rams                          | 0.75 - 1.00   |                                    |           |
|                   |   | 60-70         | 1.80 - 1.95 |               |             | 110+          | 1.85 - 2.10 | Bred Ewes                     | - - -         |                                    |           |
| 27-Oct-18         | Picture Butte<br><a href="http://www.picturebutteauction.ca">www.picturebutteauction.ca</a> |               |             |               |             | Feeder        | 2.08 - 2.21 | Slaughter Ewes                | 0.98 - 1.10   | -                                  |           |
|                   |   |               |             |               |             | Slaughter     | 1.98 - 2.08 | Feeder Ewes                   | 1.06 - 1.11   |                                    |           |
|                   |   |               |             |               |             |               |             | Ewe&lamb(s)                   | - - -         |                                    |           |
|                   |   |               |             |               |             |               |             | Bred ewes                     | - - -         |                                    | Rams      |

**Ontario Live Animal Markets**

|           |   |       |             |       |             |        |             |         |             |      |
|-----------|---|-------|-------------|-------|-------------|--------|-------------|---------|-------------|------|
| 29-Oct-18 | OSI<br><a href="http://www.ontariostockyards.on.ca">www.ontariostockyards.on.ca</a> | 0-65  | 2.10 - 2.50 | 65-80 | 2.15 - 2.57 | 95-110 | 2.10 - 2.30 | Sheep   | 1.20 - 1.40 | 961  |
|           |   |       |             | 80-95 | 2.15 - 2.40 | 110+   | 1.88 - 2.10 | Thinner | 1.25 - 1.60 |      |
|           |   |       |             |       |             | Feeder | 1.00 - 2.00 | Rams    | 1.20 - 1.50 |      |
| 30-Oct-18 | OLEX<br><a href="http://www.ontariosheep.org">www.ontariosheep.org</a>              | 0-50  | 1.50 - 2.38 | 65-79 | 1.85 - 2.43 | 95-109 | 1.80 - 2.10 | Sheep   | 1.30 - 1.63 | 1534 |
|           |   | 50-64 | 1.75 - 2.65 | 80-94 | 1.85 - 2.10 | 110+   | 1.63 - 2.00 |         |             |      |
| 29-Oct-18 | Embrun<br><a href="http://www.ontariosheep.org">www.ontariosheep.org</a>            | 0-50  | 2.17 - 2.17 | 65-79 | 2.06 - 2.30 | 95-109 | 1.77 - 2.12 | Sheep   | 1.22 - 1.55 | 391  |
|           |   | 50-64 | 1.90 - 2.25 | 80-94 | 1.98 - 2.32 | 110+   | 1.90 - 2.07 |         |             |      |
| 25-Oct-18 | Brussels<br><a href="http://www.ontariosheep.org">www.ontariosheep.org</a>          | 0-50  | - - -       | 65-79 | 2.32 - 2.90 | 95-109 | 2.18 - 2.32 | Sheep   | 1.05 - 1.50 | 219  |
|           |   | 50-64 | 2.25 - 2.37 | 80-94 | 1.82 - 2.30 | 110+   | 1.90 - 2.22 |         |             |      |

Alberta Lamb Producers does not endorse individual markets or verify prices provided.

### Trends\* in auction price for heavy lambs in Alberta



\*Due to differences among auctions, prices are reported as 'trends' rather than averages.  
This graph is updated on weeks with two or more markets reporting prices.