

Alberta Live Animal Markets: Visit individual market websites for more information about applicable auction fees and upcoming sales

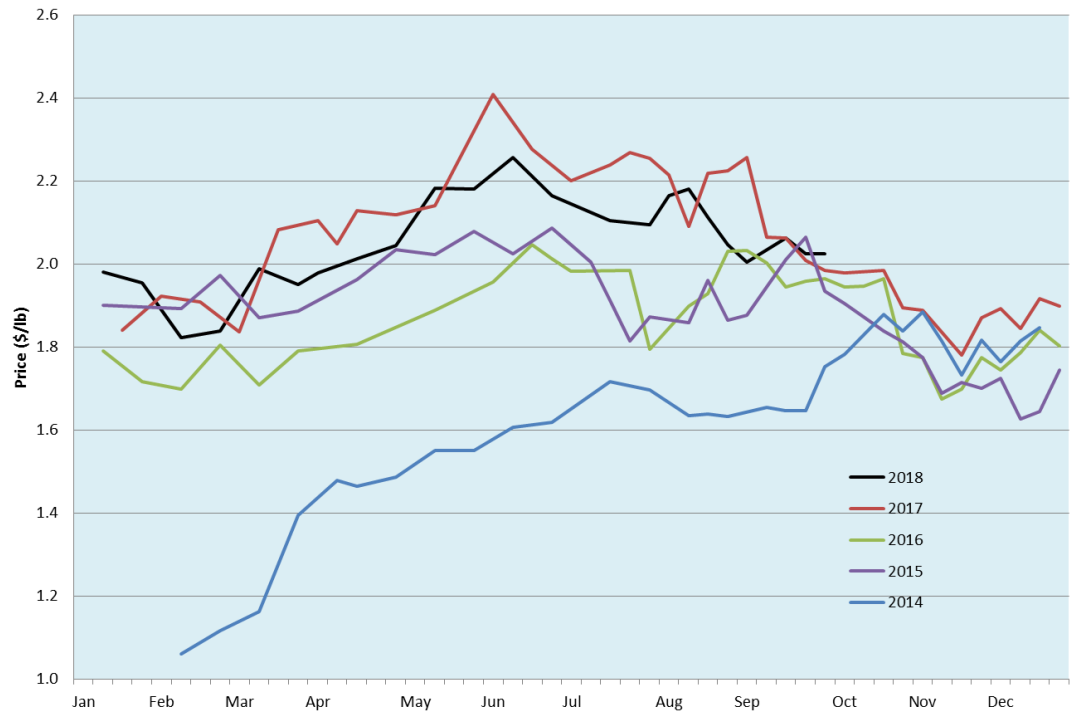
Date	Sale	Lambs (\$/lb)		Lambs (\$/lb)		Lambs (\$/lb)		Sheep(\$/lb): Bred ewes \$/hd		Head	
		Weight (lbs)	low - high	Weight (lbs)	low - high	Weight (lbs)	low - high		low - high		
24-Sep-18	Beaver Hill www.beaverhillauctions.com	0-54: wool	1.85 - 2.25	70-85: wool	1.90 - 2.12	86-105:wool	1.90 - 2.08	Ewes: wool	0.85 - 1.35	1260	
		0-54: hair	1.55 - 1.85			86-105:hair	1.80 - 1.96	Ewes: hair	0.75 - 1.36		
		55-69: wool	2.00 - 2.23	70-85: hair	1.71 - 2.00	106+:wool	1.90 - 2.07	Rams: wool	0.75 - 1.26		
		55-69: hair	1.73 - 1.95			106+:hair	1.75 - 1.92	Rams: hair	0.80 - 1.45		
						Bred Ewes	165 - 240				
						Ewe&Lamb(s)	- - -				
No sale this week	VJV Westlock www.vjvauction.com	0-69: wool	- - -	70-85: wool	- - -	86-105: wool	- - -	Ewes: wool	- - -	-	
						86-105: hair	- - -	Ewes: hair	- - -		
		0-69: hair	- - -	70-85: hair	- - -	106+: wool	- - -	Rams: wool	- - -		
						106+: hair	- - -	Rams:hair	- - -		
						Bred Ewes:wool	- - -				
						Ewe&Lamb:hair	- - -				
25-Sep-18	Olds Auction www.oldsauction.com	30-50	1.10 - 1.50	70-80	1.75 - 2.10	90-100	1.75 - 2.10	Ewes	0.70 - 1.10	386	
		50-60	1.75 - 2.10	80-90	1.75 - 2.10	100-110	1.85 - 2.20	Rams	0.75 - 1.10		
		60-70	1.75 - 2.10			110+	1.85 - 2.20	Bred Ewes	- - -		
22-Sep-18	Picture Butte www.picturebutteauction.ca					Feeder	1.96 - 2.15	Slaughter Ewes	0.95 - 1.10	-	
						Slaughter	2.04 - 2.10	Feeder Ewes	- - -		
								Ewe&lamb(s)	- - -		
								Bred ewes	- - -		
								Rams	- - -		

Ontario Live Animal Markets

24-Sep-18	OSI www.ontariostockyards.on.ca	0-65	2.12 - 2.40	65-80	2.00 - 2.34	95-110	2.07 - 2.26	Sheep	1.10 - 1.25	1130
				80-95	1.95 - 2.27	110+	2.00 - 2.20	Thinner	1.15 - 1.35	
						Feeder	1.50 - 2.00	Rams	1.20 - 1.40	
25-Sep-18	OLEX www.ontariosheep.org	0-50	2.20 - 2.82	65-79	2.00 - 2.44	95-109	2.32 - 2.49	Sheep	1.05 - 1.45	1485
		50-64	2.00 - 2.55	80-94	2.08 - 2.39	110+	2.20 - 2.40			
24-Sep-18	Embrun www.ontariosheep.org	0-50	- - -	65-79	2.20 - 2.70	95-109	1.86 - 2.18	Sheep	1.12 - 1.36	364
		50-64	2.00 - 2.40	80-94	1.92 - 2.37	110+	1.65 - 1.65			
20-Sep-18	Brussels www.ontariosheep.org	0-50	1.90 - 2.05	65-79	2.14 - 2.42	95-109	2.08 - 2.21	Sheep	0.80 - 1.55	699
		50-64	2.17 - 2.32	80-94	2.08 - 2.36	110+	2.07 - 2.19			

Alberta Lamb Producers does not endorse individual markets or verify prices provided.

Trends* in auction price for heavy lambs in Alberta



*Due to differences among auctions, prices are reported as 'trends' rather than averages.
This graph is updated on weeks with two or more markets reporting prices.