

Alberta Live Animal Markets: Visit individual market websites for more information about applicable auction fees and upcoming sales

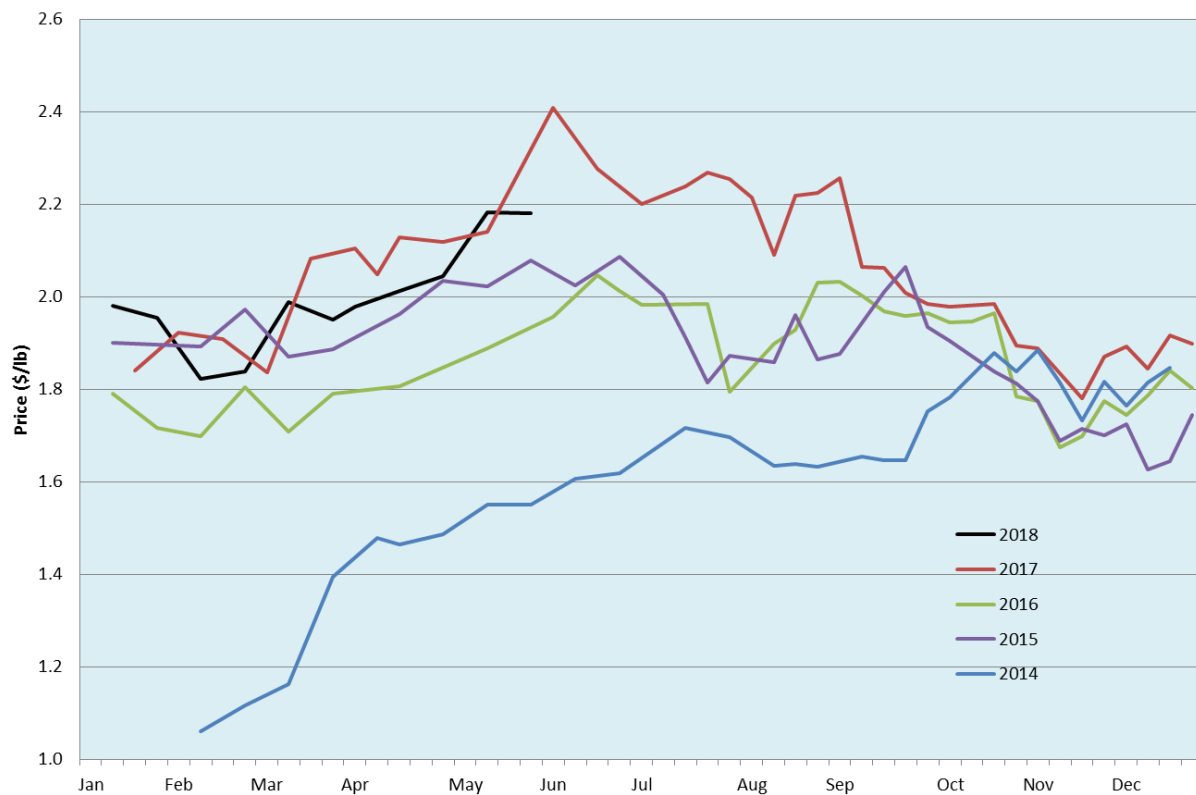
Date	Sale	Lambs (\$/lb)		Lambs (\$/lb)		Lambs (\$/lb)		Sheep(\$/lb): Bred ewes \$/hd		Head
		Weight (lbs)	low - high	Weight (lbs)	low - high	Weight (lbs)	low - high		low - high	
22-May-18	Beaver Hill www.beaverhillauctions.com	0-54: wool	2.50 - 5.00	70-85: wool	2.35 - 2.76	86-105:wool	2.25 - 2.55	Ewes: wool	1.00 - 2.00	1439
		0-54: hair	2.40 - 2.80			86-105:hair	2.20 - 2.50	Ewes: hair	1.00 - 1.80	
		55-69: wool	2.44 - 3.00	70-85: hair	2.20 - 2.65	106+:wool	2.20 - 2.40	Rams: wool	0.90 - 1.62	
		55-69: hair	2.40 - 2.70			106+:hair	2.10 - 2.30	Rams: hair	0.98 - 1.25	
						Bred Ewes	225 - 360			
						Ewe&Lamb(s)	240 - 375			
No sale this week	VJV Westlock www.vjvauction.com	0-69: wool	- - -	70-85: wool	- - -	86-105: wool	- - -	Ewes: wool	- - -	-
						86-105: hair	- - -	Ewes: hair	- - -	
		0-69: hair	- - -	70-85: hair	- - -	106+: wool	- - -	Rams: wool	- - -	
						106+: hair	- - -	Rams:hair	- - -	
						Bred Ewes:wool	- - -			
						Ewe&Lamb:hair	- - -			
22-May-18	Olds Auction www.oldsaction.com	30-50	2.70 - 3.10	70-80	2.60 - 2.90	90-100	2.30 - 2.50	Ewes	1.00 - 1.35	322
		50-60	2.60 - 3.00	80-90	2.50 - 2.80	100-110	2.20 - 2.40	Rams	0.90 - 1.25	
		60-70	2.60 - 2.90			110+	2.00 - 2.20	Bred Ewes	- - -	
19-May-18	Picture Butte www.picturebutteauction.ca					Feeder	2.34 - 2.58	Slaughter Ewes	0.98 - 1.24	-
						Slaughter	2.09 - 2.18	Feeder Ewes	- - -	
								Ewe&lamb(s)	- - -	
								Bred ewes	- - -	
								Rams	- - -	

Ontario Live Animal Markets

22-May-18	OSI www.ontariostockyards.on.ca	0-65	3.23 - 3.43	65-80	3.15 - 3.40	95-110	3.05 - 3.34	Sheep	1.10 - 1.30	613
				80-95	3.15 - 3.40	110+	2.20 - 3.10	Thinner	1.20 - 1.50	
						Feeder	2.70 - 3.40	Rams	1.10 - 1.40	
22-May-18	OLEX www.ontariosheep.org	0-50	2.00 - 3.78	65-79	3.10 - 3.41	95-109	3.10 - 3.28	Sheep	0.93 - 1.45	1468
		50-64	3.30 - 3.65	80-94	3.03 - 3.41	110+	2.60 - 2.80			
21-May-18	Embrun www.ontariosheep.org	0-50	3.15 - 3.70	65-79	3.32 - 3.50	95-109	2.90 - 3.45	Sheep	1.20 - 1.70	351
		50-64	3.15 - 3.40	80-94	3.27 - 3.50	110+	2.95 - 3.24			
17-May-18	Brussels www.ontariosheep.org	0-50	3.15 - 3.45	65-79	3.02 - 3.23	95-109	3.30 - 3.44	Sheep	1.07 - 1.80	693
		50-64	3.15 - 3.52	80-94	3.05 - 3.38	110+	3.20 - 3.21			

Alberta Lamb Producers does not endorse individual markets or verify prices provided.

Trends* in auction price for heavy lambs in Alberta



*Due to differences among auctions, prices are reported as 'trends' rather than averages.
This graph is updated on weeks with two or more markets reporting prices.