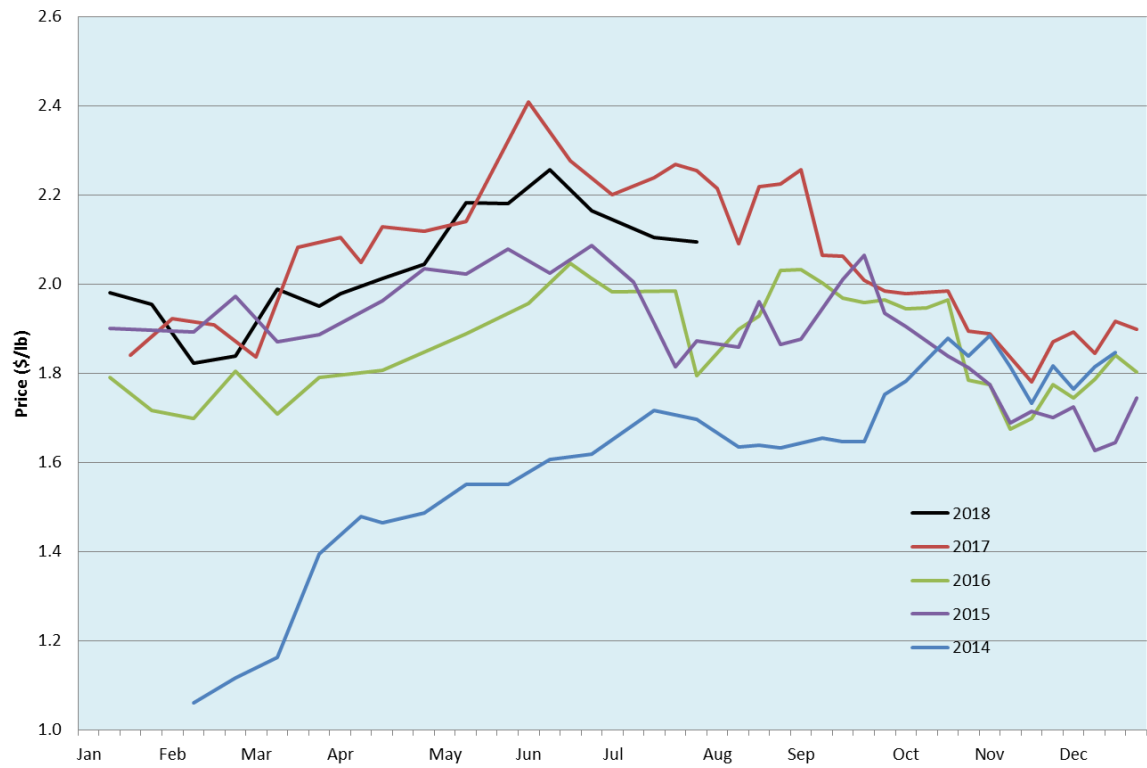


Alberta Live Animal Markets: Visit individual market websites for more information about applicable auction fees and upcoming sales										
Date	Sale	Lambs (\$/lb)		Lambs (\$/lb)		Lambs (\$/lb)		Sheep(\$/lb): Bred ewes \$/hd		Head
		Weight (lbs)	low - high	Weight (lbs)	low - high	Weight (lbs)	low - high		low - high	
23-Jul-18	Beaver Hill www.beaverhillauctions.com	0-54: wool	2.05 - 2.50	70-85: wool	2.20 - 2.49	86-105:wool	2.20 - 2.40	Ewes: wool	0.95 - 1.51	1159
		0-54: hair	2.00 - 2.30			86-105:hair	2.20 - 2.35	Ewes: hair	0.90 - 1.25	
		55-69: wool	2.20 - 2.50	70-85: hair	2.20 - 2.45	106+:wool	2.15 - 2.30	Rams: wool	1.06 - 1.25	
		55-69: hair	2.20 - 2.50			106+:hair	2.00 - 2.18	Rams: hair	1.17 - 1.45	
						Bred Ewes	- - -			
						Ewe&Lamb(s)	170 - 240			
No sale this week	VJV Westlock www.vjvauction.com	0-69: wool	- - -	70-85: wool	- - -	86-105: wool	- - -	Ewes: wool	- - -	-
						86-105: hair	- - -	Ewes: hair	- - -	
		0-69: hair	- - -	70-85: hair	- - -	106+: wool	- - -	Rams: wool	- - -	
						106+: hair	- - -	Rams:hair	- - -	
						Bred Ewes:wool	- - -			
						Ewe&Lamb:hair	- - -			
24-Jul-18	Olds Auction www.oldsauction.com	30-50	2.25 - 2.40	70-80	2.10 - 2.30	90-100	2.10 - 2.20	Ewes	0.80 - 1.10	359 (incl.goats)
		50-60	2.25 - 2.40	80-90	2.10 - 2.20	100-110	2.10 - 2.20	Rams	0.85 - 1.00	
		60-70	2.25 - 2.30			110+	2.00 - 2.20	Bred Ewes	- - -	
Not Available	Picture Butte www.picturebutteauction.ca					Feeder	- - -	Slaughter Ewes	- - -	-
						Slaughter	- - -	Feeder Ewes	- - -	
								Ewe&lamb(s)	- - -	
								Bred ewes	- - -	
								Rams	- - -	
Ontario Live Animal Markets										
23-Jul-18	OSI www.ontariostockyards.on.ca	0-65	2.35 - 2.95	65-80	2.60 - 2.89	95-110	2.48 - 2.70	Sheep	1.20 - 1.50	956
				80-95	2.63 - 2.90	110+	2.60 - 2.69	Thinner	1.30 - 1.50	
						Feeder	2.20 - 2.40	Rams	1.50 - 1.80	
24-Jul-18	OLEX www.ontariosheep.org	0-50	2.73 - 3.15	65-79	2.95 - 3.43	95-109	2.60 - 2.90	Sheep	1.10 - 1.45	1855
		50-64	2.70 - 3.30	80-94	2.70 - 3.00	110+	2.40 - 2.60			
23-Jul-18	Embrun www.ontariosheep.org	0-50	1.25 - 2.35	65-79	2.35 - 2.70	95-109	2.30 - 2.52	Sheep	1.16 - 1.52	634
		50-64	1.95 - 2.85	80-94	2.35 - 2.62	110+	2.40 - 2.55			
19-Jul-18	Brussels www.ontariosheep.org	0-50	2.70 - 2.90	65-79	2.51 - 2.75	95-109	2.47 - 2.62	Sheep	1.15 - 1.50	566
		50-64	2.85 - 3.00	80-94	2.32 - 2.85	110+	2.35 - 2.57			
Alberta Lamb Producers does not endorse individual markets or verify prices provided.										

Trends* in auction price for heavy lambs in Alberta



*Due to differences among auctions, prices are reported as 'trends' rather than averages.
This graph is updated on weeks with two or more markets reporting prices.