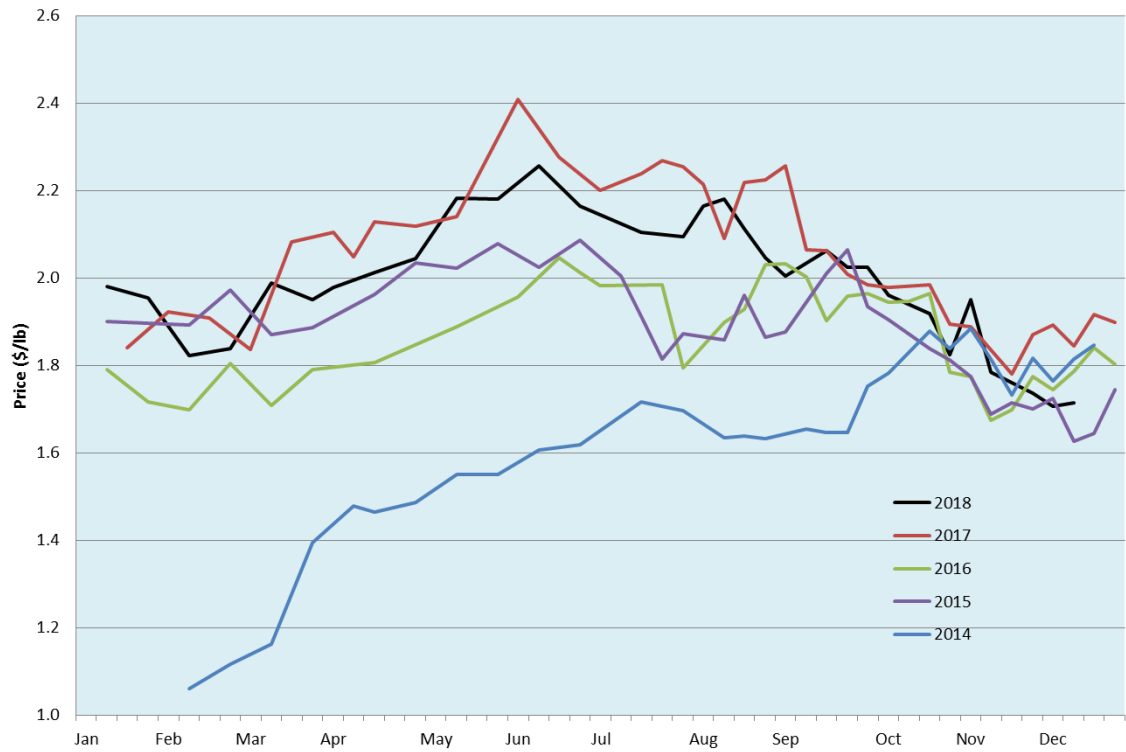


Alberta Live Animal Markets: Visit individual market websites for more information about applicable auction fees and upcoming sales										
Date	Sale	Lambs (\$/lb)		Lambs (\$/lb)		Lambs (\$/lb)		Sheep(\$/lb): Bred ewes \$/hd		Head
		Weight (lbs)	low - high	Weight (lbs)	low - high	Weight (lbs)	low - high		low - high	
3-Dec-18	Beaver Hill www.beaverhillauctions.com	0-54: wool	1.65 - 1.90	70-85: wool	1.80 - 1.94	86-105:wool	1.80 - 0.95	Ewes: wool	0.85 - 1.36	202
		0-54: hair	1.50 - 1.75			86-105:hair	1.70 - 1.85	Ewes: hair	0.94 - 1.18	
		55-69: wool	1.80 - 1.90	70-85: hair	1.70 - 1.80	106+:wool	1.63 - 1.77	Rams: wool	0.91 - 1.17	
		55-69: hair	1.70 - 1.82			106+:hair	1.60 - 1.70	Rams: hair	0.92 - 1.10	
						Bred Ewes	200 - 240			
						Ewe&Lamb(s)	- - -			
4-Dec-18	VJV Westlock www.vjvauction.com	0-69: wool	1.38 - 1.75	70-85: wool	1.48 - 1.72	86-105: wool	1.70 - 1.64	Ewes: wool	0.80 - 1.04	153
						86-105: hair	- - -	Ewes: hair	0.81 - 1.08	
		0-69: hair	- - -	70-85: hair	- - -	106+: wool	1.62 - 1.53	Rams: wool	0.80 - 1.20	
						106+: hair	1.20 - 1.30	Rams: hair	1.11 - 1.11	
						Bred Ewes:wool	160 - 200			
						Ewe&Lamb:hair	- - -			
4-Dec-18	Olds Auction www.oldsauction.com	30-50	1.50 - 1.75	70-80	1.60 - 1.85	90-100	1.60 - 1.85	Ewes	1.00 - 1.10	317
		50-60	1.50 - 1.75	80-90	1.60 - 1.85	100-110	1.60 - 1.85	Rams	1.10 - 1.20	
		60-70	1.50 - 1.75			110+	1.60 - 1.85	Bred Ewes	- - -	
Not Available	Picture Butte www.picturebutteauction.ca					Feeder	- - -	Slaughter Ewes	- - -	-
						Slaughter	- - -	Feeder Ewes	- - -	
								Ewe&lamb(s)	- - -	
								Bred ewes	- - -	
								Rams	- - -	
Ontario Live Animal Markets										
3-Dec-18	OSI www.ontariostockyards.on.ca	0-65	2.55 - 2.98	65-80	1.75 - 2.50	95-110	1.53 - 1.74	Sheep	1.20 - 1.50	2630
				80-95	1.62 - 1.90	110+	1.49 - 1.63	Thinner	1.30 - 1.70	
						Feeder	1.50 - 2.00	Rams	1.20 - 1.60	
4-Dec-18	OLEX www.ontariosheep.org	0-50	2.70 - 3.40	65-79	2.15 - 2.73	95-109	1.75 - 1.93	Sheep	1.20 - 1.66	1541
		50-64	2.45 - 3.10	80-94	1.85 - 2.33	110+	1.53 - 1.70			
3-Dec-18	Embrun www.ontariosheep.org	0-50	1.75 - 2.65	65-79	2.34 - 2.55	95-109	1.69 - 1.87	Sheep	1.46 - 1.65	451
		50-64	2.28 - 2.65	80-94	1.84 - 2.35	110+	1.70 - 2.05			
29-Nov-18	Brussels www.ontariosheep.org	0-50	2.75 - 2.82	65-79	2.21 - 2.81	95-109	1.84 - 2.08	Sheep	1.20 - 1.62	582
		50-64	2.70 - 3.40	80-94	1.90 - 2.22	110+	1.72 - 1.97			
Alberta Lamb Producers does not endorse individual markets or verify prices provided.										

Trends* in auction price for heavy lambs in Alberta



*Due to differences among auctions, prices are reported as 'trends' rather than averages.
 This graph is updated on weeks with two or more markets reporting prices.