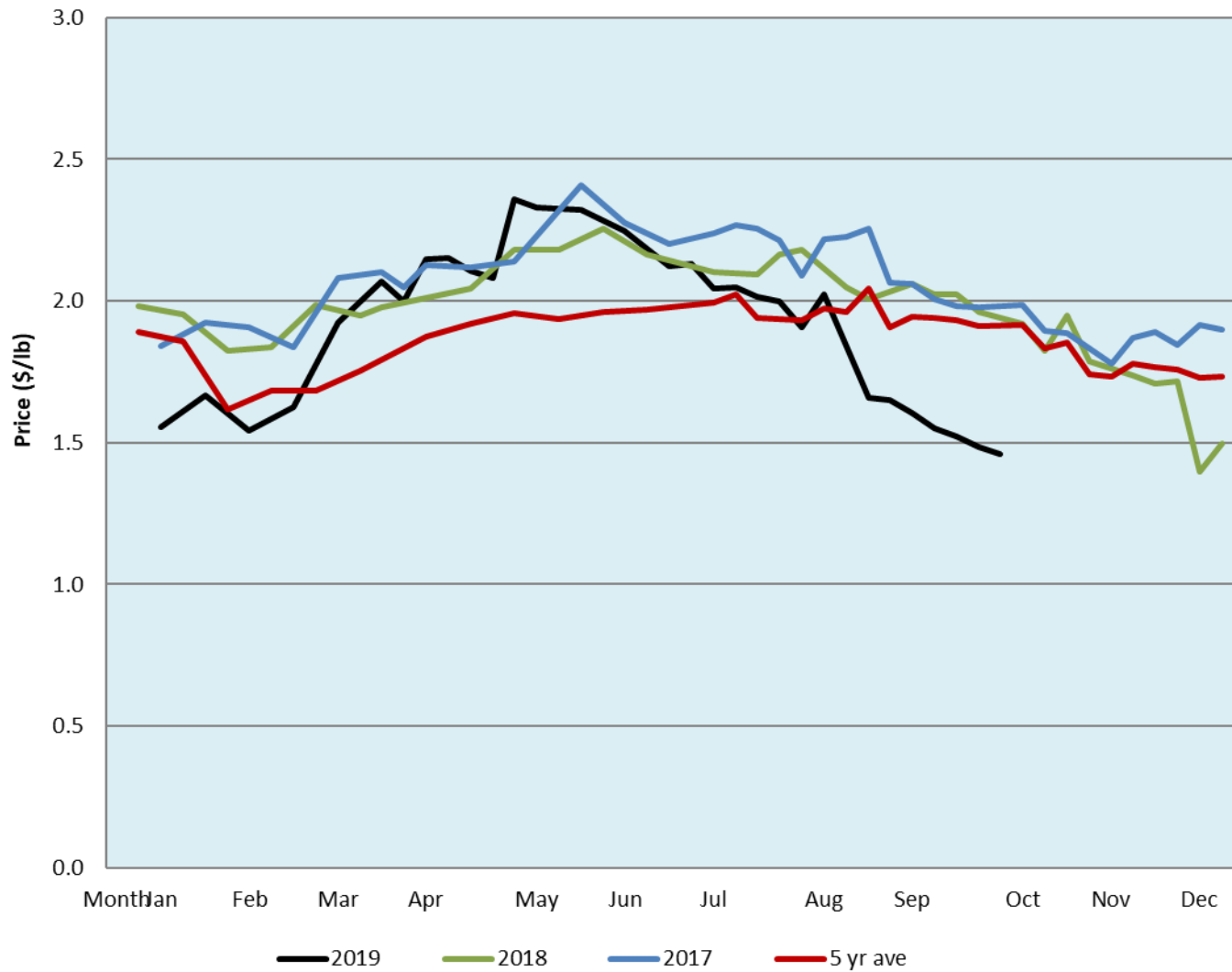


Alberta Live Animal Markets: Visit individual market websites for more information about applicable auction fees and upcoming sales										
Date	Sale	Lambs (\$/lb)		Lambs (\$/lb)		Lambs (\$/lb)		Sheep(\$/lb): Bred ewes \$/hd		Head
		Weight (lbs)	low - high	Weight (lbs)	low - high	Weight (lbs)	low - high		low - high	
7-Oct-19	Beaver Hill www.beaverhillauctions.com	0-54: wool	1.40 - 1.70	70-85: wool	1.45 - 1.79	86-105:wool	1.42 - 1.66	Ewes: wool	0.95 - 1.66	1533
		0-54: hair	1.10 - 1.35			86-105:hair	1.30 - 1.50	Ewes: hair	0.91 - 1.50	
		55-69: wool	1.55 - 1.79	70-85: hair	1.38 - 1.55	106+:wool	1.37 - 1.52	Rams: wool	0.87 - 1.10	
		55-69: hair	1.22 - 1.36			Bred Ewes	180 - 225			
						106+:hair	1.35 - 1.45	Ewe&Lamb(s)	- - -	
No sale this week	VJV Westlock www.vjvauction.com	0-69: wool	- - -	70-85: wool	- - -	86-105: wool	- - -	Ewes: wool	- - -	470
						86-105: hair	- - -	Ewes: hair	- - -	
		0-69: hair	- - -	70-85: hair	- - -	106+: wool	- - -	Rams: wool	- - -	
						Bred Ewes:wool	- - -	Rams: hair	- - -	
						106+: hair	- - -	Ewe&Lamb:hair	- - -	
8-Oct-19	Olds Auction www.oldsauction.com	30-50	1.30 - 1.50	70-80	1.45 - 1.60	90-100	1.20 - 1.40	Ewes	0.85 - 1.20	201 (incl.goats)
		50-60	1.45 - 1.60	80-90	1.30 - 1.50	100-110	1.35 - 1.50	Rams	1.00 - 1.20	
		60-70	1.55 - 1.65			110+	1.35 - 1.50	Bred Ewes	- - -	
5-Oct-19	Picture Butte www.picturebutteauction.ca					Feeder	1.40 - 1.60	Slaughter Ewes	- - -	-
						Slaughter	1.48 - 1.54	Feeder Ewes	- - -	
								Ewe&lamb(s)	- - -	
								Bred ewes	- - -	
								Rams	- - -	
Ontario Live Animal Markets										
7-Oct-19	OSI www.ontariosheep.org	0-50	0.50 - 2.08	65-80	1.70 - 2.25	95-110	1.82 - 1.97	Sheep	1.00 - 1.45	1730
		50-64	1.83 - 2.48	80-95	1.68 - 2.20	110+	1.68 - 1.90			
8-Oct-19	OLEX www.ontariosheep.org	0-50	2.38 - 2.55	65-79	1.78 - 2.23	95-109	1.95 - 2.17	Sheep	1.25 - 1.48	2305
		50-64	2.15 - 2.70	80-94	1.83 - 2.15	110+	1.80 - 2.00			
7-Oct-19	Embrun www.ontariosheep.org	0-50	2.17 - 2.38	65-79	1.80 - 2.20	95-109	1.60 - 1.95	Sheep	1.04 - 1.35	474
		50-64	2.00 - 2.27	80-94	1.60 - 1.85	110+	1.54 - 1.85			
3-Oct-19	Brussels www.ontariosheep.org	0-50	2.04 - 2.20	65-79	1.77 - 2.22	95-109	1.80 - 1.96	Sheep	0.92 - 1.37	513
		50-64	1.87 - 2.27	80-94	1.66 - 1.88	110+	1.69 - 1.85			
Alberta Lamb Producers does not endorse individual markets or verify prices provided.										

Trends* in auction price for heavy lambs in Alberta



*Due to differences among auctions, prices are reported as 'trends' rather than averages. This graph is updated on weeks with two or more markets reporting prices.