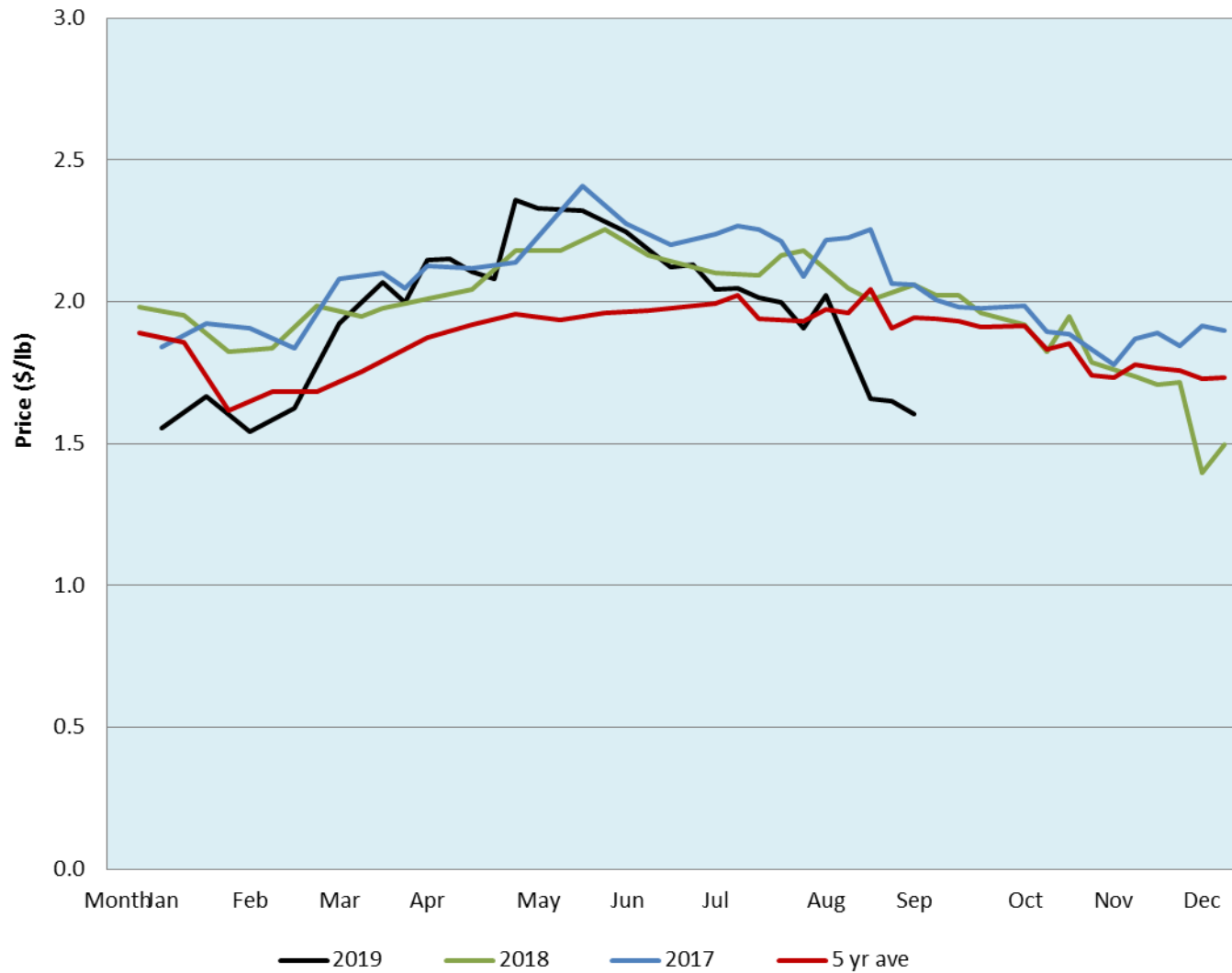


Alberta Live Animal Markets: Visit individual market websites for more information about applicable auction fees and upcoming sales										
Date	Sale	Lambs (\$/lb)		Lambs (\$/lb)		Lambs (\$/lb)		Sheep(\$/lb): Bred ewes \$/hd		Head
		Weight (lbs)	low - high	Weight (lbs)	low - high	Weight (lbs)	low - high		low - high	
9-Sep-19	Beaver Hill www.beaverhillauctions.com	0-54: wool	1.45 - 1.72	70-85: wool	1.49 - 1.75	86-105:wool	1.49 - 1.85	Ewes: wool	0.95 - 1.67	1299
		0-54: hair	1.25 - 1.45			86-105:hair	1.40 - 1.55	Ewes: hair	0.90 - 1.40	
		55-69: wool	1.47 - 1.75	70-85: hair	1.40 - 1.58	106+:wool	1.54 - 1.68	Rams: wool	0.90 - 1.30	
		55-69: hair	1.40 - 1.63			Bred Ewes	170 - 215			
						106+:hair	1.47 - 1.59	Ewe&Lamb(s)	- - -	
No sale this week	VJV Westlock www.vjvauction.com	0-69: wool	- - -	70-85: wool	- - -	86-105: wool	- - -	Ewes: wool	- - -	302
						86-105: hair	- - -	Ewes: hair	- - -	
		0-69: hair	- - -	70-85: hair	- - -	106+: wool	- - -	Rams: wool	- - -	
						106+: hair	- - -	Rams: hair	- - -	
								Bred Ewes:wool	- - -	
10-Sep-19	Olds Auction www.oldsauction.com	30-50	0.90 - 2.10	70-80	1.50 - 2.00	90-100	1.40 - 1.70	Ewes	0.90 - 1.30	563 <small>(incl.goats)</small>
		50-60	1.20 - 2.00	80-90	1.40 - 1.70	100-110	1.40 - 1.80	Rams	1.10 - 2.00	
		60-70	1.50 - 2.00			110+	1.40 - 1.80	Bred Ewes	200 - 300	
7-Sep-19	Picture Butte www.picturebutteauction.ca					Feeder	1.47 - 1.54	Slaughter Ewes	0.92 - 1.05	-
						Slaughter	1.57 - 1.63	Feeder Ewes	1.00 - 1.10	
								Ewe&lamb(s)	- - -	
								Bred ewes	- - -	
								Rams	- - -	
Ontario Live Animal Markets										
9-Sep-19	OSI www.ontariosheep.org	0-50	1.40 - 1.90	65-80	1.75 - 2.30	95-110	1.83 - 2.08	Sheep	1.25 - 1.58	1640
		50-64	1.98 - 2.35	80-95	1.80 - 2.12	110+	1.75 - 2.05			
10-Sep-19	OLEX www.ontariosheep.org	0-50	2.20 - 2.75	65-79	1.94 - 2.25	95-109	1.84 - 2.05	Sheep	1.45 - 1.73	2540
		50-64	2.30 - 2.68	80-94	1.75 - 2.13	110+	1.70 - 2.11			
9-Sep-19	Embrun www.ontariosheep.org	0-50	1.00 - 2.10	65-79	1.85 - 2.40	95-109	1.55 - 2.15	Sheep	1.24 - 1.60	583
		50-64	1.85 - 2.25	80-94	1.70 - 2.25	110+	1.72 - 1.95			
5-Sep-19	Brussels www.ontariosheep.org	0-50	2.00 - 2.45	65-79	2.00 - 2.43	95-109	1.90 - 2.03	Sheep	1.35 - 1.85	337
		50-64	2.10 - 2.45	80-94	1.87 - 2.01	110+	1.90 - 1.97			
Alberta Lamb Producers does not endorse individual markets or verify prices provided.										

Trends* in auction price for heavy lambs in Alberta



*Due to differences among auctions, prices are reported as 'trends' rather than averages. This graph is updated on weeks with two or more markets reporting prices.