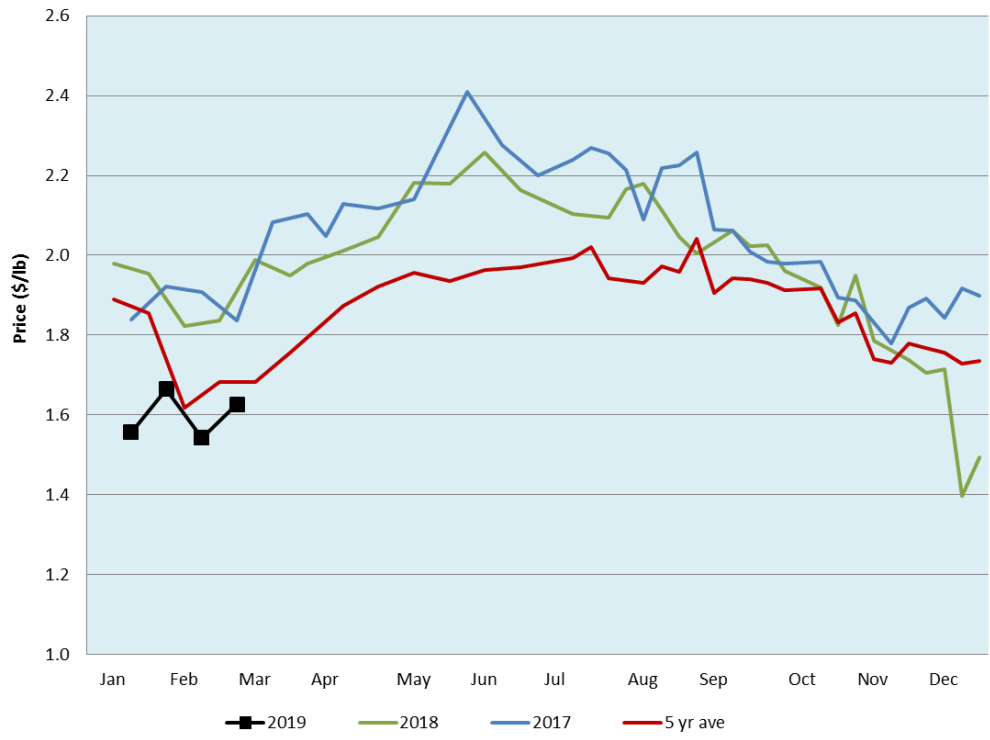


Alberta Live Animal Markets: Visit individual market websites for more information about applicable auction fees and upcoming sales										
Date	Sale	Lambs (\$/lb)		Lambs (\$/lb)		Lambs (\$/lb)		Sheep(\$/lb): Bred ewes \$/hd		Head
		Weight (lbs)	low - high	Weight (lbs)	low - high	Weight (lbs)	low - high		low - high	
25-Feb-19	Beaver Hill <a href="http://www.beaverhillauctions.com">www.beaverhillauctions.com</a>	0-54: wool	1.90 - 2.25	70-85: wool	2.26 - 2.50	86-105:wool	1.73 - 2.15	Ewes: wool	1.16 - 1.40	334
		0-54: hair	1.80 - 2.10			86-105:hair	1.70 - 2.05	Ewes: hair	1.10 - 1.40	
		55-69: wool	2.30 - 2.60	70-85: hair	2.20 - 2.48	106+:wool	1.71 - 1.89	Rams: wool	1.14 - 1.21	
		55-69: hair	2.20 - 2.50			Bred Ewes	200 - 260			
						106+:hair	1.60 - 1.77	Ewe&Lamb(s)	- - -	
19-Feb-19	VJV Westlock <a href="http://www.vjvauction.com">www.vjvauction.com</a>	0-69: wool	2.30 - 2.50	70-85: wool	2.10 - 2.30	86-105: wool	1.90 - 2.10	Ewes: wool	1.00 - 1.25	142
						86-105: hair	- - -	Ewes: hair	1.00 - 1.25	
		0-69: hair	2.00 - 2.20	70-85: hair	1.90 - 2.00	106+: wool	1.70 - 1.90	Rams: wool	0.90 - 1.35	
						106+: hair	- - -	Rams: hair	- - -	
								Bred Ewes:wool	- - -	
26-Feb-19	Olds Auction <a href="http://www.oldsauktion.com">www.oldsauktion.com</a>	30-50	1.50 - 2.10	70-80	1.80 - 2.10	90-100	1.60 - 1.90	Ewes	1.00 - 1.30	48 <small>(incl.goats)</small>
		50-60	1.50 - 2.20	80-90	1.70 - 1.90	100-110	1.40 - 1.50	Rams	0.90 - 1.20	
		60-70	2.00 - 2.30			110+	1.30 - 1.50	Bred Ewes	- - -	
23-Feb-19	Picture Butte <a href="http://www.picturebutteauction.ca">www.picturebutteauction.ca</a>					Feeder	1.97 - 1.97	Slaughter Ewes	0.75 - 1.08	-
						Slaughter	1.68 - 1.68	Feeder Ewes	- - -	
								Ewe&lamb(s)	- - -	
								Bred ewes	- - -	
								Rams	0.95 - 1.25	
Ontario Live Animal Markets										
25-Feb-19	OSI <a href="http://www.ontariosheep.org">www.ontariosheep.org</a>	0-65	N/A - N/A	65-80	3.28 - 3.30	95-110	2.30 - 2.39	Sheep	1.70 - 2.15	385
				80-95	2.53 - 3.10	110+	2.19 - 2.38	Thinner	- - -	
						Feeder	- - -	Rams	- - -	
26-Feb-19	OLEX <a href="http://www.ontariosheep.org">www.ontariosheep.org</a>	0-50	2.40 - 3.98	65-79	3.33 - 3.70	95-109	2.29 - 2.43	Sheep	1.30 - 1.80	794
		50-64	3.55 - 3.90	80-94	2.48 - 3.30	110+	1.95 - 2.32			
25-Feb-19	Embrun <a href="http://www.ontariosheep.org">www.ontariosheep.org</a>	0-50	2.80 - 2.90	65-79	3.45 - 3.60	95-109	3.00 - 3.35	Sheep	1.67 - 2.20	199
		50-64	3.15 - 3.30	80-94	2.55 - 3.55	110+	2.10 - 2.10			
21-Feb-19	Brussels <a href="http://www.ontariosheep.org">www.ontariosheep.org</a>	0-50	3.55 - 3.60	65-79	2.72 - 3.41	95-109	2.04 - 2.22	Sheep	1.40 - 1.75	322
		50-64	2.91 - 3.57	80-94	2.02 - 2.70	110+	1.80 - 2.05			
Alberta Lamb Producers does not endorse individual markets or verify prices provided.										

### Trends\* in auction price for heavy lambs in Alberta



\*Due to differences among auctions, prices are reported as 'trends' rather than averages.  
This graph is updated on weeks with two or more markets reporting prices.