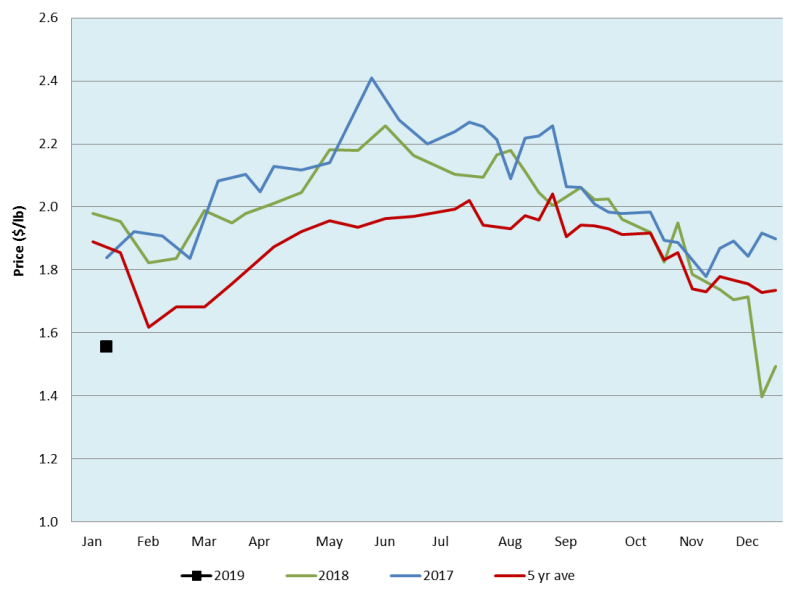


Alberta Live Animal Markets: Visit individual market websites for more information about applicable auction fees and upcoming sales										
Date	Sale	Lambs (\$/lb)		Lambs (\$/lb)		Lambs (\$/lb)		Sheep(\$/lb): Bred ewes \$/hd		Head
		Weight (lbs)	low - high	Weight (lbs)	low - high	Weight (lbs)	low - high		low - high	
No sale this week	Beaver Hill www.beaverhillauctions.com	0-54: wool	- - -	70-85: wool	- - -	86-105:wool	- - -	Ewes: wool	- - -	-
		0-54: hair	- - -			86-105:hair	- - -	Ewes: hair	- - -	
		55-69: wool	- - -	70-85: hair	- - -	106+:wool	- - -	Rams: wool	- - -	
		55-69: hair	- - -			Bred Ewes	- - -			
		106+:hair	- - -			Ewe&Lamb(s)	- - -			
No sale this week	VJV Westlock www.vjvauction.com	0-69: wool	- - -	70-85: wool	- - -	86-105: wool	- - -	Ewes: wool	- - -	-
						86-105: hair	- - -	Ewes: hair	- - -	
		0-69: hair	- - -	70-85: hair	- - -	106+: wool	- - -	Rams: wool	- - -	
						106+: hair	- - -	Rams: hair	- - -	
						Bred Ewes:wool	- - -			
						Ewe&Lamb:hair	- - -			
22-Jan-19	Olds Auction www.oldsauktion.com	30-50	2.00 - 2.10	70-80	1.80 - 2.10	90-100	1.60 - 1.90	Ewes	0.90 - 1.30	149 (incl.goats)
		50-60	2.00 - 2.20	80-90	1.70 - 1.90	100-110	1.40 - 1.50	Rams	0.90 - 1.20	
		60-70	2.00 - 2.30			110+	1.30 - 1.50	Bred Ewes	- - -	
19-Jan-19	Picture Butte www.picturebutteauction.ca					Feeder	1.80 - 1.98	Slaughter Ewes	0.90 - 0.97	-
						Slaughter	1.68 - 1.74	Feeder Ewes	0.95 - 1.05	
								Ewe&lamb(s)	- - -	
								Bred ewes	- - -	
							Rams	- - -		
Ontario Live Animal Markets										
21-Jan-19	OSI www.ontariostockyards.on.ca	0-65	2.28 - 3.37	65-80	2.95 - 3.50	95-110	2.05 - 2.14	Sheep	1.30 - 1.60	695
				80-95	2.35 - 2.88	110+	1.78 - 1.94	Thinner	1.40 - 1.70	
						Feeder	2.50 - 3.00	Rams	1.40 - 1.70	
22-Jan-19	OLEX www.ontariosheep.org	0-50	3.15 - 3.55	65-79	2.80 - 3.43	95-109	1.88 - 2.18	Sheep	1.19 - 1.63	1345
		50-64	3.00 - 3.65	80-94	2.03 - 2.45	110+	1.89 - 2.03			
21-Jan-19	Embrun www.ontariosheep.org	0-50	- - -	65-79	2.85 - 3.50	95-109	2.25 - 2.92	Sheep	1.55 - 2.00	169
		50-64	3.00 - 3.20	80-94	3.00 - 3.35	110+	1.89 - 2.15			
17-Jan-19	Brussels www.ontariosheep.org	0-50	2.55 - 3.35	65-79	2.29 - 3.05	95-109	2.05 - 2.28	Sheep	1.22 - 1.59	270
		50-64	3.16 - 3.45	80-94	2.38 - 2.70	110+	1.72 - 1.75			
Alberta Lamb Producers does not endorse individual markets or verify prices provided.										

Trends* in auction price for heavy lambs in Alberta



*Due to differences among auctions, prices are reported as 'trends' rather than averages. This graph is updated on weeks with two or more markets reporting prices.