

Alberta Live Animal Markets: Visit individual market websites for more information about applicable auction fees and upcoming sales

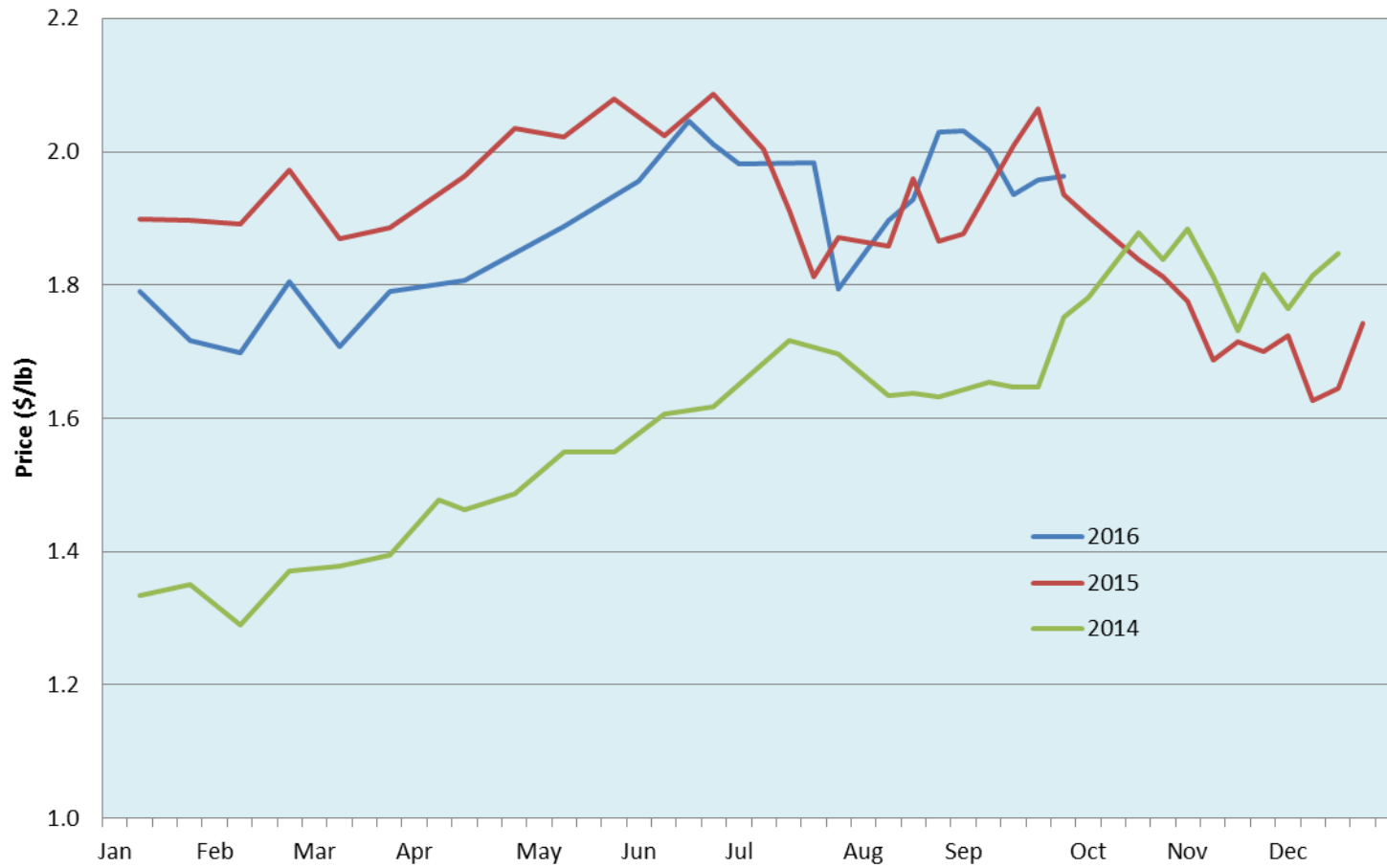
| Date | Sale | Lambs (\$/lb) | | Lambs (\$/lb) | | Lambs (\$/lb) | | Sheep(\$/lb): Bred ewes \$/hd | | Head |
|-------------------|---|---------------|-------------|---------------|-------------|---------------|-------------|-------------------------------|-------------|-------------------------|
| | | Weight (lbs) | low - high | Weight (lbs) | low - high | Weight (lbs) | low - high | | low - high | |
| 26-Sep-16 | Beaver Hill www.beaverhillauctions.com | 0-54: wool | 2.00 - 2.30 | 70-85: wool | 1.80 - 2.18 | 86-105:wool | 1.90 - 2.10 | Ewes: wool | 0.70 - 1.32 | 1646 |
| | | 0-54: hair | 1.88 - 2.10 | | | 86-105:hair | 1.70 - 1.96 | Ewes: hair | 0.70 - 1.50 | |
| | | 55-69: wool | 2.03 - 2.28 | 70-85: hair | 1.70 - 1.98 | 106+:wool | 1.92 - 2.05 | Rams: wool | 0.75 - 1.05 | |
| | | 55-69: hair | 1.76 - 2.15 | | | 106+:hair | 1.89 - 1.95 | Rams: hair | 0.93 - 1.25 | |
| | | | | | | | | Bred Ewes | - - - | |
| | | | | | | Ewe/Lamb(s) | - - - | | | |
| No sale this week | VJV Westlock www.vjvauction.com | 0-69 | - - - | 70-85 | - - - | 86-105 | - - - | Ewes | - - - | - |
| | | | | | | | | Rams | - - - | |
| | | | | | | 106+ | - - - | Bred Ewes | - - - | |
| | | | | | | | | Ewe/Lamb(s) | - - - | |
| 27-Sep-16 | Olds Auction www.oldsauktion.com | 30-50 | 1.75 - 2.20 | 70-80 | 2.00 - 2.20 | 90-100 | 1.90 - 2.10 | Ewes | 0.80 - 1.25 | 397 (incl.goats) |
| | | 50-60 | 2.20 - 2.30 | 80-90 | 1.90 - 2.10 | 100-110 | 1.90 - 2.10 | Rams | 0.85 - 1.10 | |
| | | 60-70 | 2.10 - 2.30 | | | 110+ | 1.80 - 2.10 | Bred Ewes | - - - | |
| 24-Sep-16 | Picture Butte www.picturebutteauction.ca | | | | | Feeder | 2.06 - 2.18 | Slaughter Ewes | - - - | - |
| | | | | | | Slaughter | 1.94 - 1.97 | Feeder Ewes | - - - | |
| | | | | | | | | Bred Ewes | - - - | |
| | | | | | | | | Rams | - - - | |

Ontario Live Animal Markets

| | | | | | | | | | | |
|-----------|---|-------|-------------|-------|-------------|--------|-------------|---------|-------------|------|
| 26-Sep-16 | OSI www.ontariostockyards.on.ca | 0-65 | 2.20 - 2.55 | 65-80 | 2.13 - 2.50 | 95-110 | 2.08 - 2.20 | Sheep | 1.00 - 1.20 | 1067 |
| | | | | 80-95 | 2.08 - 2.27 | 110+ | 1.95 - 2.18 | Thinner | 1.05 - 1.25 | |
| | | | | | | Feeder | 1.65 - 2.00 | Rams | 1.00 - 1.20 | |
| 27-Sep-16 | OLEX www.ontariosheep.org | 0-50 | 1.50 - 1.93 | 65-79 | 2.10 - 2.55 | 95-109 | 2.24 - 2.36 | Sheep | 1.08 - 1.37 | 1304 |
| | | 50-64 | 2.28 - 3.03 | 80-94 | 2.17 - 2.33 | 110+ | 2.29 - 2.35 | | | |
| 26-Sep-16 | Embrun www.ontariosheep.org | 0-50 | 1.30 - 1.55 | 65-79 | 2.08 - 2.36 | 95-109 | 1.99 - 2.05 | Sheep | 0.88 - 1.22 | 273 |
| | | 50-64 | 1.69 - 2.50 | 80-94 | 1.90 - 2.18 | 110+ | 1.35 - 1.90 | | | |
| 22-Sep-16 | Brussels www.ontariosheep.org | 0-50 | 1.60 - 3.00 | 65-79 | 2.01 - 2.60 | 95-109 | 2.04 - 2.30 | Sheep | 1.04 - 1.37 | 536 |
| | | 50-64 | 2.52 - 2.67 | 80-94 | 1.94 - 2.25 | 110+ | 2.00 - 2.32 | | | |

Alberta Lamb Producers does not endorse individual markets or verify prices provided.

Trends* in auction price for heavy lambs in Alberta



* Due to differences among auctions, prices are reported as 'trends' rather than averages.
Graph is updated only for weeks with three markets reporting prices.