

Alberta Live Animal Markets: Visit individual market websites for more information about applicable auction fees and upcoming sales

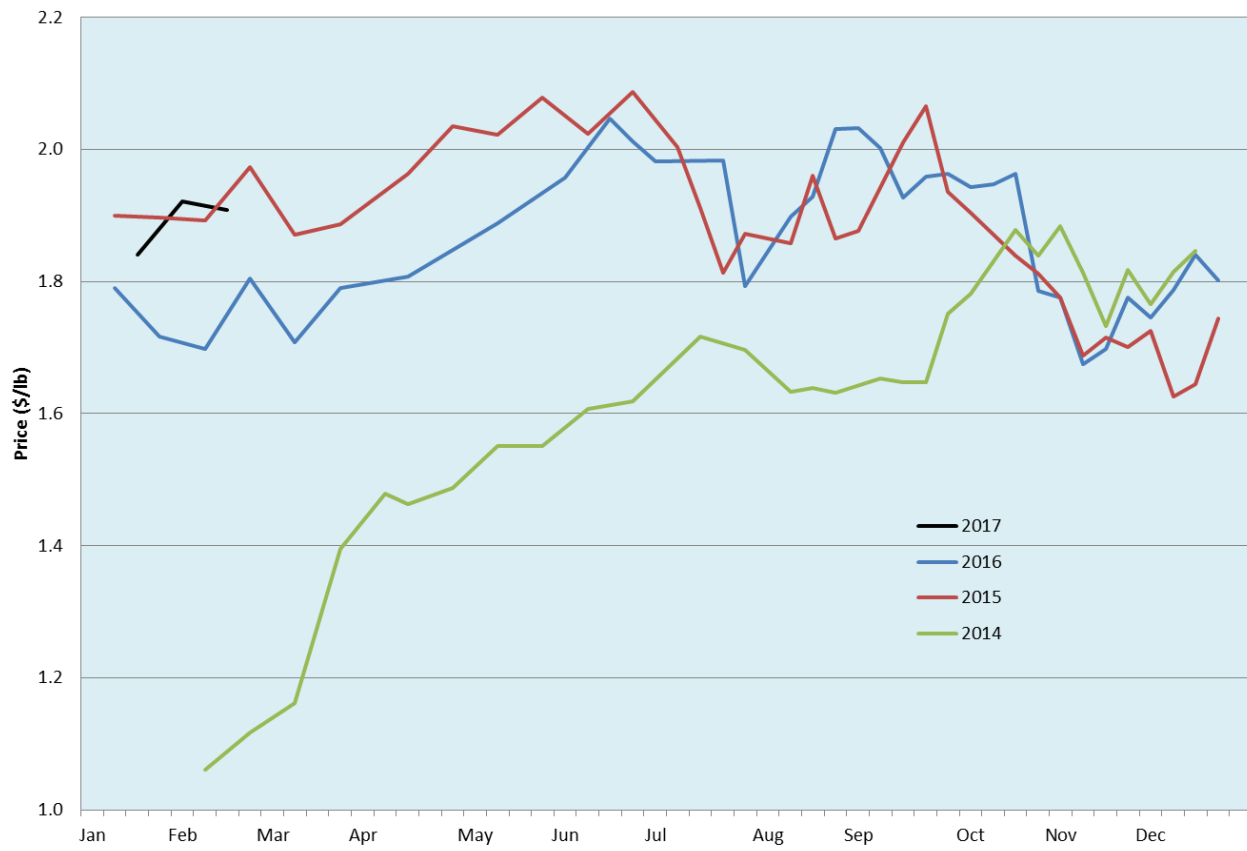
Date	Sale	Lambs (\$/lb)		Lambs (\$/lb)		Lambs (\$/lb)		Sheep(\$/lb): Bred ewes \$/hd		Head
		Weight (lbs)	low - high	Weight (lbs)	low - high	Weight (lbs)	low - high		low - high	
No sale this week	Beaver Hill www.beaverhillauctions.com	0-54: wool	- - -	70-85: wool	- - -	86-105:wool	- - -	Ewes: wool	- - -	-
		0-54: hair	- - -			86-105:hair	- - -	Ewes: hair	- - -	
		55-69: wool	- - -	70-85: hair	- - -	106+:wool	- - -	Rams: wool	- - -	
		55-69: hair	- - -			Bred Ewes	- - -			
		106+:hair	- - -			Ewe&Lamb(s)	- - -			
21-Feb-17	VJV Westlock www.vjvauction.com	0-69: wool	2.27 - 2.35	70-85: wool	2.32 - 2.35	86-105: wool	1.84 - 2.13	Ewes: wool	0.85 - 1.13	255
						86-105: hair	1.50 - 1.65	Rams: wool	1.00 - 1.40	
		0-69: hair	- - -	70-85: hair	- - -	106+: wool	1.35 - 1.93	Bred ewes:hair	140 - 190	
						106+: hair	1.60 - 1.65	Bred Ewes:wool	170 - 210	
21-Feb-17	Olds Auction www.oldsauction.com	30-50	2.50 - 2.60	70-80	2.30 - 2.45	90-100	1.90 - 2.20	Ewes	1.10 - 1.40	
		50-60	2.55 - 2.60	80-90	2.20 - 2.30	100-110	1.75 - 1.85	Rams	1.00 - 1.30	
		60-70	2.40 - 2.55			110+	1.75 - 1.80	Bred Ewes	- - -	
18-Feb-17	Picture Butte www.picturebutteauction.ca					Feeder	2.05 - 2.18	Slaughter Ewes	0.88 - 0.93	-
						Slaughter	1.98 - 2.10	Feeder Ewes	0.88 - 0.93	
								Ewe&lamb(s)	- - -	
								Rams	- - -	

Ontario Live Animal Markets

20-Feb-17	OSI www.ontariostockyards.on.ca	0-65	2.82 - 3.12	65-80	2.48 - 3.00	95-110	2.29 - 2.38	Sheep	1.20 - 1.40	748
				80-95	2.42 - 2.55	110+	2.22 - 2.30	Thinner	1.30 - 1.60	
						Feeder	2.00 - 1.50	Rams	1.20 - 1.50	
21-Feb-17	OLEX www.ontariosheep.org	0-50	- - -	65-79	2.60 - 3.06	95-109	2.27 - 2.48	Sheep	1.00 - 1.75	1118
		50-64	2.95 - 3.34	80-94	2.42 - 2.57	110+	2.18 - 2.27			
20-Feb-17	Embrun www.ontariosheep.org	0-50	1.75 - 1.75	65-79	2.50 - 3.20	95-109	1.84 - 2.35	Sheep	1.02 - 1.35	232
		50-64	2.20 - 2.90	80-94	2.35 - 2.65	110+	1.95 - 2.10			
16-Feb-17	Brussels www.ontariosheep.org	0-50	3.65 - 3.72	65-79	2.60 - 3.32	95-109	2.25 - 2.48	Sheep	1.27 - 1.87	417
		50-64	2.45 - 3.45	80-94	2.29 - 2.56	110+	2.21 - 2.38			

Alberta Lamb Producers does not endorse individual markets or verify prices provided.

Trends* in auction price for heavy lambs in Alberta



*Due to differences among auctions, prices are reported as 'trends' rather than averages.
This graph is updated on weeks with three markets reporting prices.