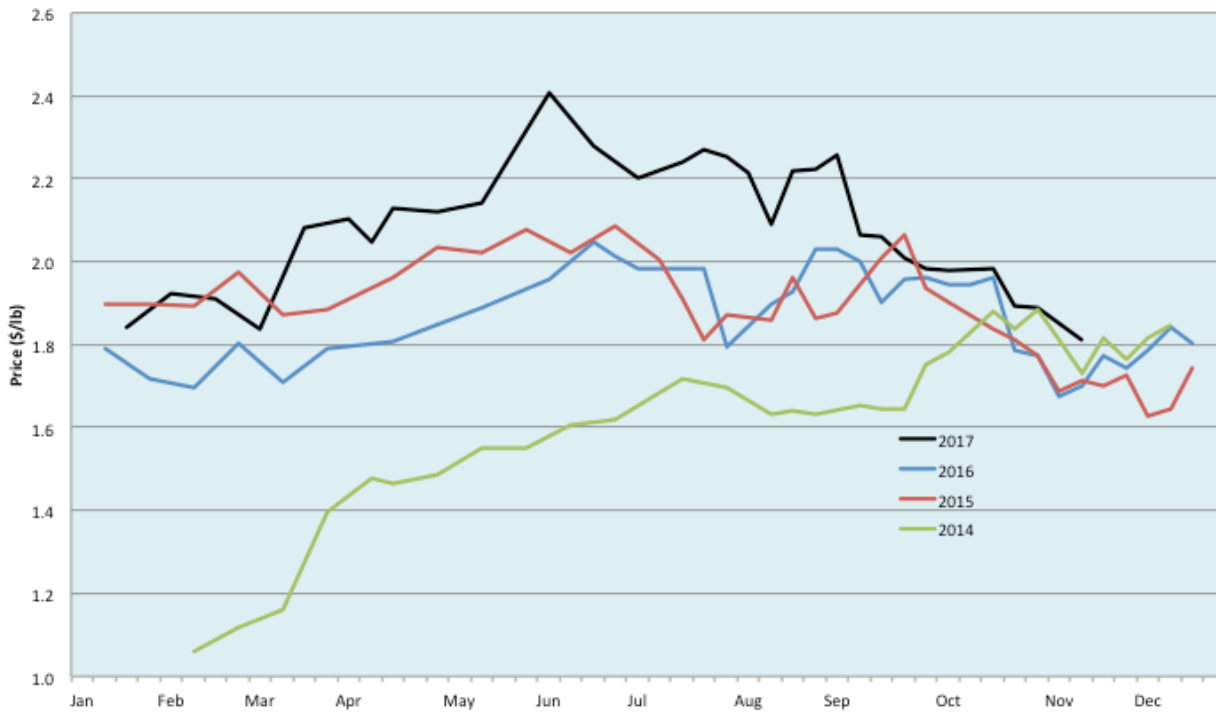


Alberta Live Animal Markets: Visit individual market websites for more information about applicable auction fees and upcoming sales										
Date	Sale	Lambs (\$/lb)		Lambs (\$/lb)		Lambs (\$/lb)		Sheep(\$/lb): Bred ewes \$/hd		Head
		Weight (lbs)	low - high	Weight (lbs)	low - high	Weight (lbs)	low - high	low	high	
13-Nov-17	Beaver Hill www.beaverhillauctions.com	0-54: wool	1.84 - 2.22	70-85: wool	1.94 - 2.15	86-105:wool	1.78 - 2.02	Ewes: wool	0.75 - 1.59	596
		0-54: hair	1.65 - 1.90			86-105:hair	1.70 - 1.96	Ewes: hair	0.84 - 1.43	
		55-69: wool	1.90 - 2.26	70-85: hair	1.90 - 2.00	106+:wool	1.78 - 1.84	Rams: wool	0.90 - 1.29	
		55-69: hair	1.71 - 1.90			106+:hair	1.65 - 1.78	Rams: hair	0.85 - 1.39	
						Bred Ewes	180 - 250			
						Ewe&Lamb(s)	- - -			
No sale this week	VJV Westlock www.vjvauction.com	0-69: wool	- - -	70-85: wool	- - -	86-105: wool	- - -	Ewes: wool	- - -	-
						86-105: hair	- - -	Ewes: hair	- - -	
		0-69: hair	- - -	70-85: hair	- - -	106+: wool	- - -	Rams: wool	- - -	
						106+: hair	- - -	Rams:hair	- - -	
						Bred Ewes:wool	- - -			
						Ewe&Lamb:hair	- - -			
14-Nov-17	Olds Auction www.oldsaction.com	30-50	1.00 - 2.00	70-80	1.60 - 1.85	90-100	1.60 - 1.75	Ewes	0.60 - 1.10	333 <small>(incl.goats)</small>
		50-60	1.50 - 2.00	80-90	1.65 - 1.75	100-110	1.60 - 1.75	Rams	0.60 - 1.00	
		60-70	1.60 - 2.00			110+	1.60 - 1.75	Bred Ewes	140 - 175	
11-Nov-17	Picture Butte www.picturebutteauction.ca					Feeder	2.05 - 2.18	Slaughter Ewes	0.81 - 0.95	-
						Slaughter	1.95 - 1.95	Feeder Ewes	0.94 - 1.05	
								Ewe&lamb(s)	- - -	
								Bred ewes	- - -	
								Rams	- - -	
Ontario Live Animal Markets										
13-Nov-17	OSI www.ontariostockyards.on.ca	0-65	2.20 - 3.27	65-80	2.55 - 2.95	95-110	2.40 - 2.56	Sheep	1.10 - 1.35	560
				80-95	2.40 - 2.75	110+	2.20 - 2.30	Thinner	1.05 - 1.45	
						Feeder	1.50 - 2.50	Rams	1.00 - 1.35	
14-Nov-17	OLEX www.ontariosheep.org	0-50	2.38 - 3.40	65-79	2.35 - 2.98	95-109	2.39 - 2.50	Sheep	1.10 - 1.88	923
		50-64	2.70 - 3.35	80-94	2.18 - 2.60	110+	1.83 - 2.33			
13-Nov-17	Embrun www.ontariosheep.org	0-50	1.00 - 2.20	65-79	2.12 - 2.50	95-109	1.50 - 2.40	Sheep	1.22 - 1.55	436
		50-64	2.17 - 2.52	80-94	1.55 - 2.24	110+	1.40 - 1.85			
09-Nov-17	Brussels www.ontariosheep.org	0-50	2.50 - 2.50	65-79	2.41 - 3.15	95-109	2.34 - 2.46	Sheep	1.15 - 1.60	339
		50-64	2.70 - 3.27	80-94	2.32 - 2.75	110+	1.67 - 2.35			
Alberta Lamb Producers does not endorse individual markets or verify prices provided.										

Trends* in auction price for heavy lambs in Alberta



*Due to differences among auctions, prices are reported as 'trends' rather than averages. This graph is updated on weeks with three markets reporting prices.