

Alberta Live Animal Markets: Visit individual market websites for more information about applicable auction fees and upcoming sales

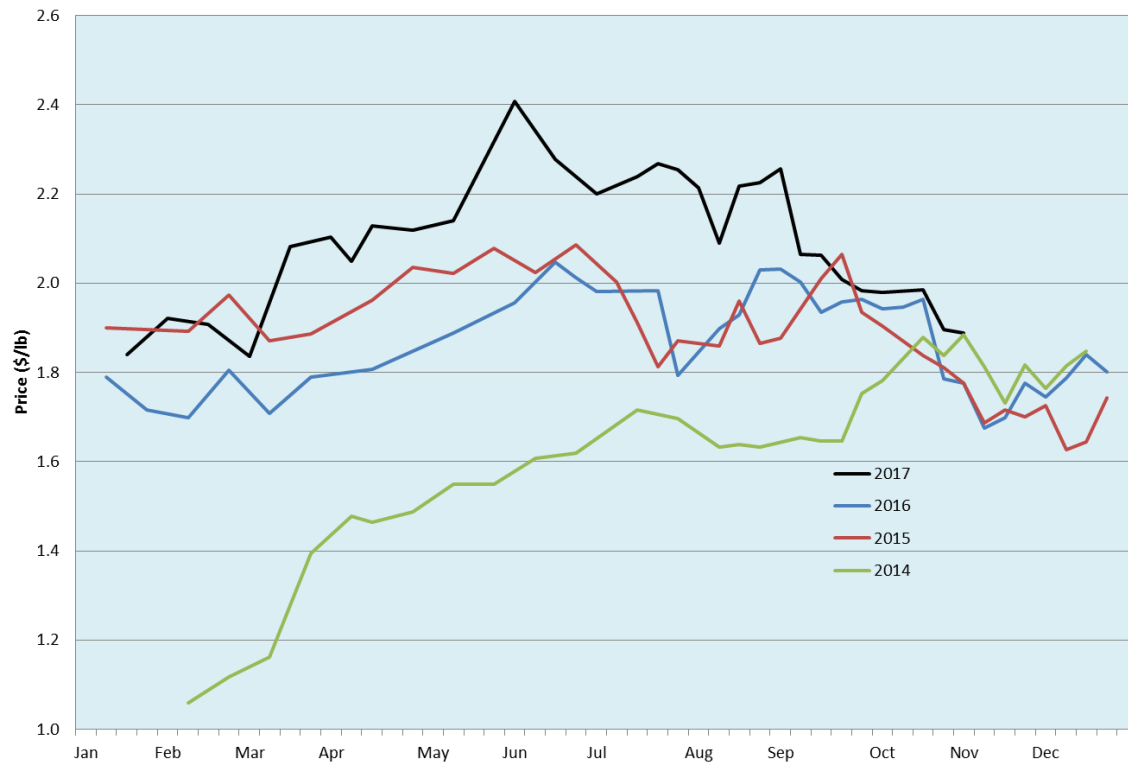
Date	Sale	Lambs (\$/lb)		Lambs (\$/lb)		Lambs (\$/lb)		Sheep(\$/lb): Bred ewes \$/hd		Head
		Weight (lbs)	low - high	Weight (lbs)	low - high	Weight (lbs)	low - high		low - high	
30-Oct-17	Beaver Hill www.beaverhillauctions.com	0-54: wool	1.80 - 2.35	70-85: wool	1.90 - 2.18	86-105:wool	1.87 - 2.01	Ewes: wool	0.85 - 1.49	1105
		0-54: hair	1.75 - 2.20			86-105:hair	1.70 - 1.90	Ewes: hair	0.85 - 1.40	
		55-69: wool	2.00 - 2.35	70-85: hair	1.76 - 1.95	106+:wool	1.78 - 1.90	Rams: wool	0.85 - 2.50	
		55-69: hair	1.75 - 2.06			106+:hair	1.65 - 1.90	Rams: hair	0.87 - 1.25	
No sale this week	VJV Westlock www.vjvauction.com	0-69: wool	- - -	70-85: wool	- - -	86-105: wool	- - -	Ewes: wool	- - -	-
						86-105: hair	- - -	Rams: wool	- - -	
		0-69: hair	- - -	70-85: hair	- - -	106+: wool	- - -	Rams:hair	- - -	
						106+: hair	- - -	Bred Ewes:wool	- - -	
31-Oct-17	Olds Auction www.oldsaction.com	30-50	1.80 - 2.10	70-80	1.85 - 2.15	90-100	1.90 - 2.20	Ewes	0.65 - 1.20	316 (incl.goats)
		50-60	1.80 - 2.10	80-90	1.90 - 2.20	100-110	1.90 - 2.20	Rams	0.75 - 1.30	
		60-70	1.80 - 2.10			110+	1.80 - 2.10	Bred Ewes	- - -	
28-Oct-17	Picture Butte www.picturebutteauction.ca					Feeder	2.18 - 2.25	Slaughter Ewes	0.96 - 1.05	-
						Slaughter	1.90 - 1.98	Feeder Ewes	- - -	
								Ewe&lamb(s)	- - -	
								Bred ewes	- - -	
								Rams	- - -	

Ontario Live Animal Markets

30-Oct-17	OSI www.ontariostockyards.on.ca	0-65	1.45 - 2.38	65-80	1.97 - 2.30	95-110	1.98 - 2.07	Sheep	1.10 - 1.30	1299
				80-95	1.95 - 2.20	110+	1.52 - 2.00	Thinner	1.00 - 1.35	
						Feeder	1.45 - 2.00	Rams	1.00 - 1.25	
31-Oct-17	OLEX www.ontariosheep.org	0-50	1.50 - 2.78	65-79	2.00 - 2.52	95-109	1.90 - 2.05	Sheep	1.05 - 1.38	1215
		50-64	2.40 - 2.65	80-94	2.08 - 2.42	110+	1.95 - 2.03			
30-Oct-17	Embrun www.ontariosheep.org	0-50	2.10 - 2.40	65-79	2.00 - 2.47	95-109	1.72 - 1.96	Sheep	1.28 - 1.50	357
		50-64	2.05 - 2.27	80-94	1.72 - 2.30	110+	1.70 - 1.80			
26-Oct-17	Brussels www.ontariosheep.org	0-50	2.50 - 2.50	65-79	2.00 - 2.30	95-109	1.82 - 2.10	Sheep	0.85 - 1.45	481
		50-64	2.02 - 2.22	80-94	1.77 - 2.07	110+	1.90 - 2.02			

Alberta Lamb Producers does not endorse individual markets or verify prices provided.

Trends* in auction price for heavy lambs in Alberta



*Due to differences among auctions, prices are reported as 'trends' rather than averages.
This graph is updated on weeks with three markets reporting prices.