

Alberta Live Animal Markets: Visit individual market websites for more information about applicable auction fees and upcoming sales

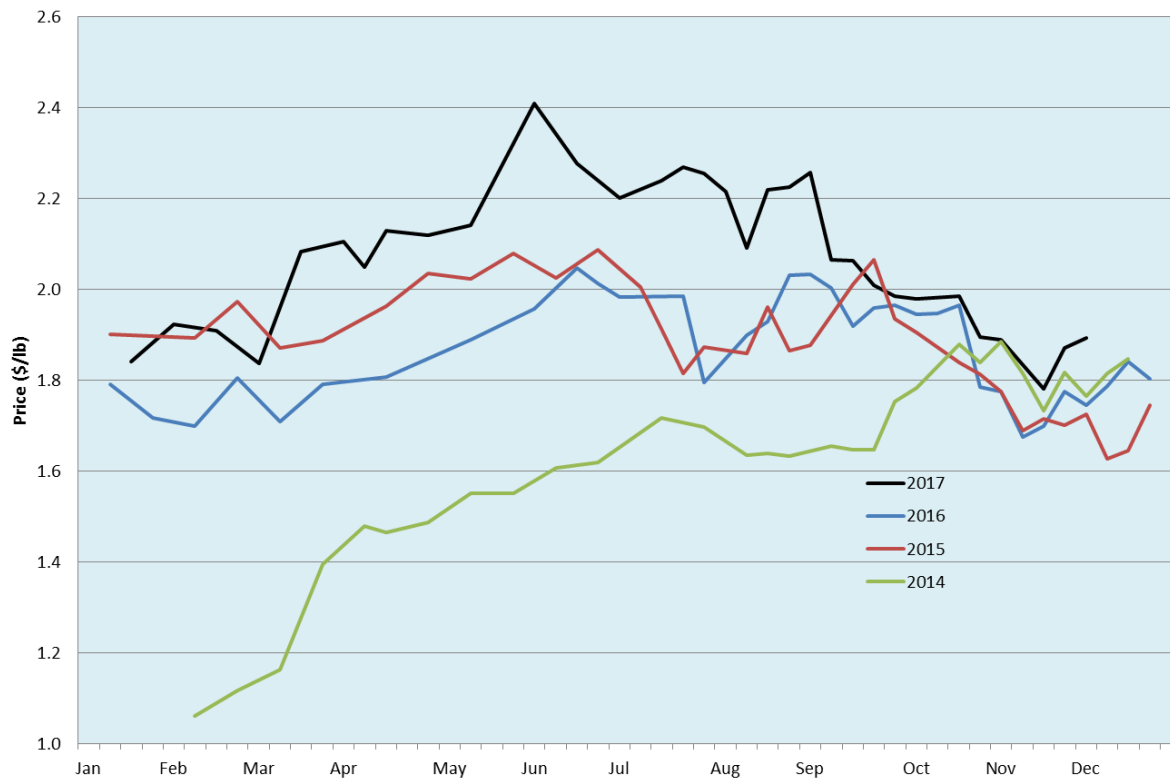
Date	Sale	Lambs (\$/lb)		Lambs (\$/lb)		Lambs (\$/lb)		Sheep(\$/lb): Bred ewes \$/hd		Head
		Weight (lbs)	low - high	Weight (lbs)	low - high	Weight (lbs)	low - high		low - high	
27-Nov-17	Beaver Hill www.beaverhillauctions.com	0-54: wool	2.00 - 2.35	70-85: wool	1.94 - 2.32	86-105:wool	1.85 - 2.18	Ewes: wool	0.80 - 1.79	975
		0-54: hair	1.70 - 2.10			86-105:hair	1.80 - 1.96	Ewes: hair	0.80 - 1.15	
		55-69: wool	2.00 - 2.30	70-85: hair	1.98 - 2.30	106+:wool	1.74 - 1.85	Rams: wool	1.00 - 1.74	
		55-69: hair	1.90 - 2.30			106+:hair	1.65 - 1.78	Rams: hair	0.90 - 1.32	
No sale this week	VJV Westlock www.vjvauction.com	0-69: wool	- - -	70-85: wool	- - -	86-105: wool	- - -	Ewes: wool	- - -	-
						86-105: hair	- - -	Rams: wool	- - -	
		0-69: hair	- - -	70-85: hair	- - -	106+: wool	- - -	Rams:hair	- - -	
						106+: hair	- - -	Bred Ewes:wool	- - -	
28-Nov-17	Olds Auction www.oldsaction.com	30-50	1.00 - 2.50	70-80	1.90 - 2.10	90-100	1.75 - 2.00	Ewes	0.75 - 1.20	284 (incl.goats)
		50-60	2.15 - 2.40	80-90	1.75 - 2.00	100-110	1.75 - 2.00	Rams	0.75 - 1.35	
		60-70	2.00 - 2.20			110+	1.70 - 2.00	Bred Ewes	- - -	
25-Nov-17	Picture Butte www.picturebutteauction.ca					Feeder	2.08 - 2.21	Slaughter Ewes	0.98 - 1.10	-
						Slaughter	1.98 - 2.08	Feeder Ewes	1.06 - 1.11	
								Ewe&lamb(s)	- - -	
								Bred ewes	- - -	

Ontario Live Animal Markets

27-Nov-17	OSI www.ontariostockyards.on.ca	0-65	2.25 - 2.78	65-80	2.23 - 2.93	95-110	2.15 - 2.37	Sheep	1.20 - 1.40	872
				80-95	2.22 - 2.45	110+	1.63 - 2.12	Thinner	1.15 - 1.55	
						Feeder	1.50 - 2.40	Rams	1.15 - 1.40	
28-Nov-17	OLEX www.ontariosheep.org	0-50	2.18 - 2.70	65-79	2.33 - 3.25	95-109	2.05 - 2.29	Sheep	1.33 - 1.80	1196
		50-64	2.40 - 3.95	80-94	2.15 - 2.43	110+	2.00 - 2.20			
27-Nov-17	Embrun www.ontariosheep.org	0-50	2.40 - 2.65	65-79	2.40 - 2.66	95-109	2.17 - 2.30	Sheep	1.35 - 1.62	375
		50-64	2.35 - 2.70	80-94	2.25 - 2.57	110+	- - -			
23-Nov-17	Brussels www.ontariosheep.org	0-50	2.60 - 2.82	65-79	2.50 - 3.05	95-109	2.11 - 2.29	Sheep	1.50 - 2.27	308
		50-64	2.68 - 2.90	80-94	2.20 - 2.62	110+	2.07 - 2.35			

Alberta Lamb Producers does not endorse individual markets or verify prices provided.

Trends* in auction price for heavy lambs in Alberta



*Due to differences among auctions, prices are reported as 'trends' rather than averages.
 This graph is updated on weeks with three markets reporting prices.