

Alberta Live Animal Markets: Visit individual market websites for more information about applicable auction fees and upcoming sales

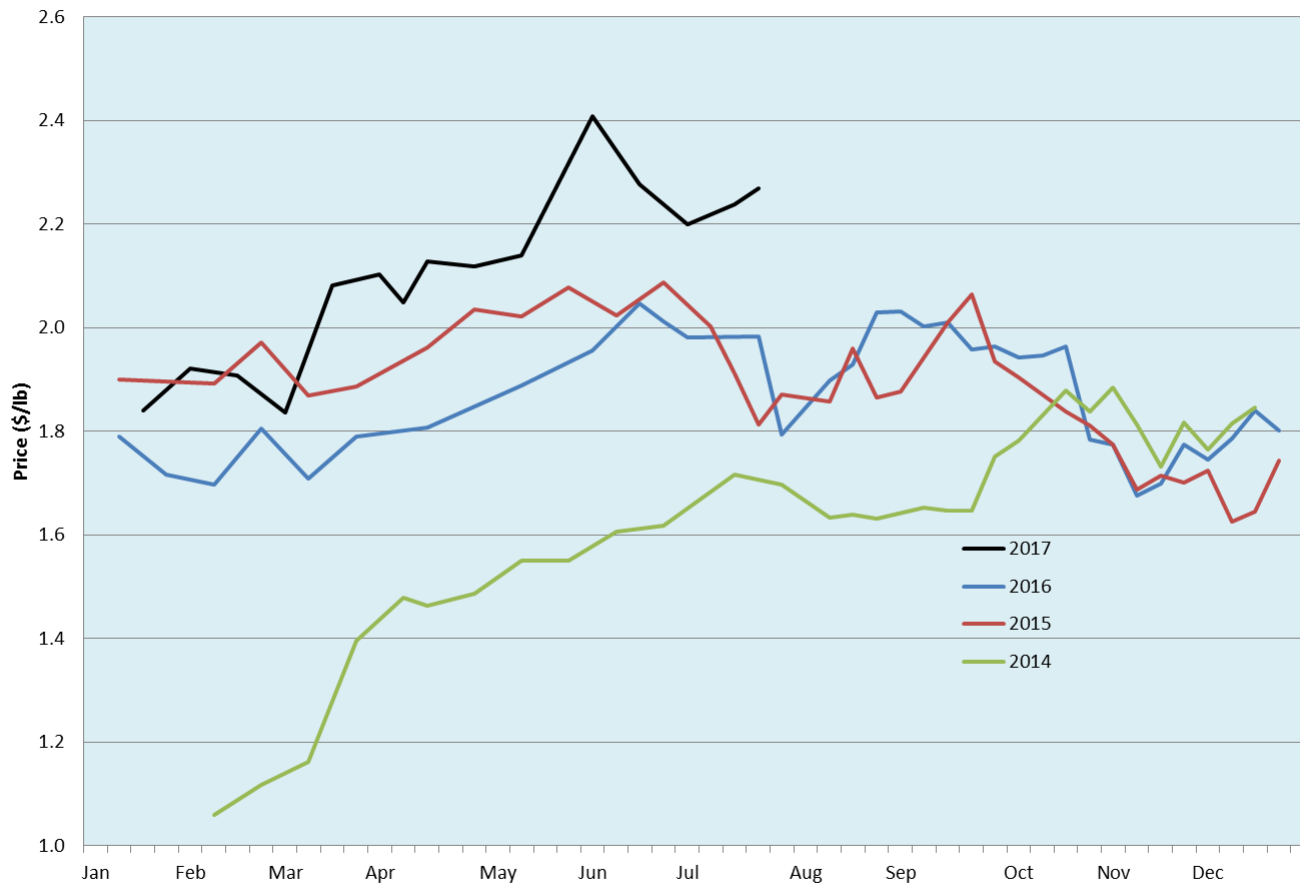
Date	Sale	Lambs (\$/lb)		Lambs (\$/lb)		Lambs (\$/lb)		Sheep(\$/lb): Bred ewes \$/hd		Head
		Weight (lbs)	low - high	Weight (lbs)	low - high	Weight (lbs)	low - high		low - high	
17-Jul-17	Beaver Hill www.beaverhillauctions.com	0-54: wool	2.45 - 3.00	70-85: wool	2.52 - 2.82	86-105:wool	2.15 - 2.54	Ewes: wool	0.90 - 1.41	384
		0-54: hair	2.20 - 2.60			86-105:hair	2.10 - 2.35	Ewes: hair	0.85 - 1.52	
		55-69: wool	2.57 - 3.00	70-85: hair	2.40 - 2.69	106+:wool	2.15 - 2.28	Rams: wool	1.00 - 1.30	
		55-69: hair	2.30 - 2.70			106+:hair	2.00 - 2.21	Rams: hair	1.07 - 1.20	
						Bred Ewes	- - -			
								Ewe&Lamb(s)	- - -	
18-Jul-17	VJV Westlock www.vjvauction.com	0-69: wool	2.12 - 3.00	70-85: wool	2.42 - 2.78	86-105: wool	2.17 - 2.35	Ewes: wool	0.82 - 1.35	218
						86-105: hair	2.00 - 2.20	Ewes: hair	0.92 - 0.97	
		0-69: hair	2.15 - 2.53	70-85: hair	2.10 - 2.40	106+: wool	2.17 - 2.23	Rams: wool	0.95 - 1.05	
						106+: hair	- - -	Bred ewes:hair	- - -	
						Bred Ewes:wool	- - -			
								Ewe&Lamb:wool	- - -	
18-Jul-17	Olds Auction www.oldsaction.com	30-50	2.50 - 3.00	70-80	2.45 - 2.60	90-100	2.30 - 2.50	Ewes	1.00 - 1.40	468
		50-60	2.50 - 3.00	80-90	2.45 - 2.55	100-110	2.30 - 2.40	Rams	1.00 - 1.30	
		60-70	2.50 - 2.80			110+	2.25 - 2.30	Bred Ewes	- - -	
15-Jul-17	Picture Butte www.picturebutteauction.ca					Feeder	2.48 - 2.59	Slaughter Ewes	1.02 - 1.10	-
						Slaughter	2.23 - 2.40	Feeder Ewes	1.05 - 1.19	
								Ewe&lamb(s)	- - -	
								Bred ewes	- - -	
								Rams	1.18 - 1.25	

Ontario Live Animal Markets

17-Jul-17	OSI www.ontariostockyards.on.ca	0-65	2.68 - 2.84	65-80	2.23 - 2.73	95-110	2.33 - 2.61	Sheep	1.12 - 1.25	862
				80-95	2.23 - 2.50	110+	1.80 - 2.40	Thinner	1.15 - 1.40	
						Feeder	1.80 - 2.50	Rams	1.15 - 1.40	
18-Jul-17	OLEX www.ontariosheep.org	0-50	2.50 - 3.05	65-79	2.43 - 2.93	95-109	2.35 - 2.48	Sheep	1.13 - 1.40	1484
		50-64	2.70 - 3.12	80-94	2.38 - 2.51	110+	2.35 - 2.39			
17-Jul-17	Embrun www.ontariosheep.org	0-50	2.30 - 3.40	65-79	2.69 - 2.85	95-109	2.27 - 2.52	Sheep	1.10 - 1.38	337
		50-64	2.59 - 2.99	80-94	2.40 - 2.80	110+	1.30 - 1.30			
13-Jul-17	Brussels www.ontariosheep.org	0-50	2.20 - 3.01	65-79	2.36 - 2.60	95-109	2.30 - 2.50	Sheep	1.12 - 1.50	713
		50-64	2.53 - 2.70	80-94	2.30 - 2.52	110+	2.27 - 2.42			

Alberta Lamb Producers does not endorse individual markets or verify prices provided.

Trends* in auction price for heavy lambs in Alberta



*Due to differences among auctions, prices are reported as 'trends' rather than averages.
This graph is updated on weeks with three markets reporting prices.