

Alberta Live Animal Markets: Visit individual market websites for more information about applicable auction fees and upcoming sales

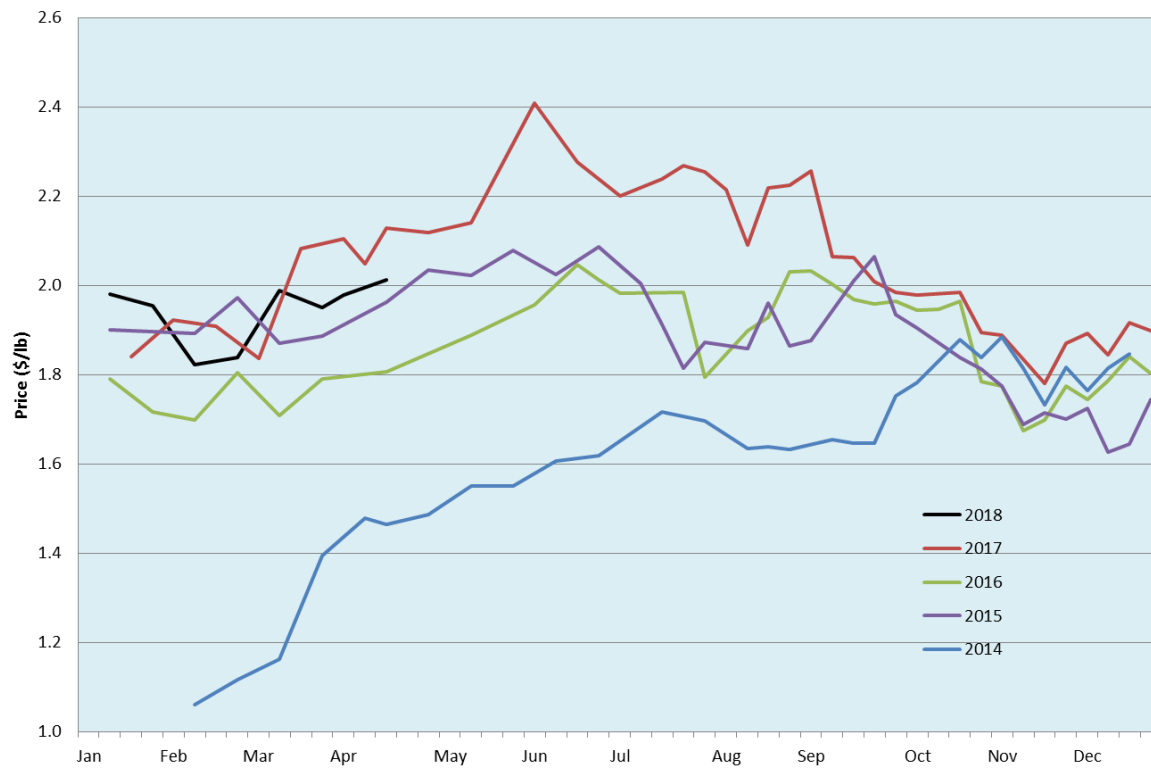
Date	Sale	Lambs (\$/lb)		Lambs (\$/lb)		Lambs (\$/lb)		Sheep(\$/lb): Bred ewes \$/hd		Head
		Weight (lbs)	low - high	Weight (lbs)	low - high	Weight (lbs)	low - high		low - high	
9-Apr-18	Beaver Hill www.beaverhillauctions.com	0-54: wool	2.50 - 3.00	70-85: wool	2.37 - 2.70	86-105:wool	2.13 - 2.47	Ewes: wool	0.90 - 1.47	448
		0-54: hair	2.10 - 2.44			86-105:hair	1.90 - 2.30	Ewes: hair	0.90 - 1.32	
		55-69: wool	2.53 - 3.00	70-85: hair	2.28 - 2.45	106+:wool	1.92 - 2.05	Rams: wool	0.96 - 1.20	
		55-69: hair	2.40 - 2.70			106+:hair	1.80 - 1.96	Rams: hair	0.97 - 1.51	
						Bred Ewes	225 - 315			
						Ewe&Lamb(s)	240 - 325			
No sale this week	VJV Westlock www.vjvauction.com	0-69: wool	- - -	70-85: wool	- - -	86-105: wool	- - -	Ewes: wool	- - -	-
						86-105: hair	- - -	Ewes: hair	- - -	
		0-69: hair	- - -	70-85: hair	- - -	106+: wool	- - -	Rams: wool	- - -	
						106+: hair	- - -	Rams:hair	- - -	
						Bred Ewes:wool	- - -			
						Ewe&Lamb:hair	- - -			
10-Apr-18	Olds Auction www.oldsaction.com	30-50	2.40 - 2.60	70-80	2.40 - 2.60	90-100	2.10 - 2.30	Ewes	1.00 - 1.40	178
		50-60	2.40 - 2.60	80-90	2.30 - 2.50	100-110	2.00 - 2.20	Rams	0.90 - 1.30	
		60-70	2.40 - 2.60			110+	2.00 - 2.20	Bred Ewes	200 - 275	
7-Apr-18	Picture Butte www.picturebutteauction.ca					Feeder	2.08 - 2.28	Slaughter Ewes	0.97 - 1.11	-
						Slaughter	1.94 - 2.05	Feeder Ewes	1.21 - 1.35	
								Ewe&lamb(s)	- - -	
								Bred ewes	- - -	
								Rams	- - -	

Ontario Live Animal Markets

9-Apr-18	OSI www.ontariostockyards.on.ca	0-65	3.40 - 3.85	65-80	3.02 - 3.88	95-110	2.64 - 3.27	Sheep	1.25 - 1.40	900
				80-95	2.87 - 3.21	110+	1.55 - 2.63	Thinner	1.30 - 1.50	
						Feeder	2.50 - 3.50	Rams	1.30 - 1.60	
10-Apr-18	OLEX www.ontariosheep.org	0-50	3.85 - 4.23	65-79	3.63 - 3.90	95-109	3.23 - 3.55	Sheep	1.20 - 1.65	1015
		50-64	3.95 - 4.27	80-94	3.33 - 3.71	110+	2.38 - 3.33			
9-Apr-18	Embrun www.ontariosheep.org	0-50	3.35 - 3.70	65-79	3.35 - 3.60	95-109	2.55 - 3.30	Sheep	1.26 - 1.67	179
		50-64	3.35 - 3.54	80-94	2.75 - 3.60	110+	2.15 - 2.90			
5-Apr-18	Brussels www.ontariosheep.org	0-50	3.60 - 3.92	65-79	3.22 - 3.75	95-109	2.95 - 3.21	Sheep	1.30 - 1.87	951
		50-64	3.46 - 3.92	80-94	2.95 - 3.22	110+	1.16 - 1.70			

Alberta Lamb Producers does not endorse individual markets or verify prices provided.

Trends* in auction price for heavy lambs in Alberta



*Due to differences among auctions, prices are reported as 'trends' rather than averages.
This graph is updated on weeks with two or more markets reporting prices.