

Alberta Live Animal Markets: Visit individual market websites for more information about applicable auction fees and upcoming sales

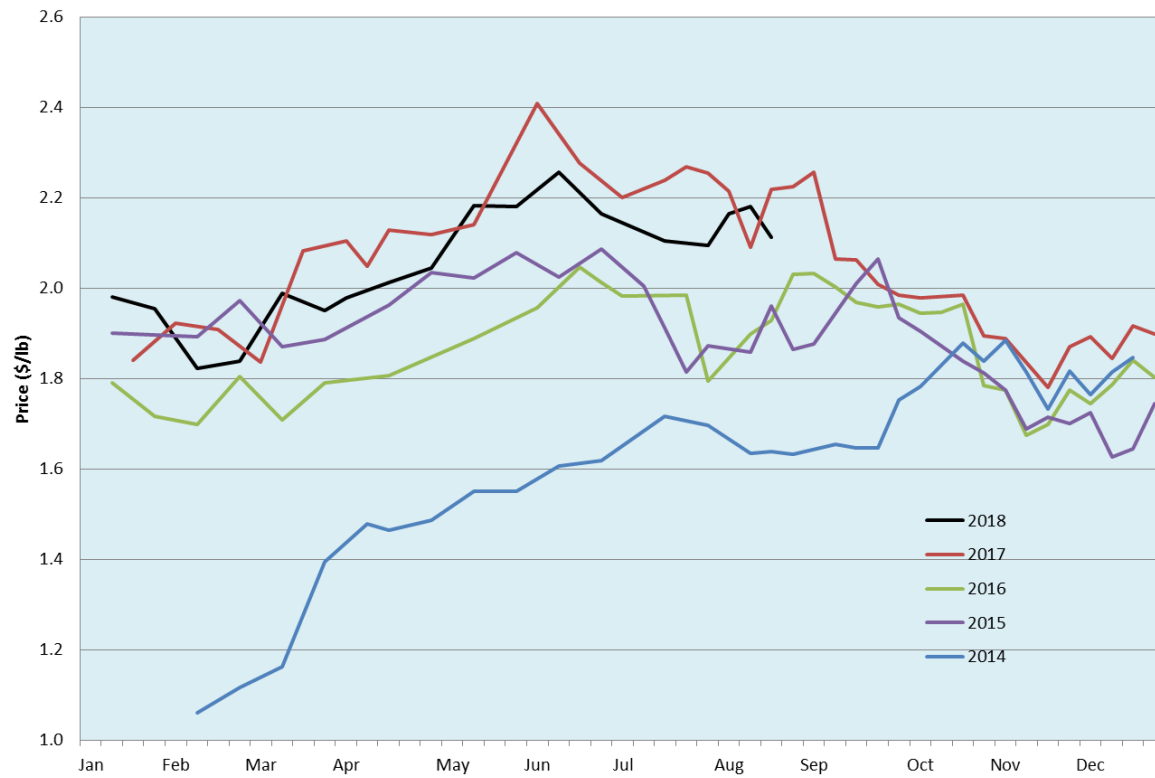
Date	Sale	Lambs (\$/lb)		Lambs (\$/lb)		Lambs (\$/lb)		Sheep(\$/lb): Bred ewes \$/hd		Head	
		Weight (lbs)	low - high	Weight (lbs)	low - high	Weight (lbs)	low - high		low - high		
13-Aug-18	Beaver Hill www.beaverhillauctions.com	0-54: wool	1.85 - 2.30	70-85: wool	2.10 - 2.48	86-105:wool	2.00 - 2.48	Ewes: wool	1.00 - 1.84	1794	
		0-54: hair	1.50 - 2.00			86-105:hair	2.05 - 2.48	Ewes: hair	1.00 - 1.76		
		55-69: wool	1.95 - 2.28	70-85: hair	2.00 - 2.67	106+:wool	1.90 - 2.24	Rams: wool	1.07 - 1.44		
		55-69: hair	1.74 - 2.24			106+:hair	1.90 - 2.20	Rams: hair	1.53 - 2.00		
						Bred Ewes	- - -				
						Ewe&Lamb(s)	170 - 240				
No sale this week	VJV Westlock www.vjvauction.com	0-69: wool	- - -	70-85: wool	- - -	86-105: wool	- - -	Ewes: wool	- - -	-	
						86-105: hair	- - -	Ewes: hair	- - -		
		0-69: hair	- - -	70-85: hair	- - -	106+: wool	- - -	Rams: wool	- - -		
						106+: hair	- - -	Rams:hair	- - -		
						Bred Ewes:wool	- - -				
						Ewe&Lamb:hair	- - -				
14-Aug-18	Olds Auction www.oldsauction.com	30-50	1.85 - 2.10	70-80	1.90 - 2.20	90-100	2.10 - 2.40	Ewes	0.80 - 1.20	865 (incl.goats)	
		50-60	1.85 - 2.10	80-90	2.00 - 2.40	100-110	2.00 - 2.30	Rams	0.80 - 1.30		
		60-70	1.85 - 2.10			110+	2.00 - 2.30	Bred Ewes	- - -		
Not Available	Picture Butte www.picturebutteauction.ca					Feeder	- - -	Slaughter Ewes	- - -	-	
						Slaughter	- - -	Feeder Ewes	- - -		
								Ewe&lamb(s)	- - -		
								Bred ewes	- - -		
								Rams	- - -		

Ontario Live Animal Markets

13-Aug-18	OSI www.ontariostockyards.on.ca	0-65	2.40 - 2.85	65-80	2.41 - 2.83	95-110	2.38 - 2.75	Sheep	1.20 - 1.60	2469
				80-95	2.60 - 2.92	110+	2.25 - 2.56	Thinner	1.30 - 1.50	
						Feeder	2.00 - 2.40	Rams	1.50 - 1.80	
14-Aug-18	OLEX www.ontariosheep.org	0-50	2.15 - 3.18	65-79	2.45 - 2.92	95-109	2.60 - 2.75	Sheep	1.00 - 1.50	3227
		50-64	2.04 - 2.58	80-94	2.80 - 3.00	110+	2.56 - 2.86			
13-Aug-18	Embrun www.ontariosheep.org	0-50	1.95 - 3.20	65-79	2.50 - 3.02	95-109	2.74 - 2.92	Sheep	1.24 - 1.60	872
		50-64	2.15 - 3.10	80-94	2.72 - 3.05	110+	2.60 - 2.85			
9-Aug-18	Brussels www.ontariosheep.org	0-50	2.40 - 2.80	65-79	2.41 - 2.90	95-109	2.44 - 2.70	Sheep	1.07 - 1.47	811
		50-64	2.40 - 2.62	80-94	2.38 - 2.64	110+	2.36 - 2.42			

Alberta Lamb Producers does not endorse individual markets or verify prices provided.

Trends* in auction price for heavy lambs in Alberta



*Due to differences among auctions, prices are reported as 'trends' rather than averages.
 This graph is updated on weeks with two or more markets reporting prices.