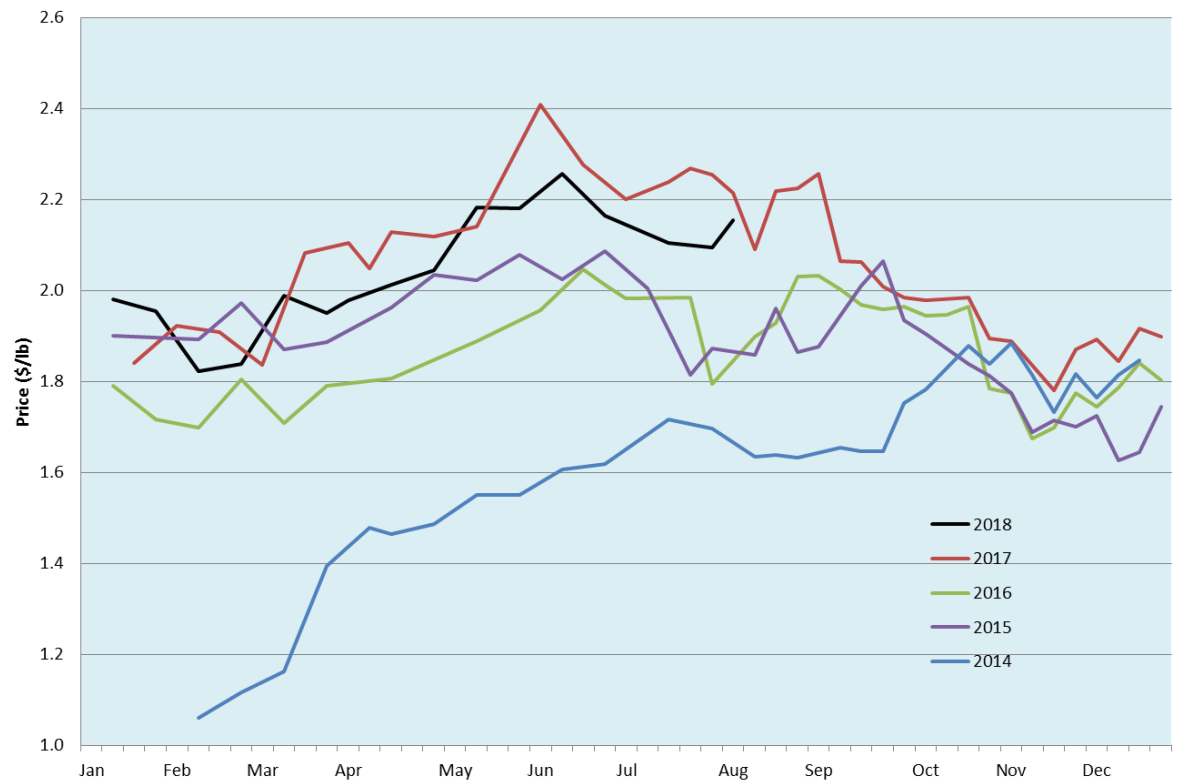


Alberta Live Animal Markets: Visit individual market websites for more information about applicable auction fees and upcoming sales										
Date	Sale	Lambs (\$/lb)		Lambs (\$/lb)		Lambs (\$/lb)		Sheep(\$/lb): Bred ewes \$/hd		Head
		Weight (lbs)	low - high	Weight (lbs)	low - high	Weight (lbs)	low - high		low - high	
30-Jul-18	Beaver Hill www.beaverhillauctions.com	0-54: wool	2.20 - 2.50	70-85: wool	2.13 - 2.47	86-105:wool	2.10 - 2.35	Ewes: wool	0.90 - 1.72	848
		0-54: hair	2.00 - 2.32			86-105:hair	2.20 - 2.35	Ewes: hair	0.90 - 1.55	
		55-69: wool	2.20 - 2.48	70-85: hair	2.15 - 2.45	106+:wool	2.10 - 2.30	Rams: wool	0.90 - 1.15	
		55-69: hair	2.11 - 2.40			Bred Ewes	- - -			
						106+:hair	2.10 - 2.26	Ewe&Lamb(s)	170 - 240	
No sale this week	VJV Westlock www.vjvauction.com	0-69: wool	- - -	70-85: wool	- - -	86-105: wool	- - -	Ewes: wool	- - -	-
						86-105: hair	- - -	Ewes: hair	- - -	
		0-69: hair	- - -	70-85: hair	- - -	106+: wool	- - -	Rams: wool	- - -	
						106+: hair	- - -	Rams:hair	- - -	
								Bred Ewes:wool	- - -	
31-Jul-18	Olds Auction www.oldsauktion.com	30-50	2.25 - 2.40	70-80	2.15 - 2.35	90-100	2.10 - 2.40	Ewes	0.85 - 1.15	373 (incl.goats)
		50-60	2.25 - 2.40	80-90	2.10 - 2.40	100-110	2.10 - 2.30	Rams	0.85 - 1.05	
		60-70	2.25 - 2.40			110+	2.00 - 2.25	Bred Ewes	- - -	
Not Available	Picture Butte www.picturebutteauction.ca					Feeder	- - -	Slaughter Ewes	- - -	-
						Slaughter	- - -	Feeder Ewes	- - -	
								Ewe&lamb(s)	- - -	
								Bred ewes	- - -	
								Rams	- - -	
Ontario Live Animal Markets										
30-Jul-18	OSI www.ontariostockyards.on.ca	0-65	2.35 - 2.95	65-80	2.60 - 2.85	95-110	2.45 - 2.70	Sheep	1.20 - 1.50	968
				80-95	2.50 - 2.90	110+	2.40 - 2.60	Thinner	1.30 - 1.50	
						Feeder	2.20 - 2.40	Rams	1.50 - 1.80	
31-Jul-18	OLEX www.ontariosheep.org	0-50	2.28 - 3.20	65-79	2.55 - 2.93	95-109	2.64 - 2.80	Sheep	1.13 - 1.71	2033
		50-64	2.50 - 3.00	80-94	2.78 - 3.00	110+	2.49 - 2.59			
30-Jul-18	Embrun www.ontariosheep.org	0-50	2.00 - 2.35	65-79	2.52 - 2.90	95-109	2.67 - 2.77	Sheep	1.30 - 1.60	324
		50-64	2.20 - 3.00	80-94	2.65 - 2.74	110+	2.60 - 2.74			
26-Jul-18	Brussels www.ontariosheep.org	0-50	2.10 - 2.60	65-79	2.75 - 3.00	95-109	2.40 - 2.54	Sheep	1.32 - 1.57	545
		50-64	2.85 - 3.02	80-94	2.50 - 2.76	110+	2.22 - 2.50			
Alberta Lamb Producers does not endorse individual markets or verify prices provided.										

Trends* in auction price for heavy lambs in Alberta



*Due to differences among auctions, prices are reported as 'trends' rather than averages.
 This graph is updated on weeks with two or more markets reporting prices.