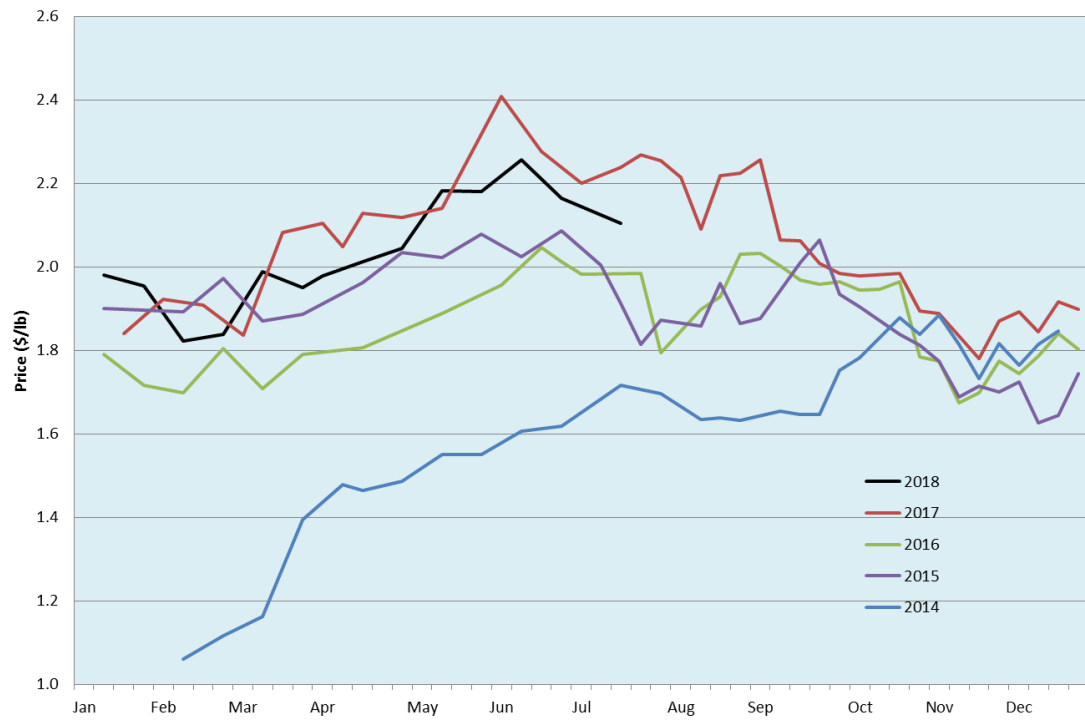


Alberta Live Animal Markets: Visit individual market websites for more information about applicable auction fees and upcoming sales										
Date	Sale	Lambs (\$/lb)		Lambs (\$/lb)		Lambs (\$/lb)		Sheep(\$/lb): Bred ewes \$/hd		Head
		Weight (lbs)	low - high	Weight (lbs)	low - high	Weight (lbs)	low - high		low - high	
9-Jul-18	Beaver Hill www.beaverhillauctions.com	0-54: wool	2.05 - 2.50	70-85: wool	2.12 - 2.38	86-105:wool	2.05 - 2.40	Ewes: wool	0.75 - 1.61	1681
		0-54: hair	2.00 - 2.20			86-105:hair	2.00 - 2.35	Ewes: hair	0.85 - 1.25	
		55-69: wool	2.20 - 2.45	70-85: hair	1.90 - 2.25	106+:wool	2.05 - 2.21	Rams: wool	0.80 - 1.55	
		55-69: hair	2.10 - 2.30			106+:hair	1.90 - 2.15	Rams: hair	0.88 - 1.52	
						Bred Ewes	- - -			
						Ewe&Lamb(s)	190 - 240			
No sale this week	VJV Westlock www.vjvauction.com	0-69: wool	- - -	70-85: wool	- - -	86-105: wool	- - -	Ewes: wool	- - -	-
						86-105: hair	- - -	Ewes: hair	- - -	
		0-69: hair	- - -	70-85: hair	- - -	106+: wool	- - -	Rams: wool	- - -	
						106+: hair	- - -	Rams:hair	- - -	
						Bred Ewes:wool	- - -			
						Ewe&Lamb:hair	- - -			
10-Jul-18	Olds Auction www.oldsaction.com	30-50	2.00 - 2.50	70-80	2.00 - 2.20	90-100	2.00 - 2.10	Ewes	0.80 - 1.10	349 (incl.goats)
		50-60	2.00 - 2.40	80-90	2.00 - 2.20	100-110	2.00 - 2.10	Rams	0.85 - 1.00	
		60-70	2.00 - 2.30			110+	2.00 - 2.10	Bred Ewes	- - -	
7-Jul-18	Picture Butte www.picturebutteauction.ca					Feeder	2.18 - 2.38	Slaughter Ewes	- - -	-
						Slaughter	2.08 - 2.18	Feeder Ewes	- - -	
								Ewe&lamb(s)	- - -	
								Bred ewes	- - -	
						Rams	- - -			
Ontario Live Animal Markets										
9-Jul-18	OSI www.ontariostockyards.on.ca	0-65	2.90 - 3.04	65-80	2.65 - 3.00	95-110	2.52 - 2.70	Sheep	1.10 - 1.35	978
				80-95	2.50 - 2.90	110+	2.00 - 2.50	Thinner	1.20 - 1.50	
						Feeder	2.30 - 2.70	Rams	1.30 - 1.60	
10-Jul-18	OLEX www.ontariosheep.org	0-50	2.45 - 3.33	65-79	2.73 - 3.28	95-109	2.61 - 2.76	Sheep	1.28 - 1.80	1512
		50-64	2.50 - 3.15	80-94	2.60 - 2.88	110+	2.64 - 2.65			
9-Jul-18	Embrun www.ontariosheep.org	0-50	2.00 - 2.45	65-79	2.67 - 2.82	95-109	2.60 - 2.70	Sheep	1.02 - 1.45	340
		50-64	2.44 - 2.80	80-94	2.67 - 2.85	110+	2.62 - 2.62			
5-Jul-18	Brussels www.ontariosheep.org	0-50	1.90 - 1.90	65-79	2.44 - 3.06	95-109	2.39 - 2.59	Sheep	1.00 - 1.17	369
		50-64	3.00 - 3.20	80-94	2.25 - 2.62	110+	1.75 - 2.41			
Alberta Lamb Producers does not endorse individual markets or verify prices provided.										

Trends* in auction price for heavy lambs in Alberta



*Due to differences among auctions, prices are reported as 'trends' rather than averages.
This graph is updated on weeks with two or more markets reporting prices.