

Alberta Live Animal Markets: Visit individual market websites for more information about applicable auction fees and upcoming sales

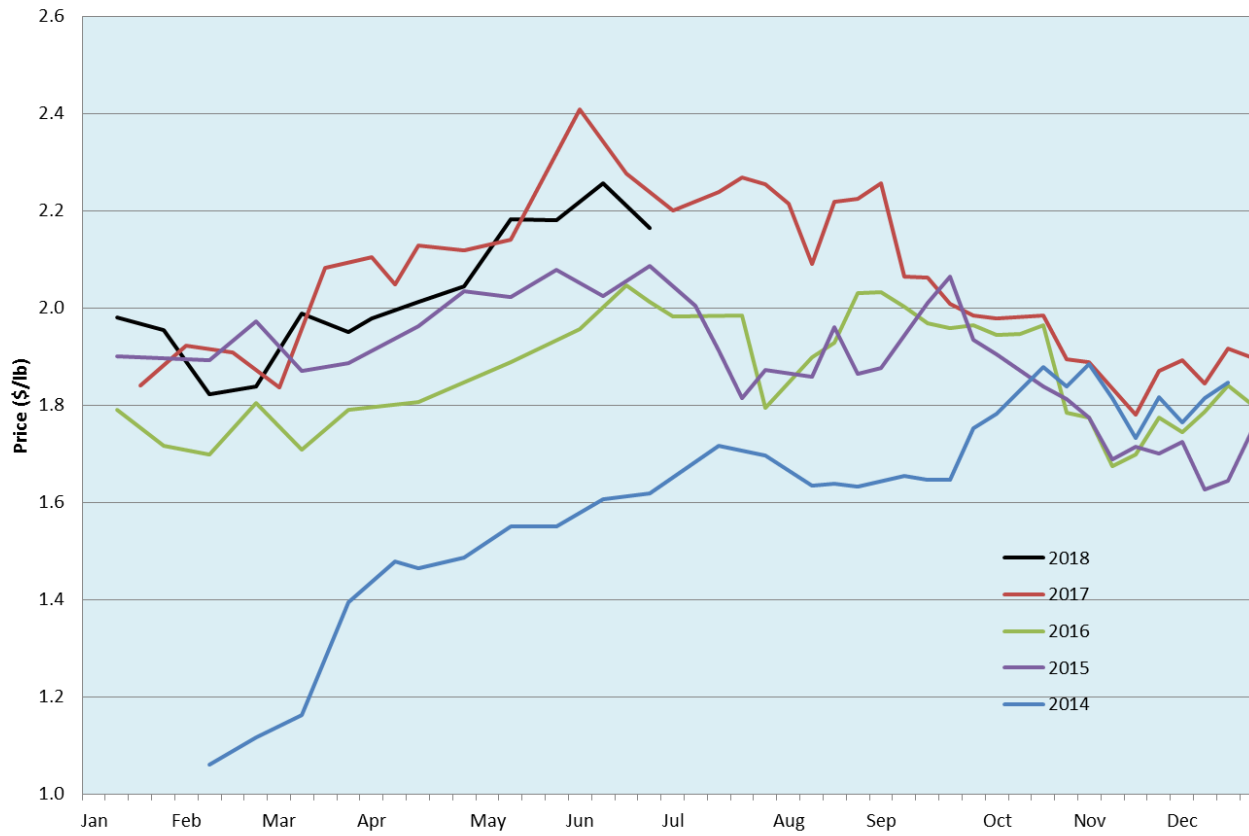
Date	Sale	Lambs (\$/lb)		Lambs (\$/lb)		Lambs (\$/lb)		Sheep(\$/lb): Bred ewes \$/hd		Head
		Weight (lbs)	low - high	Weight (lbs)	low - high	Weight (lbs)	low - high		low - high	
18-Jun-18	Beaver Hill www.beaverhillauctions.com	0-54: wool	2.10 - 2.40	70-85: wool	2.25 - 2.60	86-105:wool	2.20 - 2.45	Ewes: wool	0.75 - 2.00	874
		0-54: hair	2.00 - 2.20			86-105:hair	2.15 - 2.35	Ewes: hair	0.85 - 1.60	
		55-69: wool	2.23 - 2.60	70-85: hair	2.20 - 2.45	106+:wool	2.10 - 2.30	Rams: wool	0.85 - 1.16	
		55-69: hair	2.10 - 2.50			106+:hair	2.00 - 2.15	Rams: hair	0.90 - 1.75	
						Bred Ewes	- - -			
						Ewe&Lamb(s)	240 - 300			
19-Jun-18	VJV Westlock www.vjvauction.com	0-69: wool	1.57 - 2.58	70-85: wool	2.20 - 2.47	86-105: wool	2.00 - 2.29	Ewes: wool	0.90 - 1.80	451
						86-105: hair	1.80 - 2.00	Ewes: hair	0.52 - 1.45	
		0-69: hair	1.45 - 2.42	70-85: hair	- - -	106+: wool	1.95 - 2.21	Rams: wool	0.72 - 1.40	
						106+: hair	1.65 - 2.05	Rams:hair	1.07 - 1.42	
						Bred Ewes:wool	- - -			
						Ewe&Lamb:hair	- - -			
19-Jun-18	Olds Auction www.oldsauction.com	30-50	2.20 - 2.40	70-80	2.20 - 2.30	90-100	2.00 - 2.20	Ewes	0.80 - 1.00	423
		50-60	2.20 - 2.40	80-90	2.10 - 2.20	100-110	2.00 - 2.20	Rams	0.80 - 1.00	
		60-70	2.20 - 2.40			110+	2.00 - 2.20	Bred Ewes	- - -	
16-Jun-18	Picture Butte www.picturebutteauction.ca					Feeder	2.31 - 2.58	Slaughter Ewes	0.81 - 0.97	-
						Slaughter	2.08 - 2.10	Feeder Ewes	- - -	
								Ewe&lamb(s)	- - -	
								Bred ewes	- - -	
								Rams	- - -	

Ontario Live Animal Markets

18-Jun-18	OSI www.ontariostockyards.on.ca	0-65	2.43 - 3.15	65-80	2.40 - 2.75	95-110	2.39 - 2.55	Sheep	1.10 - 1.30	1055
				80-95	2.43 - 2.63	110+	2.48 - 2.50	Thinner	1.20 - 1.50	
						Feeder	2.40 - 2.60	Rams	1.30 - 1.65	
19-Jun-18	OLEX www.ontariosheep.org	0-50	3.00 - 3.45	65-79	2.80 - 3.30	95-109	2.71 - 2.85	Sheep	1.00 - 1.35	1454
		50-64	3.15 - 3.53	80-94	2.60 - 2.91	110+	1.08 - 2.18			
18-Jun-18	Embrun www.ontariosheep.org	0-50	1.80 - 3.10	65-79	2.25 - 2.80	95-109	2.20 - 2.70	Sheep	1.00 - 1.30	416
		50-64	2.50 - 2.95	80-94	2.35 - 2.80	110+	1.50 - 2.30			
14-Jun-18	Brussels www.ontariosheep.org	0-50	2.70 - 2.75	65-79	2.70 - 2.95	95-109	2.77 - 2.91	Sheep	1.10 - 1.37	487
		50-64	2.45 - 3.23	80-94	2.70 - 2.83	110+	1.70 - 2.10			

Alberta Lamb Producers does not endorse individual markets or verify prices provided.

Trends* in auction price for heavy lambs in Alberta



*Due to differences among auctions, prices are reported as 'trends' rather than averages.
This graph is updated on weeks with two or more markets reporting prices.