

Alberta Live Animal Markets: Visit individual market websites for more information about applicable auction fees and upcoming sales

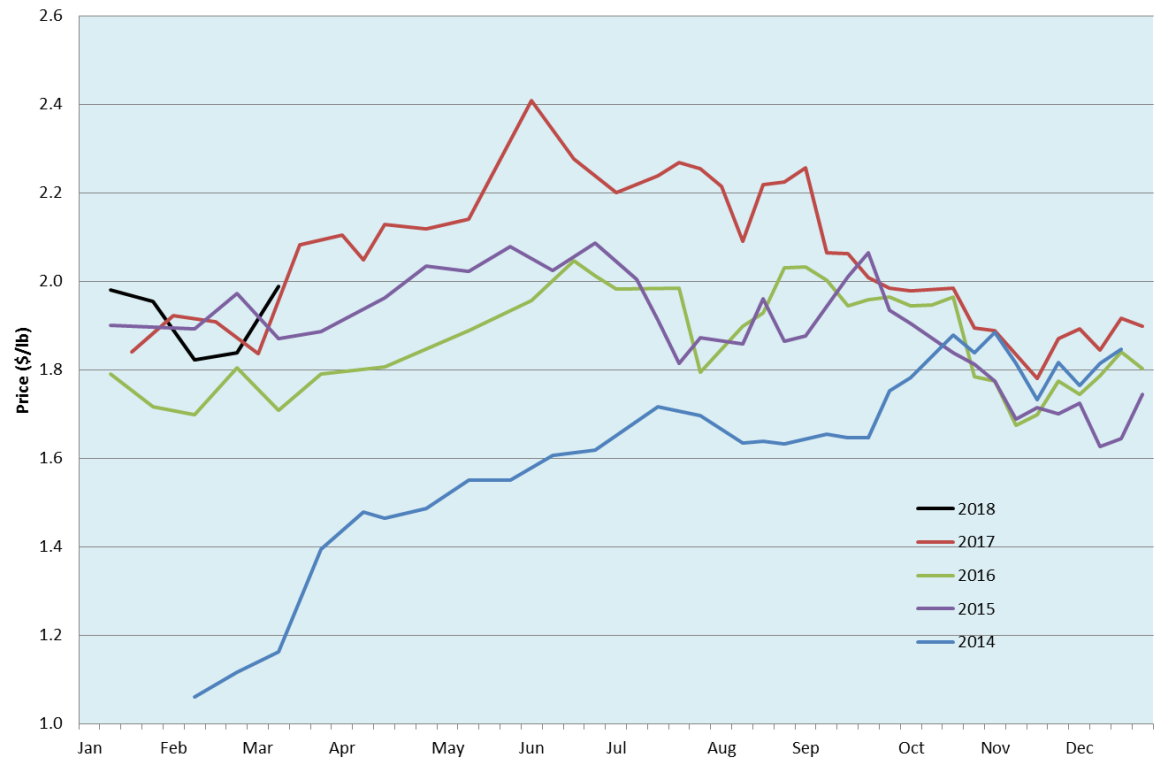
Date	Sale	Lambs (\$/lb)		Lambs (\$/lb)		Lambs (\$/lb)		Sheep(\$/lb): Bred ewes \$/hd		Head
		Weight (lbs)	low - high	Weight (lbs)	low - high	Weight (lbs)	low - high		low - high	
No sale this week	Beaver Hill www.beaverhillauctions.com	0-54: wool	- - -	70-85: wool	- - -	86-105:wool	- - -	Ewes: wool	- - -	-
		0-54: hair	- - -			86-105:hair	- - -	Ewes: hair	- - -	
		55-69: wool	- - -	70-85: hair	- - -	106+:wool	- - -	Rams: wool	- - -	
		55-69: hair	- - -			106+:hair	- - -	Rams: hair	- - -	
						Bred Ewes	- - -			
						Ewe&Lamb(s)	- - -			
No sale this week	VJV Westlock www.vjvauction.com	0-69: wool	- - -	70-85: wool	- - -	86-105: wool	- - -	Ewes: wool	- - -	-
						86-105: hair	- - -	Ewes: hair	- - -	
		0-69: hair	- - -	70-85: hair	- - -	106+: wool	- - -	Rams: wool	- - -	
						106+: hair	- - -	Rams:hair	- - -	
						Bred Ewes:wool	- - -			
						Ewe&Lamb:hair	- - -			
13-Mar-18	Olds Auction www.oldsaction.com	30-50	2.60 - 3.00	70-80	2.60 - 2.80	90-100	2.30 - 2.40	Ewes	1.00 - 1.40	364
		50-60	2.60 - 2.80	80-90	2.40 - 2.80	100-110	2.00 - 2.20	Rams	0.85 - 1.30	
		60-70	2.60 - 2.80			110+	1.85 - 2.10	Bred Ewes	- - -	
10-Mar-18	Picture Butte www.picturebutteauction.ca					Feeder	2.18 - 2.31	Slaughter Ewes	0.98 - 1.18	-
						Slaughter	1.96 - 2.05	Feeder Ewes	1.09 - 1.35	
								Ewe&lamb(s)	- - -	
								Bred ewes	- - -	
								Rams	- - -	

Ontario Live Animal Markets

12-Mar-18	OSI www.ontariostockyards.on.ca	0-65	3.55 - 4.40	65-80	3.00 - 4.00	95-110	2.45 - 2.68	Sheep	1.20 - 1.35	930
				80-95	2.22 - 3.00	110+	1.92 - 2.41	Thinner	1.10 - 1.50	
						Feeder	2.50 - 3.00	Rams	1.20 - 1.40	
13-Mar-18	OLEX www.ontariosheep.org	0-50	3.23 - 3.90	65-79	3.13 - 4.00	95-109	2.13 - 2.55	Sheep	1.10 - 1.50	2127
		50-64	3.53 - 4.58	80-94	2.48 - 3.38	110+	2.15 - 2.38			
12-Mar-18	Embrun www.ontariosheep.org	0-50	3.15 - 3.85	65-79	2.95 - 3.40	95-109	2.20 - 2.50	Sheep	1.08 - 1.55	350
		50-64	3.10 - 3.66	80-94	2.60 - 3.20	110+	1.78 - 2.10			
8-Mar-18	Brussels www.ontariosheep.org	0-50	3.75 - 4.00	65-79	2.83 - 3.45	95-109	2.67 - 2.81	Sheep	1.24 - 1.96	418
		50-64	3.45 - 3.87	80-94	2.50 - 3.05	110+	2.17 - 2.59			

Alberta Lamb Producers does not endorse individual markets or verify prices provided.

Trends* in auction price for heavy lambs in Alberta



*Due to differences among auctions, prices are reported as 'trends' rather than averages.
This graph is updated on weeks with two or more markets reporting prices.