

Alberta Live Animal Markets: Visit individual market websites for more information about applicable auction fees and upcoming sales

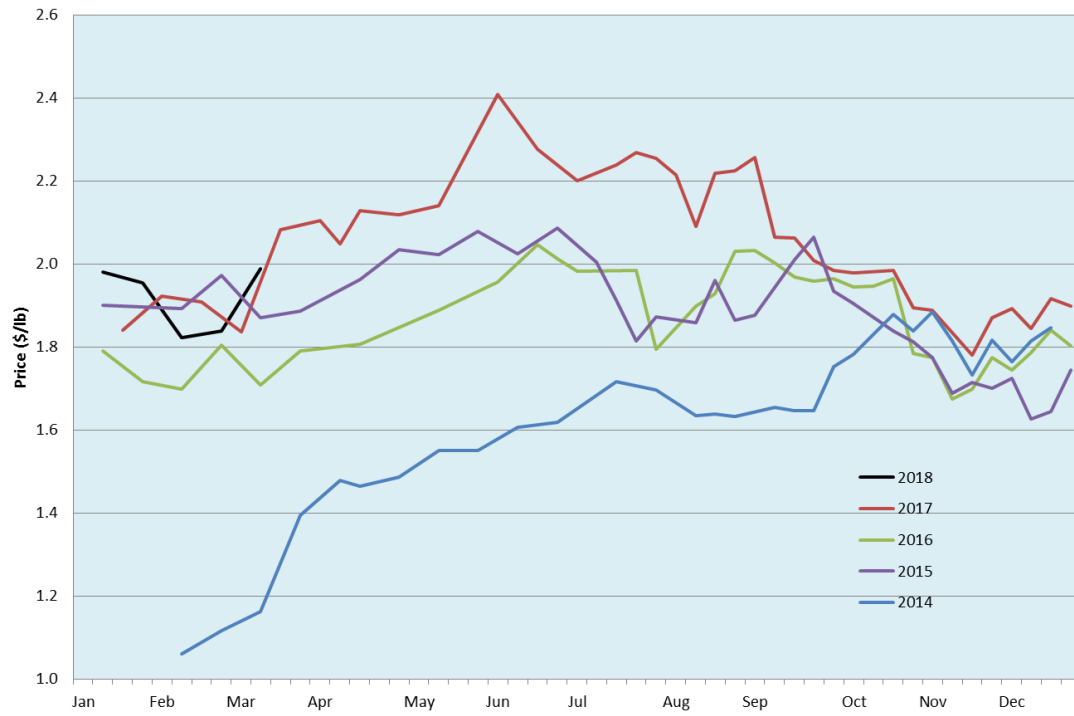
Date	Sale	Lambs (\$/lb)		Lambs (\$/lb)		Lambs (\$/lb)		Sheep(\$/lb): Bred ewes \$/hd		Head
		Weight (lbs)	low - high	Weight (lbs)	low - high	Weight (lbs)	low - high		low - high	
5-Mar-18	Beaver Hill www.beaverhillauctions.com	0-54: wool	2.32 - 2.60	70-85: wool	2.32 - 2.55	86-105:wool	1.95 - 2.35	Ewes: wool	1.00 - 1.39	654
		0-54: hair	2.20 - 2.42			86-105:hair	1.94 - 2.27	Ewes: hair	1.10 - 1.26	
		55-69: wool	2.40 - 2.60	70-85: hair	2.25 - 2.45	106+:wool	1.75 - 2.00	Rams: wool	1.00 - 1.22	
		55-69: hair	2.30 - 2.50			106+:hair	1.66 - 1.89	Rams: hair	1.10 - 1.23	
No sale this week	VJV Westlock www.vjvauction.com	0-69: wool	- - -	70-85: wool	- - -	86-105: wool	- - -	Ewes: wool	- - -	-
						86-105: hair	- - -	Ewes: hair	- - -	
		0-69: hair	- - -	70-85: hair	- - -	106+: wool	- - -	Rams: wool	- - -	
						106+: hair	- - -	Rams:hair	- - -	
6-Mar-18	Olds Auction www.oldsaction.com	30-50	2.40 - 2.60	70-80	2.50 - 2.80	90-100	2.10 - 2.20	Ewes	1.00 - 1.40	64 <small>(incl.goats)</small>
		50-60	2.50 - 2.80	80-90	2.40 - 2.60	100-110	2.00 - 2.20	Rams	0.85 - 1.30	
		60-70	2.50 - 2.80			110+	2.00 - 2.20	Bred Ewes	230 - 260	
No sale this week	Picture Butte www.picturebutteauction.ca					Feeder	- - -	Slaughter Ewes	- - -	-
						Slaughter	- - -	Feeder Ewes	- - -	
								Ewe&lamb(s)	- - -	
								Bred ewes	- - -	

Ontario Live Animal Markets

5-Mar-18	OSI www.ontariostockyards.on.ca	0-65	2.60 - 3.40	65-80	2.63 - 3.33	95-110	2.50 - 2.68	Sheep	1.20 - 1.45	562
				80-95	2.25 - 2.88	110+	1.90 - 2.00	Thinner	1.20 - 1.70	
						Feeder	2.40 - 3.00	Rams	1.30 - 1.80	
6-Mar-18	OLEX www.ontariosheep.org	0-50	3.48 - 3.65	65-79	3.05 - 3.65	95-109	2.62 - 2.80	Sheep	1.10 - 1.63	1334
		50-64	3.17 - 3.80	80-94	2.60 - 3.30	110+	1.88 - 2.15			
5-Mar-18	Embrun www.ontariosheep.org	0-50	2.40 - 3.35	65-79	3.00 - 3.30	95-109	2.12 - 2.57	Sheep	1.15 - 1.67	300
		50-64	2.60 - 3.00	80-94	2.65 - 3.05	110+	1.72 - 2.15			
1-Mar-18	Brussels www.ontariosheep.org	0-50	3.45 - 3.45	65-79	2.80 - 3.47	95-109	2.10 - 2.30	Sheep	1.17 - 1.55	525
		50-64	3.25 - 3.67	80-94	2.40 - 2.97	110+	1.85 - 2.13			

Alberta Lamb Producers does not endorse individual markets or verify prices provided.

Trends* in auction price for heavy lambs in Alberta



*Due to differences among auctions, prices are reported as 'trends' rather than averages.
This graph is updated on weeks with two or more markets reporting prices.