

Alberta Live Animal Markets: Visit individual market websites for more information about applicable auction fees and upcoming sales

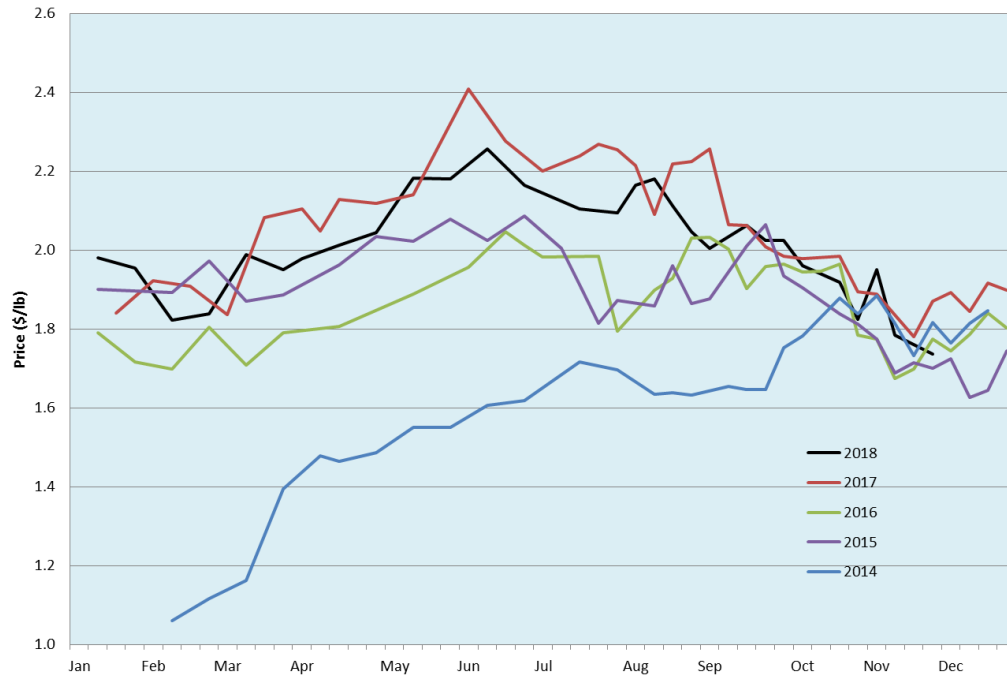
Date	Sale	Lambs (\$/lb)		Lambs (\$/lb)		Lambs (\$/lb)		Sheep(\$/lb): Bred ewes \$/hd		Head
		Weight (lbs)	low - high	Weight (lbs)	low - high	Weight (lbs)	low - high		low - high	
19-Nov-18	Beaver Hill www.beaverhillauctions.com	0-54: wool	1.85 - 2.10	70-85: wool	1.75 - 1.97	86-105:wool	1.70 - 1.89	Ewes: wool	0.80 - 1.36	1023
		0-54: hair	1.50 - 1.75			86-105:hair	1.45 - 1.65	Ewes: hair	0.84 - 1.18	
		55-69: wool	1.75 - 2.10	70-85: hair	1.51 - 1.70	106+:wool	1.70 - 1.80	Rams: wool	0.80 - 1.10	
		55-69: hair	1.50 - 1.85			106+:hair	1.40 - 1.65	Rams: hair	1.20 - 1.35	
						Bred Ewes	190 - 240			
						Ewe&Lamb(s)	- - -			
20-Nov-18	VJV Westlock www.vjvauction.com	0-69: wool	1.10 - 1.70	70-85: wool	1.25 - 1.73	86-105: wool	1.45 - 1.67	Ewes: wool	0.37 - 0.97	-
						86-105: hair	1.00 - 1.14	Ewes: hair	0.35 - 0.80	
		0-69: hair	1.12 - 1.62	70-85: hair	1.40 - 1.65	106+: wool	1.32 - 1.50	Rams: wool	0.60 - 1.97	
						106+: hair	- - -	Rams: hair	- - -	
						Bred Ewes:wool	140 - 180			
						Ewe&Lamb:hair	- - -			
20-Nov-18	Olds Auction www.oldsauktion.com	30-50	1.30 - 1.60	70-80	1.60 - 2.00	90-100	1.60 - 2.00	Ewes	0.90 - 1.00	95 (incl.goats)
		50-60	1.30 - 1.65	80-90	1.60 - 2.00	100-110	1.60 - 1.80	Rams	0.90 - 1.00	
		60-70	1.60 - 2.00			110+	1.60 - 1.80	Bred Ewes	- - -	
17-Nov-18	Picture Butte www.picturebutteauction.ca					Feeder	1.35 - 1.75	Slaughter Ewes	0.80 - 0.98	-
						Slaughter	1.71 - 1.80	Feeder Ewes	0.86 - 1.08	
								Ewe&lamb(s)	- - -	
								Bred ewes	- - -	
								Rams	- - -	

Ontario Live Animal Markets

19-Nov-18	OSI www.ontariostockyards.on.ca	0-65	2.65 - 2.88	65-80	2.17 - 2.83	95-110	2.05 - 2.22	Sheep	1.20 - 1.40	1047
				80-95	2.06 - 2.38	110+	1.80 - 2.00	Thinner	1.25 - 1.60	
						Feeder	1.50 - 2.00	Rams	1.20 - 1.50	
20-Nov-18	OLEX www.ontariosheep.org	0-50	2.35 - 3.10	65-79	2.40 - 3.19	95-109	2.03 - 2.24	Sheep	1.40 - 1.55	1884
		50-64	2.80 - 3.45	80-94	2.08 - 2.35	110+	2.05 - 2.20			
19-Nov-18	Embrun www.ontariosheep.org	0-50	2.55 - 3.25	65-79	2.32 - 2.72	95-109	1.96 - 2.05	Sheep	1.32 - 1.62	498
		50-64	2.64 - 2.85	80-94	1.98 - 2.28	110+	1.87 - 1.98			
15-Nov-18	Brussels www.ontariosheep.org	0-50	- - -	65-79	2.37 - 2.75	95-109	2.10 - 2.17	Sheep	1.30 - 1.40	211
		50-64	1.50 - 3.30	80-94	1.95 - 2.22	110+	1.75 - 1.95			

Alberta Lamb Producers does not endorse individual markets or verify prices provided.

Trends* in auction price for heavy lambs in Alberta



*Due to differences among auctions, prices are reported as 'trends' rather than averages.
This graph is updated on weeks with two or more markets reporting prices.