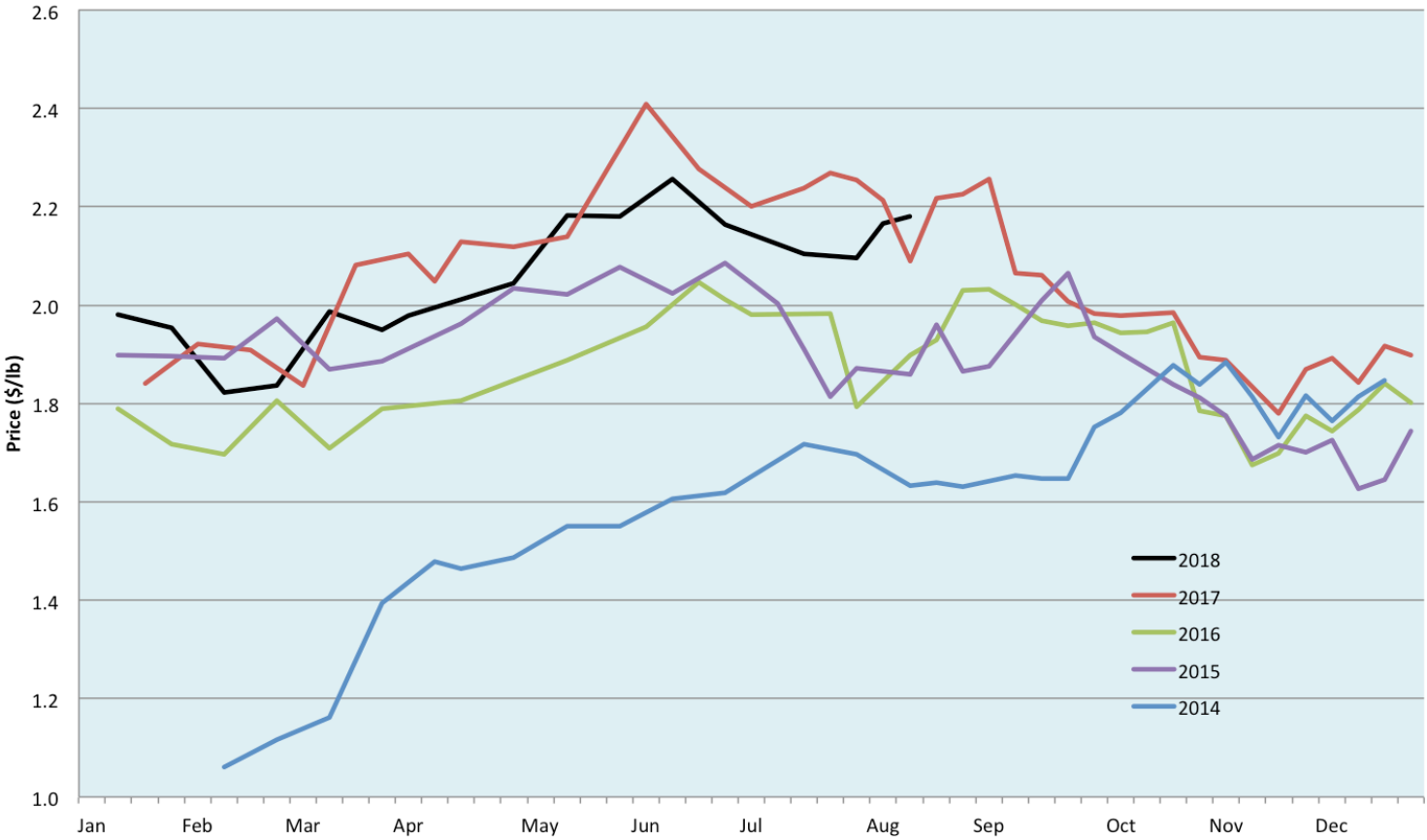


Alberta Live Animal Markets: Visit individual market websites for more information about applicable auction fees and upcoming sales										
Date	Sale	Lambs (\$/lb)		Lambs (\$/lb)		Lambs (\$/lb)		Sheep(\$/lb): Bred ewes \$/hd		Head
		Weight (lbs)	low - high	Weight (lbs)	low - high	Weight (lbs)	low - high		low - high	
07-Aug-18	Beaver Hill www.beaverhillauctions.com	0-54: wool	2.20 - 2.61	70-85: wool	2.30 - 2.56	86-105:wool	2.20 - 2.48	Ewes: wool	0.90 - 1.69	1096
		0-54: hair	2.00 - 2.32			86-105:hair	2.20 - 2.35	Ewes: hair	0.85 - 1.86	
		55-69: wool	2.10 - 2.56	70-85: hair	2.30 - 2.55	106+:wool	2.20 - 2.36	Rams: wool	1.12 - 1.30	
		55-69: hair	2.11 - 2.46			106+:hair	2.10 - 2.26	Rams: hair	1.20 - 1.59	
								Bred Ewes	- - -	
						Ewe&Lamb(s)	170 - 240			
No sale this week	JVJ Westlock www.vjvauction.com	0-69: wool	- - -	70-85: wool	- - -	86-105: wool	- - -	Ewes: wool	- - -	-
						86-105: hair	- - -	Ewes: hair	- - -	
		0-69: hair	- - -	70-85: hair	- - -	106+: wool	- - -	Rams: wool	- - -	
						106+: hair	- - -	Rams:hair	- - -	
								Bred Ewes:wool	- - -	
						Ewe&Lamb:hair	- - -			
07-Aug-18	Olds Auction www.oldsauuction.com	30-50	2.10 - 2.40	70-80	2.10 - 2.25	90-100	2.00 - 2.20	Ewes	0.85 - 1.40	640 (incl.goats)
		50-60	2.10 - 2.30	80-90	2.00 - 2.20	100-110	2.00 - 2.20	Rams	0.85 - 1.30	
		60-70	2.10 - 2.30			110+	2.00 - 2.15	Bred Ewes	- - -	
Not Available	Picture Butte www.picturebutteauction.ca					Feeder	- - -	Slaughter Ewes	- - -	-
						Slaughter	- - -	Feeder Ewes	- - -	
								Ewe&lamb(s)	- - -	
								Bred ewes	- - -	
								Rams	- - -	
Ontario Live Animal Markets										
06-Aug-18	OSI www.ontariostockyards.on.ca	0-65	2.40 - 3.00	65-80	2.65 - 2.87	95-110	2.63 - 2.74	Sheep	1.20 - 1.50	781
				80-95	2.65 - 2.80	110+	2.30 - 2.60	Thinner	1.30 - 1.50	
						Feeder	2.30 - 2.40	Rams	1.50 - 1.75	
07-Aug-18	OLEX www.ontariosheep.org	0-50	2.50 - 3.28	65-79	2.63 - 3.01	95-109	2.55 - 2.70	Sheep	1.20 - 1.50	2514
		50-64	2.53 - 3.30	80-94	2.64 - 2.80	110+	1.93 - 2.50			
06-Aug-18	Embrun www.ontariosheep.org	0-50	1.45 - 2.50	65-79	2.25 - 2.85	95-109	2.80 - 3.00	Sheep	1.10 - 1.60	652
		50-64	2.00 - 2.75	80-94	2.40 - 3.02	110+	2.55 - 2.72			
02-Aug-18	Brussels www.ontariosheep.org	0-50	2.30 - 3.40	65-79	2.74 - 3.05	95-109	2.50 - 2.71	Sheep	1.17 - 1.57	521
		50-64	2.80 - 3.20	80-94	2.52 - 2.90	110+	2.22 - 2.42			
Alberta Lamb Producers does not endorse individual markets or verify prices provided.										

Trends* in auction price for heavy lambs in Alberta



*Due to differences among auctions, prices are reported as 'trends' rather than averages. This graph is updated on weeks with two or more markets reporting prices.