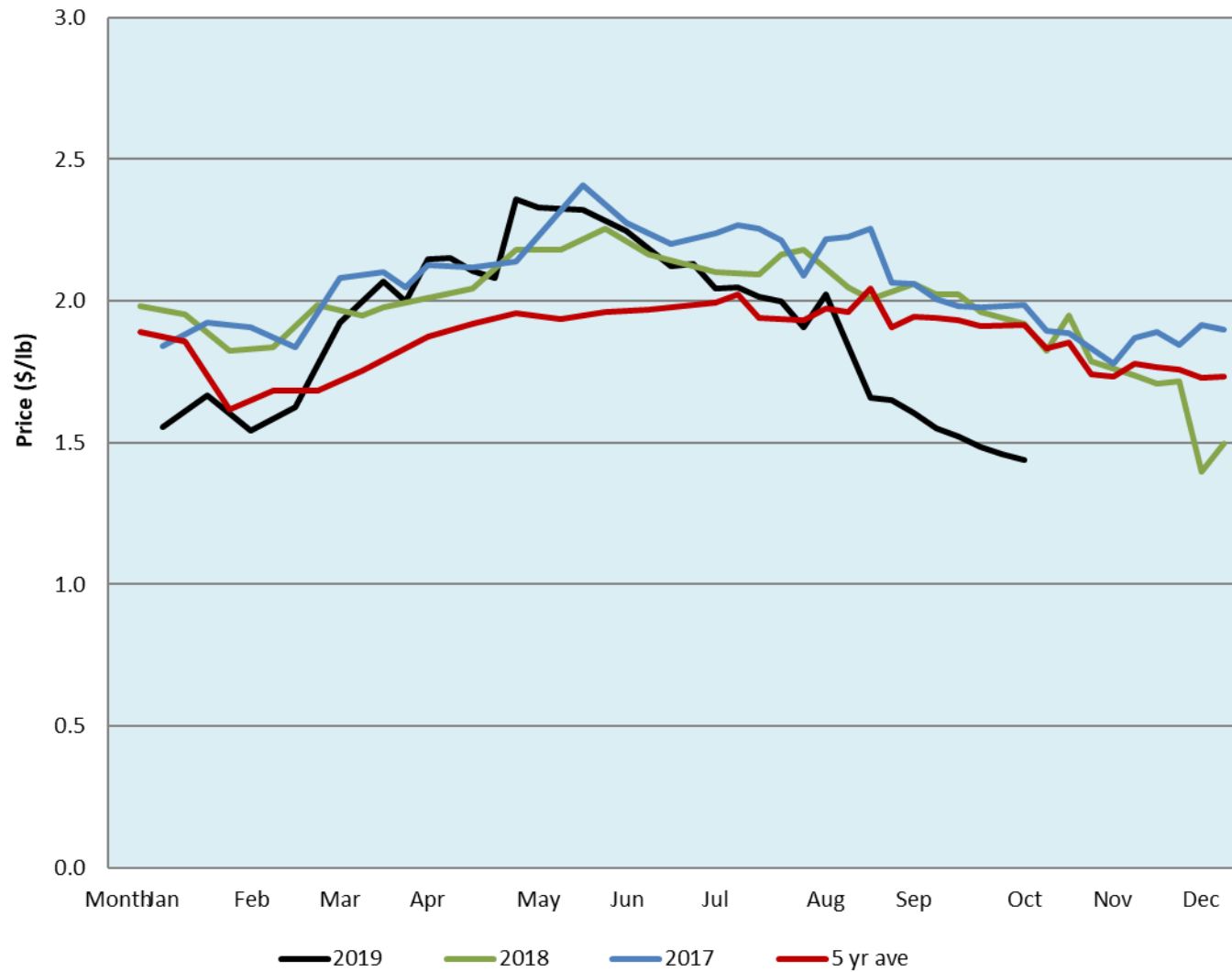


Alberta Live Animal Markets: Visit individual market websites for more information about applicable auction fees and upcoming sales										
Date	Sale	Lambs (\$/lb)		Lambs (\$/lb)		Lambs (\$/lb)		Sheep(\$/lb): Bred ewes \$/hd		Head
		Weight (lbs)	low - high	Weight (lbs)	low - high	Weight (lbs)	low - high		low - high	
No sale this week	Beaver Hill www.beaverhillauctions.com	0-54: wool	- - -	70-85: wool	- - -	86-105:wool	- - -	Ewes: wool	- - -	-
		0-54: hair	- - -			86-105:hair	- - -	Ewes: hair	- - -	
		55-69: wool	- - -	70-85: hair	- - -	106+:wool	- - -	Rams: wool	- - -	
		55-69: hair	- - -			106+:hair	- - -	Rams: hair	- - -	
								Bred Ewes	- - -	
						Ewe&Lamb(s)	- - -			
15-Oct-19	VJV Westlock www.vjvauction.com	0-69: wool	1.52 - 1.70	70-85: wool	1.55 - 1.70	86-105: wool	1.35 - 1.60	Ewes: wool	0.80 - 1.15	545
						86-105: hair	1.30 - 1.50	Ewes: hair	0.80 - 1.00	
		0-69: hair	1.30 - 1.40	70-85: hair	1.30 - 1.60	106+: wool	1.20 - 1.40	Rams: wool	0.80 - 1.25	
						106+: hair	1.20 - 1.30	Rams: hair	- - -	
								Bred Ewes:wool	- - -	
						Ewe&Lamb:hair	- - -			
15-Oct-19	Olds Auction www.oldsauction.com	30-50	1.30 - 1.50	70-80	1.45 - 1.60	90-100	1.20 - 1.40	Ewes	0.85 - 1.20	322 (incl.goats)
		50-60	1.45 - 1.60	80-90	1.30 - 1.50	100-110	1.35 - 1.50	Rams	0.90 - 1.00	
		60-70	1.55 - 1.65			110+	1.35 - 1.50	Bred Ewes	- - -	
12-Oct-19	Picture Butte www.picturebutteauction.ca					Feeder	1.34 - 1.56	Slaughter Ewes	0.76 - 0.88	-
						Slaughter	1.34 - 1.43	Feeder Ewes	- - -	
								Ewe&lamb(s)	- - -	
								Bred ewes	- - -	
								Rams	- - -	
Ontario Live Animal Markets										
15-Oct-19	OSI www.ontariosheep.org	0-50	2.00 - 2.13	65-80	1.96 - 2.40	95-110	1.50 - 2.03	Sheep	1.25 - 1.70	809
		50-64	1.83 - 2.38	80-95	1.90 - 2.20	110+	1.89 - 1.93			
15-Oct-19	OLEX www.ontariosheep.org	0-50	2.60 - 3.15	65-79	2.18 - 2.60	95-109	1.93 - 2.15	Sheep	1.32 - 1.50	1487
		50-64	2.38 - 2.73	80-94	1.96 - 2.23	110+	1.90 - 2.08			
14-Oct-19	Embrun www.ontariosheep.org	0-50	1.05 - 2.12	65-79	2.00 - 2.28	95-109	1.65 - 2.22	Sheep	1.10 - 1.28	250
		50-64	1.72 - 2.15	80-94	1.80 - 2.00	110+	1.79 - 1.79			
10-Oct-19	Brussels www.ontariosheep.org	0-50	1.80 - 1.80	65-79	1.71 - 2.33	95-109	1.93 - 2.26	Sheep	0.96 - 1.30	352
		50-64	1.85 - 2.19	80-94	2.08 - 2.13	110+	1.60 - 1.96			
Alberta Lamb Producers does not endorse individual markets or verify prices provided.										

Trends* in auction price for heavy lambs in Alberta



*Due to differences among auctions, prices are reported as 'trends' rather than averages.
This graph is updated on weeks with two or more markets reporting prices.