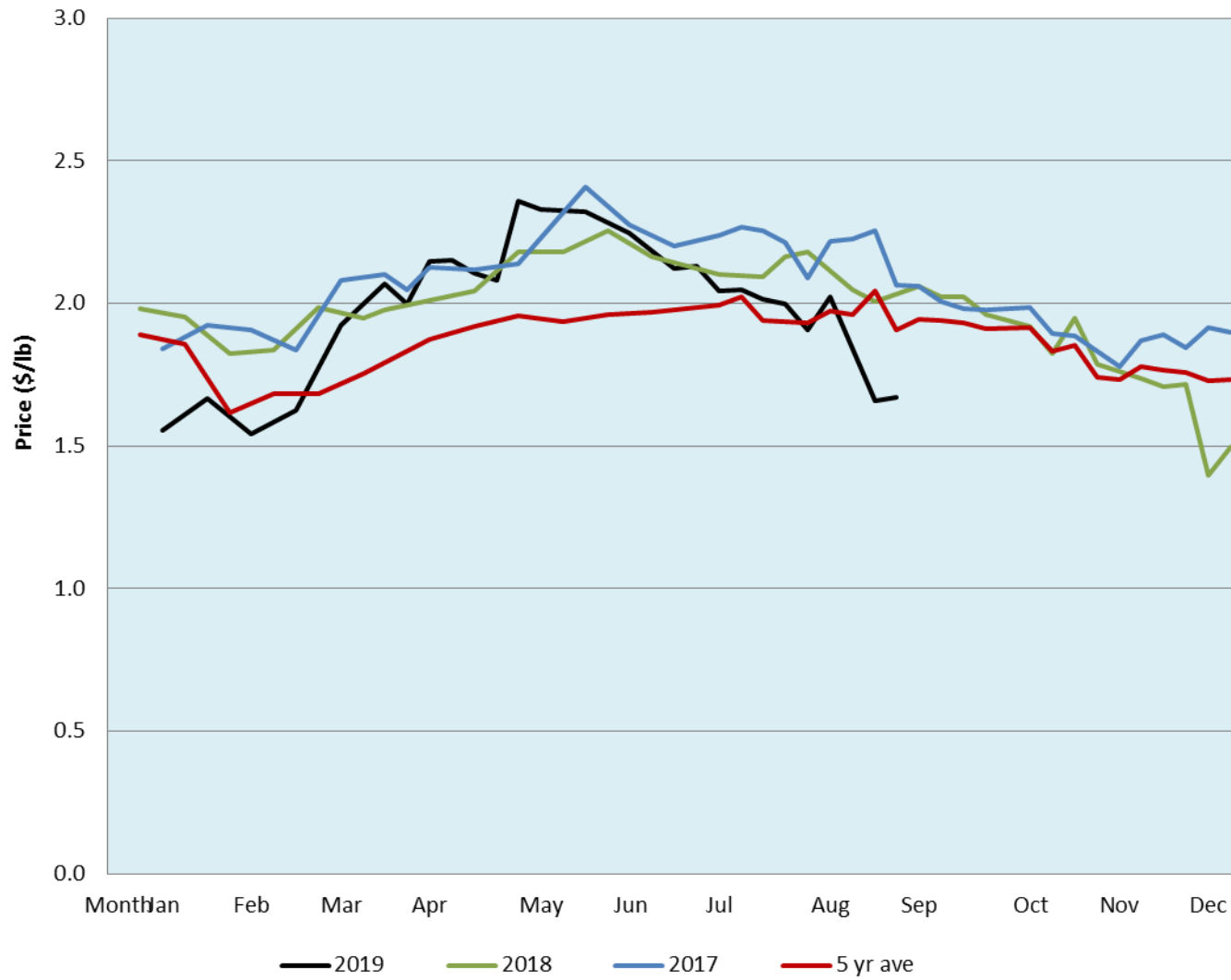


Alberta Live Animal Markets: Visit individual market websites for more information about applicable auction fees and upcoming sales										
Date	Sale	Lambs (\$/lb)		Lambs (\$/lb)		Lambs (\$/lb)		Sheep(\$/lb): Bred ewes \$/hd		Head
		Weight (lbs)	low - high	Weight (lbs)	low - high	Weight (lbs)	low - high		low - high	
No sale this week	Beaver Hill www.beaverhillauctions.com	0-54: wool	- - -	70-85: wool	- - -	86-105:wool	- - -	Ewes: wool	- - -	-
		0-54: hair	- - -			86-105:hair	- - -	Ewes: hair	- - -	
		55-69: wool	- - -	70-85: hair	- - -	106+:wool	- - -	Rams: wool	- - -	
		55-69: hair	- - -			106+:hair	- - -	Rams: hair	- - -	
								Bred Ewes	- - -	
				Ewe&Lamb(s)	- - -					
3-Sep-19	VJV Westlock www.vjvauction.com	0-69: wool	1.45 - 1.70	70-85: wool	1.50 - 1.70	86-105: wool	1.60 - 1.70	Ewes: wool	0.70 - 1.10	302
						86-105: hair	- - -	Ewes: hair	- - -	
		0-69: hair	- - -	70-85: hair	- - -	106+: wool	1.65 - 1.70	Rams: wool	1.00 - 1.65	
						106+: hair	- - -	Rams: hair	0.70 - 0.90	
								Bred Ewes:wool	120 - 120	
3-Sep-19	Olds Auction www.oldsauction.com	30-50	1.00 - 2.00	70-80	1.50 - 1.70	90-100	1.40 - 1.60	Ewes	0.80 - 1.20	227 <small>(incl.goats)</small>
		50-60	1.20 - 1.80	80-90	1.40 - 1.60	100-110	1.50 - 1.65	Rams	1.00 - 1.20	
		60-70	1.50 - 1.80			110+	1.50 - 1.65	Bred Ewes	- - -	
31-Aug-19	Picture Butte www.picturebutteauction.ca					Feeder	1.60 - 1.80	Slaughter Ewes	- - -	-
						Slaughter	1.70 - 1.84	Feeder Ewes	- - -	
								Ewe&lamb(s)	- - -	
								Bred ewes	- - -	
								Rams	- - -	
Ontario Live Animal Markets										
3-Sep-19	OSI www.ontariosheep.org	0-50	2.45 - 2.45	65-80	2.15 - 2.40	95-110	2.01 - 2.19	Sheep	1.55 - 1.85	607
		50-64	2.10 - 2.65	80-95	2.03 - 2.43	110+	1.88 - 2.00			
3-Sep-19	OLEX www.ontariosheep.org	0-50	1.25 - 1.50	65-79	2.15 - 2.50	95-109	1.85 - 2.10	Sheep	1.70 - 1.94	1287
		50-64	2.40 - 3.00	80-94	1.95 - 2.28	110+	1.65 - 2.00			
2-Sep-19	Embrun www.ontariosheep.org	0-50	1.00 - 2.20	65-79	2.22 - 2.67	95-109	1.80 - 2.05	Sheep	1.10 - 1.45	526
		50-64	2.05 - 2.55	80-94	2.15 - 2.65	110+	1.84 - 2.27			
29-Aug-19	Brussels www.ontariosheep.org	0-50	0.10 - 2.55	65-79	2.28 - 2.56	95-109	1.98 - 2.10	Sheep	1.00 - 1.35	467
		50-64	2.30 - 2.67	80-94	1.99 - 2.21	110+	1.90 - 2.01			
Alberta Lamb Producers does not endorse individual markets or verify prices provided.										

Trends* in auction price for heavy lambs in Alberta



*Due to differences among auctions, prices are reported as 'trends' rather than averages. This graph is updated on weeks with two or more markets reporting prices.