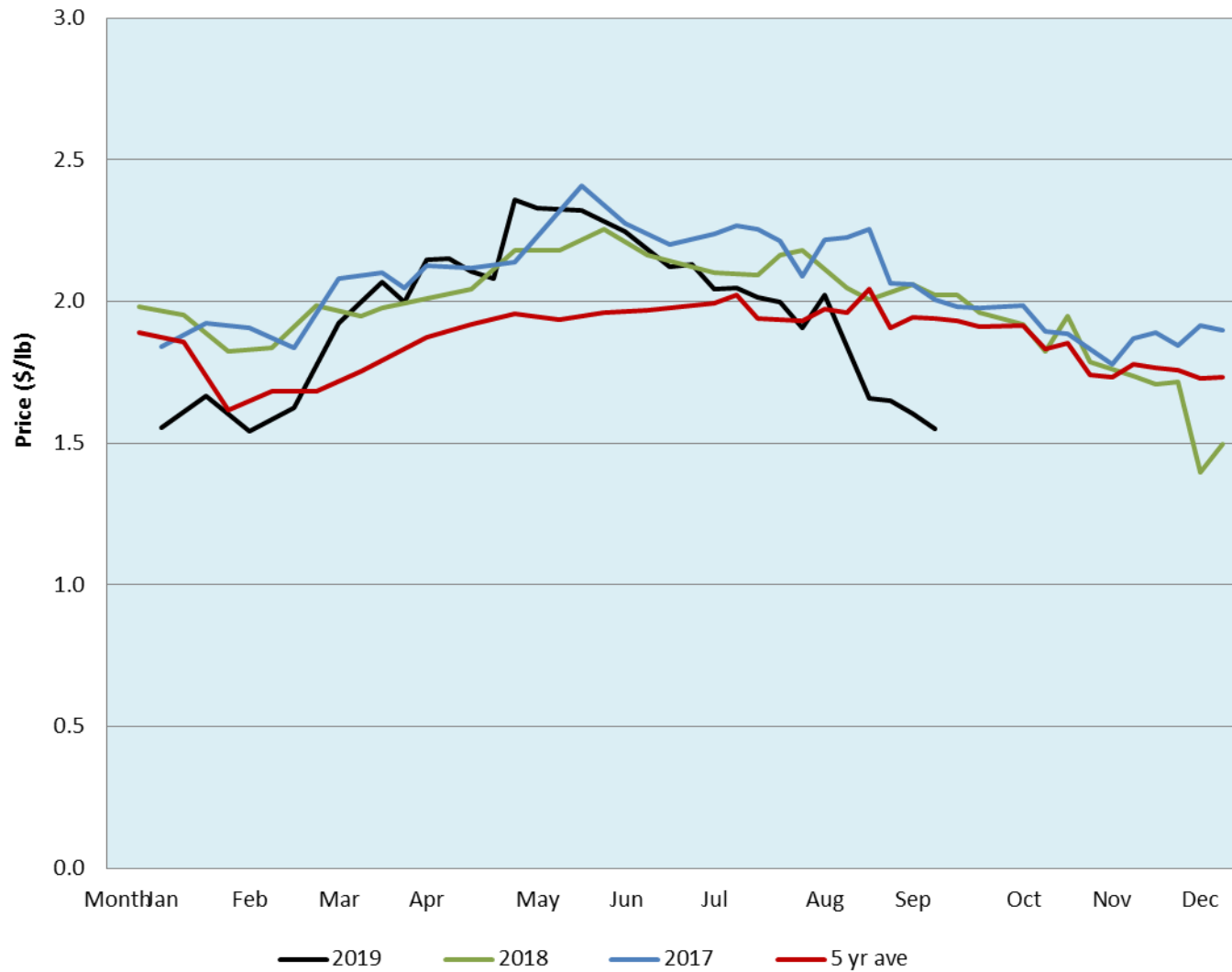


| Alberta Live Animal Markets: Visit individual market websites for more information about applicable auction fees and upcoming sales | | | | | | | | | | |
|-------------------------------------------------------------------------------------------------------------------------------------|---------------------------------------------------------------------------------------------|---------------|-------------|---------------|-------------|---------------|-------------|-------------------------------|-------------|------|
| Date | Sale | Lambs (\$/lb) | | Lambs (\$/lb) | | Lambs (\$/lb) | | Sheep(\$/lb): Bred ewes \$/hd | | Head |
| | | Weight (lbs) | low - high | Weight (lbs) | low - high | Weight (lbs) | low - high | | low - high | |
| 16-Sep-19 | Beaver Hill www.beaverhillauctions.com | 0-54: wool | 1.30 - 1.70 | 70-85: wool | 1.52 - 1.78 | 86-105:wool | 1.51 - 1.70 | Ewes: wool | 0.95 - 1.67 | 1004 |
| | | 0-54: hair | 1.05 - 1.45 | | | 86-105:hair | 1.40 - 1.60 | Ewes: hair | 1.00 - 1.40 | |
| | | 55-69: wool | 1.50 - 1.75 | 70-85: hair | 1.45 - 1.60 | 106+:wool | 1.50 - 1.70 | Rams: wool | 0.90 - 1.30 | |
| | | 55-69: hair | 1.25 - 1.40 | | | 106+:hair | 1.40 - 1.60 | Rams: hair | 0.94 - 1.11 | |
| | | | | | | | | Bred Ewes | 170 - 215 | |
| | | | | | | Ewe&Lamb(s) | - - - | | | |
| 17-Sep-19 | VJV Westlock www.vjvauction.com | 0-69: wool | 1.52 - 1.70 | 70-85: wool | 1.55 - 1.70 | 86-105: wool | 1.50 - 1.60 | Ewes: wool | 0.85 - 1.25 | 470 |
| | | | | | | 86-105: hair | - - - | Ewes: hair | 0.95 - 1.10 | |
| | | 0-69: hair | 1.20 - 1.30 | 70-85: hair | 1.20 - 1.30 | 106+: wool | 1.40 - 1.60 | Rams: wool | 0.95 - 1.00 | |
| | | | | | | 106+: hair | - - - | Rams: hair | - - - | |
| | | | | | | | | Bred Ewes:wool | - - - | |
| | | | | | | | | Ewe&Lamb:hair | - - - | |
| 17-Sep-19 | Olds Auction www.oldsauction.com | 30-50 | 0.90 - 1.50 | 70-80 | 1.40 - 1.60 | 90-100 | 1.30 - 1.50 | Ewes | 0.80 - 1.30 | 452 |
| | | 50-60 | 1.00 - 1.50 | 80-90 | 1.30 - 1.50 | 100-110 | 1.30 - 1.50 | Rams | 1.00 - 1.50 | |
| | | 60-70 | 1.50 - 1.70 | | | 110+ | 1.30 - 1.60 | Bred Ewes | - - - | |
| 14-Sep-19 | Picture Butte www.picturebutteauction.ca | | | | | Feeder | 1.78 - 1.98 | Slaughter Ewes | 0.98 - 1.10 | - |
| | | | | | | Slaughter | 1.58 - 1.63 | Feeder Ewes | 1.00 - 1.15 | |
| | | | | | | | | Ewe&lamb(s) | - - - | |
| | | | | | | | | Bred ewes | - - - | |
| | | | | | | | | Rams | - - - | |
| Ontario Live Animal Markets | | | | | | | | | | |
| 16-Sep-19 | OSI www.ontariosheep.org | 0-50 | 1.50 - 1.90 | 65-80 | 1.80 - 2.43 | 95-110 | 1.85 - 2.13 | Sheep | 1.35 - 1.68 | 1445 |
| | | 50-64 | 1.50 - 2.20 | 80-95 | 1.85 - 2.25 | 110+ | 1.68 - 2.00 | | | |
| 17-Sep-19 | OLEX www.ontariosheep.org | 0-50 | 2.35 - 2.85 | 65-79 | 1.70 - 2.40 | 95-109 | 1.71 - 2.10 | Sheep | 1.38 - 1.68 | 2097 |
| | | 50-64 | 2.40 - 2.75 | 80-94 | 1.78 - 2.20 | 110+ | 1.60 - 1.95 | | | |
| 16-Sep-19 | Embrun www.ontariosheep.org | 0-50 | 1.70 - 1.90 | 65-79 | 2.15 - 2.47 | 95-109 | 2.00 - 2.40 | Sheep | 1.30 - 1.40 | 392 |
| | | 50-64 | 1.85 - 2.30 | 80-94 | 2.00 - 2.28 | 110+ | 1.90 - 2.35 | | | |
| 12-Sep-19 | Brussels www.ontariosheep.org | 0-50 | 1.90 - 2.36 | 65-79 | 1.80 - 2.23 | 95-109 | 1.87 - 1.96 | Sheep | 1.47 - 1.71 | 299 |
| | | 50-64 | 2.09 - 2.20 | 80-94 | 1.86 - 1.99 | 110+ | 1.72 - 1.91 | | | |
| Alberta Lamb Producers does not endorse individual markets or verify prices provided. | | | | | | | | | | |

Trends* in auction price for heavy lambs in Alberta



*Due to differences among auctions, prices are reported as 'trends' rather than averages. This graph is updated on weeks with two or more markets reporting prices.