

Alberta Live Animal Markets: Visit individual market websites for more information about applicable auction fees and upcoming sales

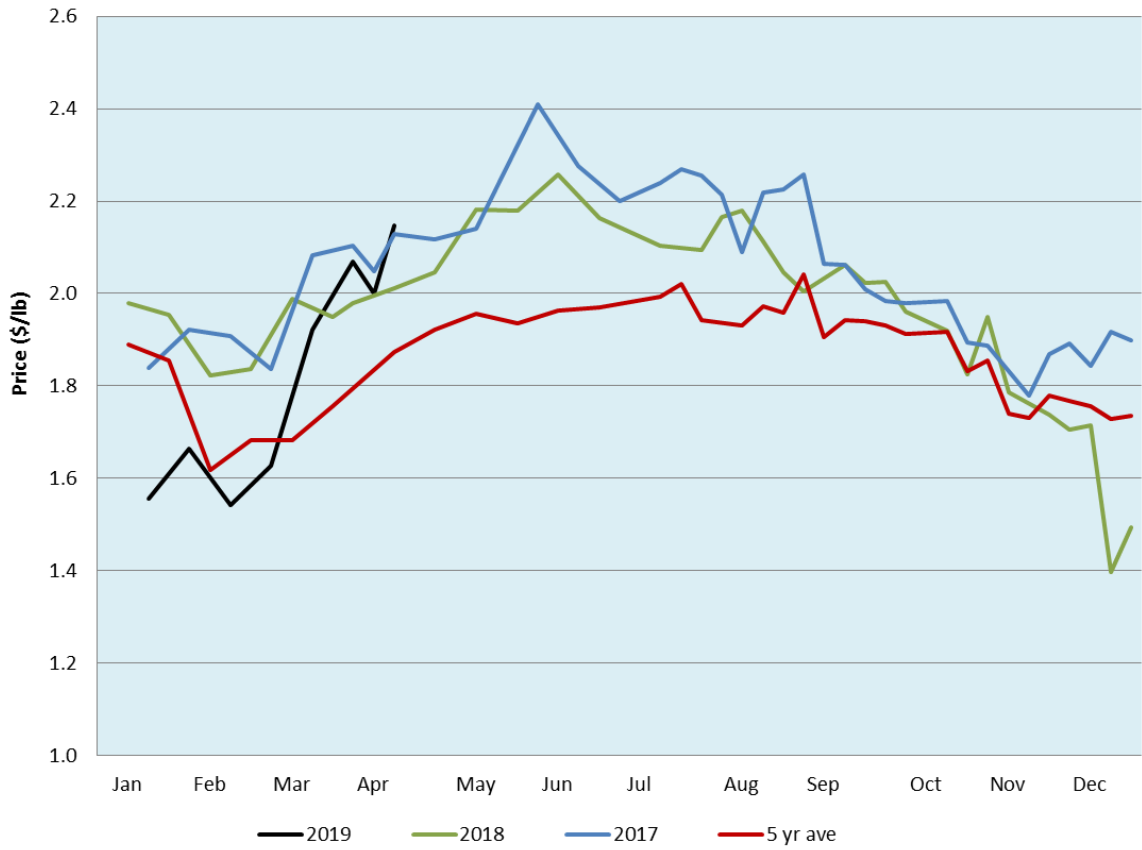
Date	Sale	Lambs (\$/lb)		Lambs (\$/lb)		Lambs (\$/lb)		Sheep(\$/lb): Bred ewes \$/hd		Head	
		Weight (lbs)	low - high	Weight (lbs)	low - high	Weight (lbs)	low - high		low - high		
8-Apr-19	Beaver Hill www.beaverhillauctions.com	0-54: wool	2.50 - 2.87	70-85: wool	2.40 - 3.05	86-105:wool	2.30 - 2.50	Ewes: wool	1.10 - 1.20	963	
		0-54: hair	2.10 - 2.60			86-105:hair	2.12 - 2.35	Ewes: hair	1.10 - 1.40		
		55-69: wool	2.60 - 3.15	70-85: hair	2.30 - 2.75	106+:wool	2.22 - 2.35	Rams: wool	1.10 - 1.25		
		55-69: hair	2.37 - 2.80			106+:hair	1.80 - 2.20	Rams: hair	1.05 - 1.39		
No sale this week	VJV Westlock www.vjvauction.com	0-69: wool	- - -	70-85: wool	- - -	86-105: wool	- - -	Ewes: wool	- - -		-
						86-105: hair	- - -	Rams: wool	- - -		
		0-69: hair	- - -	70-85: hair	- - -	106+: wool	- - -	Rams: hair	- - -		
						106+: hair	- - -	Bred Ewes:wool	- - -		
9-Apr-19	Olds Auction www.oldsauction.com	30-50	2.00 - 2.50	70-80	2.50 - 2.70	90-100	2.30 - 2.50	Ewes	0.90 - 1.20	414	
		50-60	2.50 - 2.70	80-90	2.50 - 2.70	100-110	2.20 - 2.50	Rams	0.90 - 1.20		
		60-70	2.50 - 2.70			110+	1.90 - 2.00	Bred Ewes	- - -		
6-Apr-19	Picture Butte www.picturebutteauction.ca					Feeder	2.93 - 4.32	Slaughter Ewes	1.06 - 1.18	-	
						Slaughter	2.18 - 2.23	Feeder Ewes	1.18 - 1.32		
								Ewe&lamb(s)	- - -		
								Bred ewes	- - -		
							Rams	1.05 - 1.28			

Ontario Live Animal Markets

8-Apr-19	OSI www.ontariosheep.org	0-50	3.78 - 4.18	65-80	2.85 - 3.80	95-110	2.39 - 2.95	Sheep	0.94 - 1.41	1875
		50-64	3.90 - 4.33	80-95	2.48 - 3.20	110+	1.75 - 2.88			
9-Apr-19	OLEX www.ontariosheep.org	0-50	3.50 - 4.30	65-79	3.10 - 3.70	95-109	3.08 - 3.33	Sheep	0.83 - 1.30	2739
		50-64	3.50 - 4.23	80-94	2.80 - 3.35	110+	2.25 - 3.20			
8-Apr-19	Embrun www.ontariosheep.org	0-50	3.25 - 3.62	65-79	2.77 - 3.30	95-109	2.55 - 3.05	Sheep	0.90 - 1.55	470
		50-64	3.34 - 3.60	80-94	2.75 - 3.15	110+	1.35 - 2.30			
4-Apr-19	Brussels www.ontariosheep.org	0-50	3.20 - 4.05	65-79	2.94 - 3.69	95-109	2.65 - 2.71	Sheep	0.83 - 1.17	836
		50-64	3.55 - 4.02	80-94	2.60 - 2.90	110+	1.76 - 2.61			

Alberta Lamb Producers does not endorse individual markets or verify prices provided.

Trends* in auction price for heavy lambs in Alberta



*Due to differences among auctions, prices are reported as 'trends' rather than averages.
This graph is updated on weeks with two or more markets reporting prices.