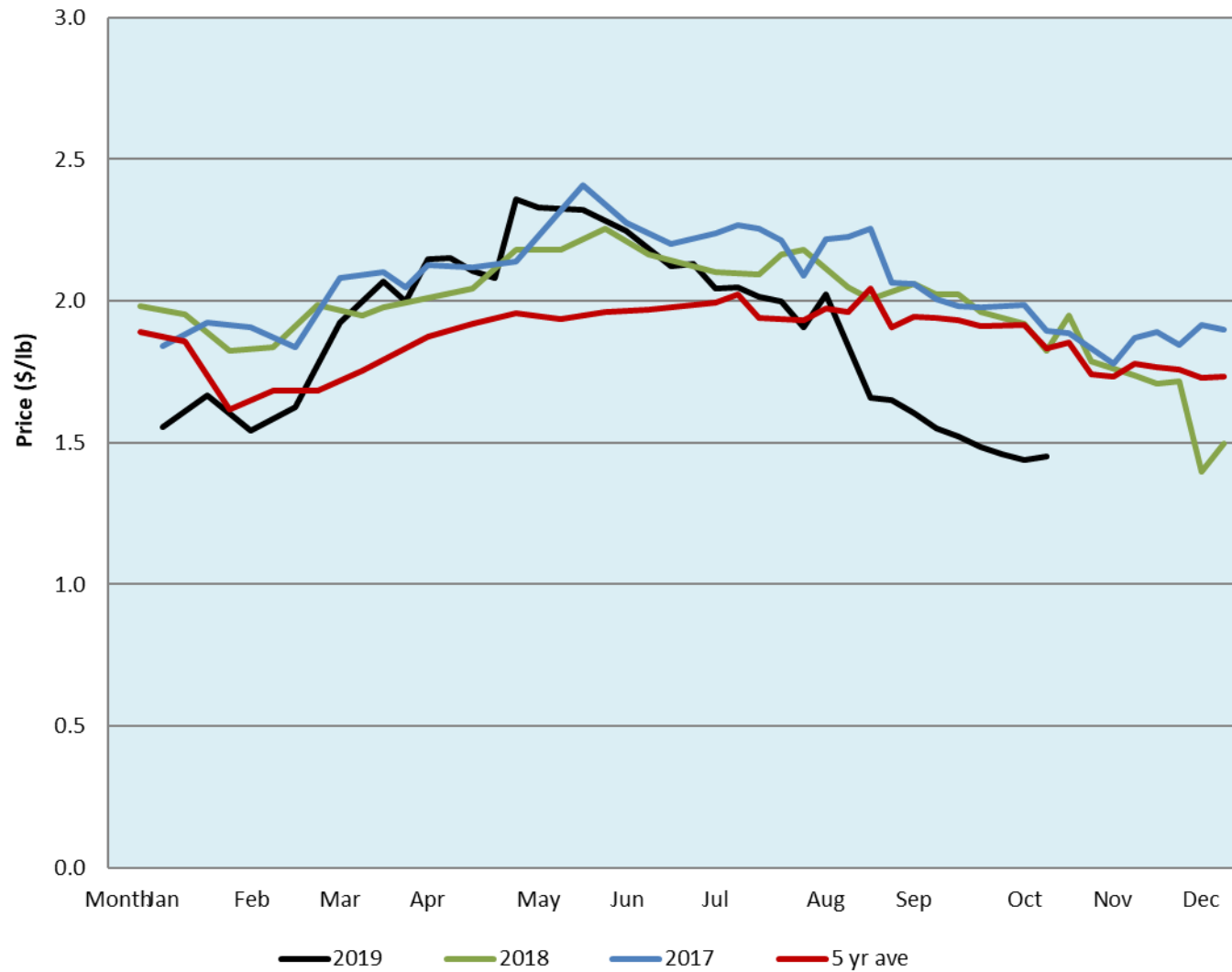


Alberta Live Animal Markets: Visit individual market websites for more information about applicable auction fees and upcoming sales										
Date	Sale	Lambs (\$/lb)		Lambs (\$/lb)		Lambs (\$/lb)		Sheep(\$/lb): Bred ewes \$/hd		Head
		Weight (lbs)	low - high	Weight (lbs)	low - high	Weight (lbs)	low - high		low - high	
21-Oct-19	Beaver Hill www.beaverhillauctions.com	0-54: wool	1.40 - 1.70	70-85: wool	1.40 - 1.76	86-105:wool	1.35 - 1.66	Ewes: wool	0.80 - 1.13	1637
		0-54: hair	1.00 - 1.20			86-105:hair	1.30 - 1.48	Ewes: hair	0.80 - 1.15	
		55-69: wool	1.45 - 1.77	70-85: hair	1.38 - 1.59	106+:wool	1.30 - 1.52	Rams: wool	0.80 - 2.40	
		55-69: hair	1.00 - 1.25			Bred Ewes	180 - 225			
						106+:hair	1.25 - 1.40	Ewe&Lamb(s)	- - -	
No sale this week	VJV Westlock www.vjvauction.com	0-69: wool	- - -	70-85: wool	- - -	86-105: wool	- - -	Ewes: wool	- - -	-
						86-105: hair	- - -	Ewes: hair	- - -	
		0-69: hair	- - -	70-85: hair	- - -	106+: wool	- - -	Rams: wool	- - -	
						106+: hair	- - -	Rams: hair	- - -	
								Bred Ewes:wool	- - -	
22-Oct-19	Olds Auction www.oldsauction.com	30-50	1.00 - 1.50	70-80	1.45 - 1.55	90-100	1.30 - 1.40	Ewes	0.85 - 1.10	320 (incl.goats)
		50-60	1.00 - 1.50	80-90	1.35 - 1.50	100-110	1.30 - 1.40	Rams	0.90 - 1.10	
		60-70	1.50 - 1.70			110+	1.35 - 1.50	Bred Ewes	- - -	
19-Oct-19	Picture Butte www.picturebutteauction.ca					Feeder	1.10 - 1.24	Slaughter Ewes	0.68 - 0.76	-
						Slaughter	1.18 - 1.23	Feeder Ewes	- - -	
								Ewe&lamb(s)	- - -	
								Bred ewes	- - -	
								Rams	- - -	
Ontario Live Animal Markets										
21-Oct-19	OSI www.ontariosheep.org	0-50	1.50 - 2.23	65-80	2.10 - 2.40	95-110	1.88 - 2.00	Sheep	1.78 - 1.49	1092
		50-64	1.75 - 2.35	80-95	1.88 - 2.34	110+	1.78 - 1.85			
22-Oct-19	OLEX www.ontariosheep.org	0-50	2.65 - 3.00	65-79	2.15 - 2.68	95-109	1.60 - 2.08	Sheep	1.05 - 1.50	1700
		50-64	2.25 - 2.83	80-94	1.60 - 2.18	110+	1.70 - 2.00			
21-Oct-19	Embrun www.ontariosheep.org	0-50	1.00 - 2.42	65-79	1.97 - 2.28	95-109	1.77 - 2.17	Sheep	1.16 - 1.35	310
		50-64	2.25 - 2.47	80-94	2.05 - 2.35	110+	1.60 - 1.75			
17-Oct-19	Brussels www.ontariosheep.org	0-50	0.00 - 0.00	65-79	1.70 - 1.96	95-109	1.78 - 1.90	Sheep	1.00 - 1.50	321
		50-64	2.25 - 2.50	80-94	1.70 - 1.90	110+	1.75 - 1.88			
Alberta Lamb Producers does not endorse individual markets or verify prices provided.										

Trends* in auction price for heavy lambs in Alberta



*Due to differences among auctions, prices are reported as 'trends' rather than averages. This graph is updated on weeks with two or more markets reporting prices.