

Alberta Live Animal Markets: Visit individual market websites for more information about applicable auction fees and upcoming sales

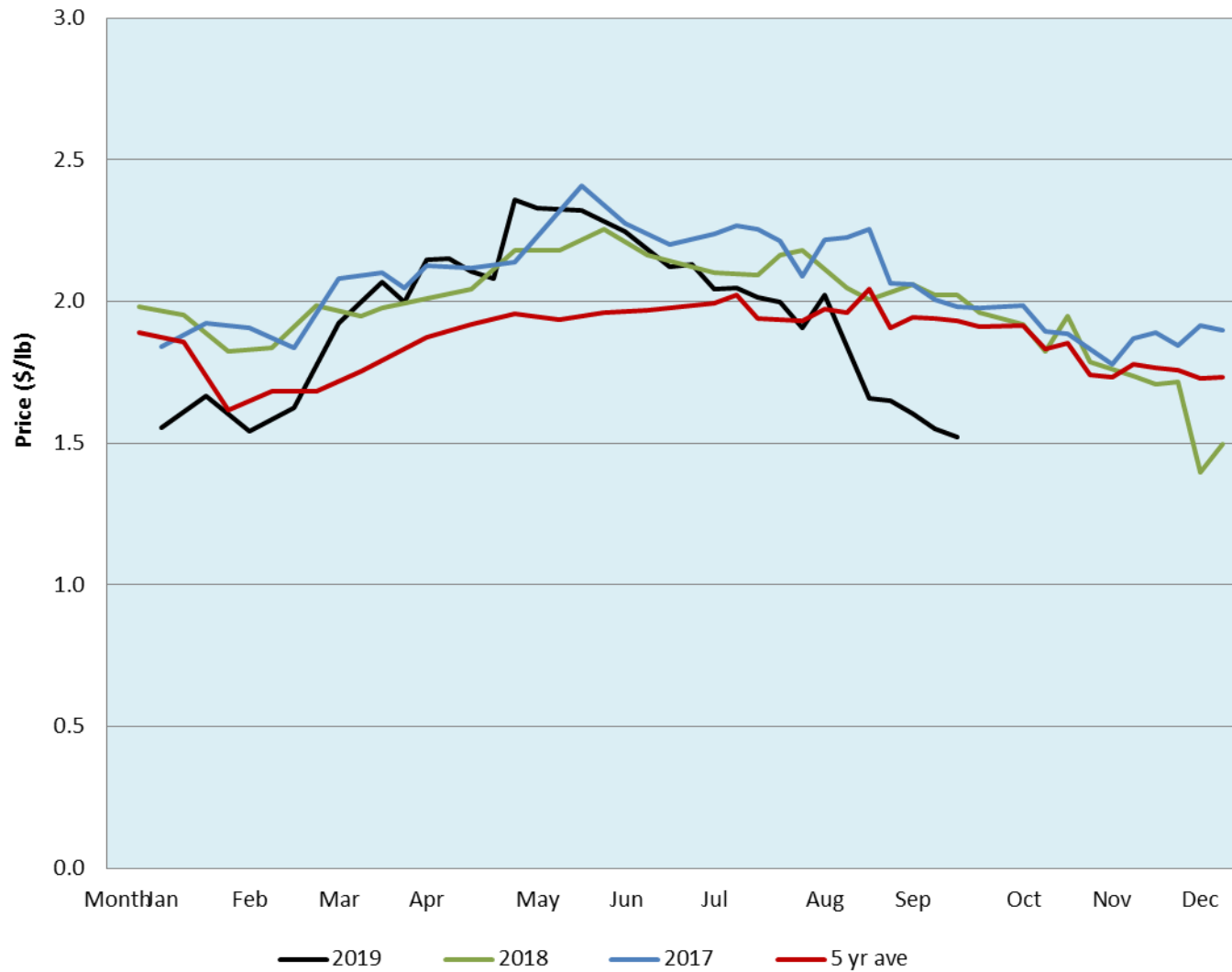
Date	Sale	Lambs (\$/lb)		Lambs (\$/lb)		Lambs (\$/lb)		Sheep(\$/lb): Bred ewes \$/hd		Head
		Weight (lbs)	low - high	Weight (lbs)	low - high	Weight (lbs)	low - high		low - high	
23-Sep-19	Beaver Hill www.beaverhillauctions.com	0-54: wool	1.20 - 1.70	70-85: wool	1.45 - 1.65	86-105:wool	1.45 - 1.65	Ewes: wool	0.95 - 1.37	1063
		0-54: hair	1.20 - 1.45			86-105:hair	1.35 - 1.50	Ewes: hair	0.90 - 1.30	
		55-69: wool	1.50 - 1.75	70-85: hair	1.25 - 1.40	106+:wool	1.40 - 1.80	Rams: wool	0.97 - 1.32	
		55-69: hair	1.25 - 1.60			Bred Ewes	190 - 225			
						106+:hair	1.30 - 1.55	Ewe&Lamb(s)	- - -	
No sale this week	VJV Westlock www.vjvauction.com	0-69: wool	- - -	70-85: wool	- - -	86-105: wool	- - -	Ewes: wool	- - -	470
						86-105: hair	- - -	Ewes: hair	- - -	
		0-69: hair	- - -	70-85: hair	- - -	106+: wool	- - -	Rams: wool	- - -	
						106+: hair	- - -	Rams: hair	- - -	
								Bred Ewes:wool	- - -	
24-Sep-19	Olds Auction www.oldsauction.com	30-50	0.90 - 1.50	70-80	1.40 - 1.60	90-100	1.30 - 1.50	Ewes	0.85 - 1.20	382
		50-60	1.00 - 1.50	80-90	1.30 - 1.50	100-110	1.30 - 1.50	Rams	1.00 - 1.10	
		60-70	1.50 - 1.70			110+	1.30 - 1.60	Bred Ewes	- - -	
17-Sep-19	Picture Butte www.picturebutteauction.ca					Feeder	1.59 - 1.78	Slaughter Ewes	0.89 - 0.90	-
						Slaughter	1.59 - 1.63	Feeder Ewes	- - -	
								Ewe&lamb(s)	- - -	
								Bred ewes	- - -	
								Rams	- - -	

Ontario Live Animal Markets

23-Sep-19	OSI www.ontariosheep.org	0-50	1.55 - 1.65	65-80	1.68 - 2.23	95-110	1.90 - 2.04	Sheep	1.28 - 1.50	1283
		50-64	1.78 - 2.48	80-95	1.76 - 2.55	110+	1.60 - 1.75			
24-Sep-19	OLEX www.ontariosheep.org	0-50	2.00 - 2.50	65-79	1.88 - 2.20	95-109	1.65 - 1.90	Sheep	1.15 - 1.53	2623
		50-64	1.87 - 2.28	80-94	1.60 - 1.89	110+	1.63 - 1.95			
23-Sep-19	Embrun www.ontariosheep.org	0-50	1.02 - 1.82	65-79	1.62 - 2.20	95-109	1.42 - 1.95	Sheep	1.14 - 1.33	443
		50-64	1.74 - 2.45	80-94	1.62 - 2.05	110+	1.65 - 1.65			
19-Sep-19	Brussels www.ontariosheep.org	0-50	1.50 - 1.50	65-79	1.80 - 2.41	95-109	1.70 - 1.93	Sheep	1.41 - 1.72	299
		50-64	1.90 - 2.16	80-94	1.80 - 2.14	110+	1.75 - 1.90			

Alberta Lamb Producers does not endorse individual markets or verify prices provided.

Trends* in auction price for heavy lambs in Alberta



*Due to differences among auctions, prices are reported as 'trends' rather than averages. This graph is updated on weeks with two or more markets reporting prices.