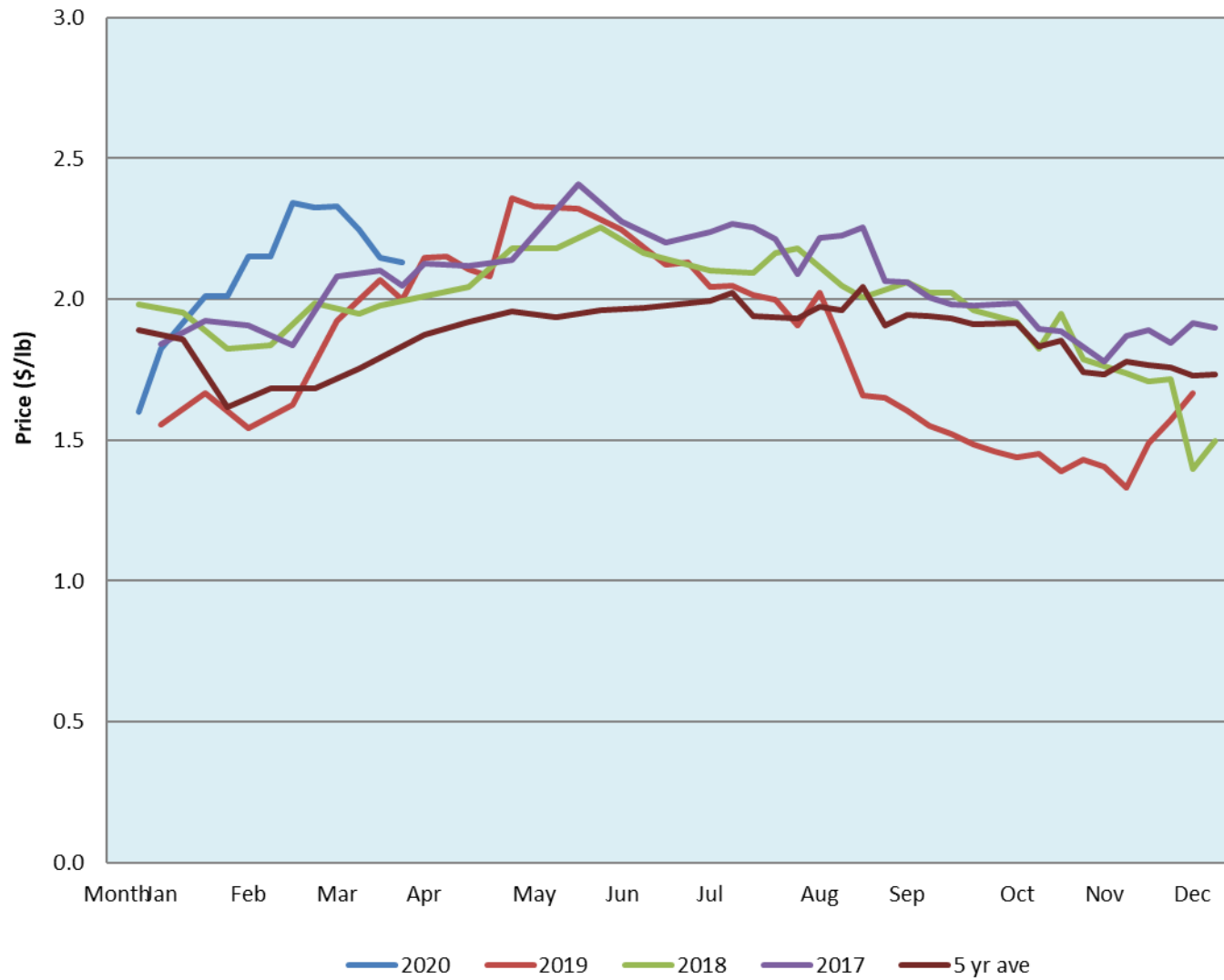


Alberta Live Animal Markets: Visit individual market websites for more information about applicable auction fees and upcoming sales										
Date	Sale	Lambs (\$/lb)		Lambs (\$/lb)		Lambs (\$/lb)		Sheep(\$/lb): Bred ewes \$/hd		Head
		Weight (lbs)	low - high	Weight (lbs)	low - high	Weight (lbs)	low - high		low - high	
30-Mar-20	Beaver Hill www.beaverhillauctions.com	0-54: wool	2.00 - 2.45	70-85: wool	2.40 - 2.69	86-105:wool	2.04 - 2.79	Ewes: wool	1.00 - 1.70	372
		0-54: hair	1.60 - 2.30			86-105:hair	2.00 - 2.58	Ewes: hair	1.15 - 1.75	
		55-69: wool	2.15 - 2.68	70-85: hair	2.25 - 2.54	106+:wool	2.04 - 2.17	Rams: wool	1.10 - 1.75	
		55-69: hair	1.80 - 2.48			106+:hair	1.90 - 2.05	Rams: hair	1.20 - 1.70	
								Bred Ewes	3 - 3	
						Ewe&Lamb(s)	3 - 3			
No sale this week	VJV Westlock www.vjvauction.com	0-69: wool	- - -	70-85: wool	- - -	86-105: wool	- - -	Ewes: wool	- - -	-
						86-105: hair	- - -	Ewes: hair	- - -	
		0-69: hair	- - -	70-85: hair	- - -	106+: wool	- - -	Rams: wool	- - -	
						106+: hair	- - -	Rams: hair	- - -	
								Bred Ewes:wool	- - -	
								Ewe&Lamb:hair	- - -	
31-Mar-20	Olds Auction www.oldsauction.com	30-50	2.25 - 2.45	70-80	2.20 - 2.65	90-100	2.10 - 2.35	Ewes	1.00 - 1.50	136 (incl.goats)
		50-60	2.25 - 2.60	80-90	2.10 - 2.45	100-110	2.05 - 2.20	Rams	1.00 - 1.80	
		60-70	2.25 - 2.65			110+	0.85 - 1.80	Bred Ewes	- - -	
26-Mar-20	Picture Butte www.picturebutteauction.ca					Feeder	2.32 - 2.54	Slaughter Ewes	1.04 - 1.23	-
						Slaughter	2.08 - 2.24	Feeder Ewes	- - -	
								Ewe&lamb(s)	- - -	
								Bred ewes	- - -	
								Rams	- - -	
Ontario Live Animal Markets										
30-Mar-20	OSI www.ontariosheep.org	0-50	2.30 - 2.80	65-80	2.05 - 2.70	95-110	1.60 - 2.03	Sheep	1.19 - 1.43	1082
		50-64	2.48 - 2.88	80-95	2.00 - 2.90	110+	1.83 - 2.03			
31-Mar-20	OLEX www.ontariosheep.org	0-50	2.80 - 3.95	65-79	2.38 - 2.90	95-109	2.30 - 2.53	Sheep	0.75 - 1.22	2003
		50-64	2.32 - 3.18	80-94	2.45 - 2.85	110+	2.00 - 2.15			
30-Mar-20	Embrun www.ontariosheep.org	0-50	2.00 - 2.62	65-79	2.30 - 2.58	95-109	2.35 - 2.60	Sheep	0.75 - 1.07	446
		50-64	2.40 - 2.68	80-94	2.47 - 2.75	110+	2.00 - 2.30			
26-Mar-20	Brussels www.ontariosheep.org	0-50	2.85 - 3.38	65-79	2.45 - 2.96	95-109	1.95 - 2.07	Sheep	1.00 - 1.50	529
		50-64	2.69 - 3.05	80-94	2.00 - 2.26	110+	1.96 - 2.03			
Alberta Lamb Producers does not endorse individual markets or verify prices provided.										

Trends* in auction price for heavy lambs in Alberta



*Due to differences among auctions, prices are reported as 'trends' rather than averages.
This graph is updated on weeks with two or more markets reporting prices.