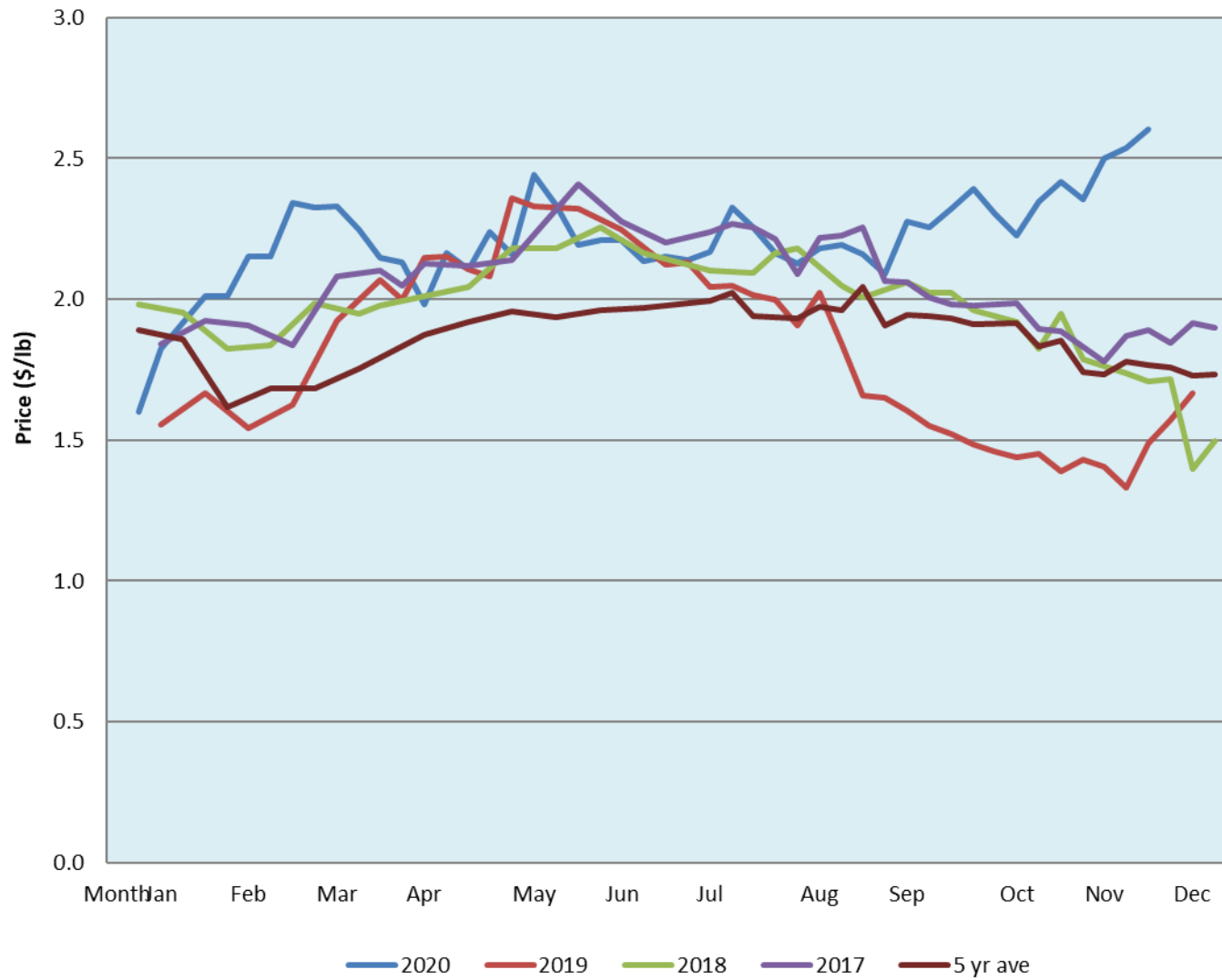


Alberta Live Animal Markets: Visit individual market websites for more information about applicable auction fees and upcoming sales										
Date	Sale	Lambs (\$/lb)		Lambs (\$/lb)		Lambs (\$/lb)		Sheep(\$/lb): Bred ewes \$/hd		Head
		Weight (lbs)	low - high	Weight (lbs)	low - high	Weight (lbs)	low - high		low - high	
30-Nov-20	Beaver Hill www.beaverhillauctions.com	0-54: wool	2.60 - 3.25	70-85: wool	2.80 - 3.40	86-105:wool	2.76 - 3.16	Ewes: wool	1.71 - 2.15	516
		0-54: hair	2.50 - 2.90			86-105:hair	2.60 - 2.95	Ewes: hair	1.71 - 2.21	
		55-69: wool	2.90 - 3.40	70-85: hair	2.75 - 3.20	106+:wool	2.55 - 2.82	Rams: wool	1.60 - 1.80	
		55-69: hair	2.80 - 3.00			Bred Ewes	2.80 - 3.65			
						106+:hair	2.55 - 2.65	Ewe&Lamb(s)	- - -	
No sale this week	VJV Westlock www.vjvauction.com	0-69: wool	- - -	70-85: wool	- - -	86-105: wool	- - -	Ewes: wool	- - -	-
						86-105: hair	- - -	Ewes: hair	- - -	
		0-69: hair	- - -	70-85: hair	- - -	106+: wool	- - -	Rams: wool	- - -	
						106+: hair	- - -	Rams: hair	- - -	
								Bred Ewes:wool	- - -	
1-Dec-20	Olds Auction www.oldsauction.com	30-50	1.20 - 1.70	70-80	2.50 - 2.81	90-100	2.68 - 2.75	Ewes	1.20 - 1.75	219 (incl.goats)
		50-60	1.40 - 2.25	80-90	2.50 - 2.75	100-110	2.61 - 2.70	Rams	1.40 - 2.05	
		60-70	2.00 - 3.10			110+	2.61 - 2.70	Bred Ewes	- - -	
28-Nov-20	Picture Butte www.picturebutteauction.ca					Feeder	2.50 - 2.81	Slaughter Ewes	1.02 - 1.63	-
						Slaughter	2.44 - 2.50	Feeder Ewes	- - -	
								Ewe&lamb(s)	- - -	
								Bred ewes	- - -	
								Rams	- - -	
Ontario Live Animal Markets										
30-Nov-20	OSI www.ontariosheep.org	0-50	3.05 - 3.85	65-80	3.25 - 3.78	95-110	2.58 - 2.97	Sheep	1.50 - 2.90	826
		50-64	3.40 - 4.08	80-95	2.68 - 2.90	110+	2.40 - 2.85			
1-Dec-20	OLEX www.ontariosheep.org	0-50	4.00 - 4.55	65-79	3.33 - 3.99	95-109	2.70 - 3.08	Sheep	1.70 - 3.08	1929
		50-64	3.88 - 4.18	80-94	2.80 - 3.40	110+	2.54 - 2.78			
30-Nov-20	Embrun www.ontariosheep.org	0-50	3.85 - 4.10	65-79	3.32 - 3.52	95-109	2.82 - 3.10	Sheep	2.20 - 2.72	487
		50-64	3.35 - 3.60	80-94	3.15 - 3.47	110+	2.60 - 2.82			
26-Nov-20	Brussels www.ontariosheep.org	0-50	1.70 - 4.45	65-79	3.40 - 4.27	95-109	2.77 - 3.27	Sheep	1.65 - 3.25	326
		50-64	4.42 - 4.46	80-94	3.18 - 3.66	110+	2.70 - 3.15			
Alberta Lamb Producers does not endorse individual markets or verify prices provided.										

Trends* in auction price for heavy lambs in Alberta



*Due to differences among auctions, prices are reported as 'trends' rather than averages.
 This graph is updated on weeks with two or more markets reporting prices.