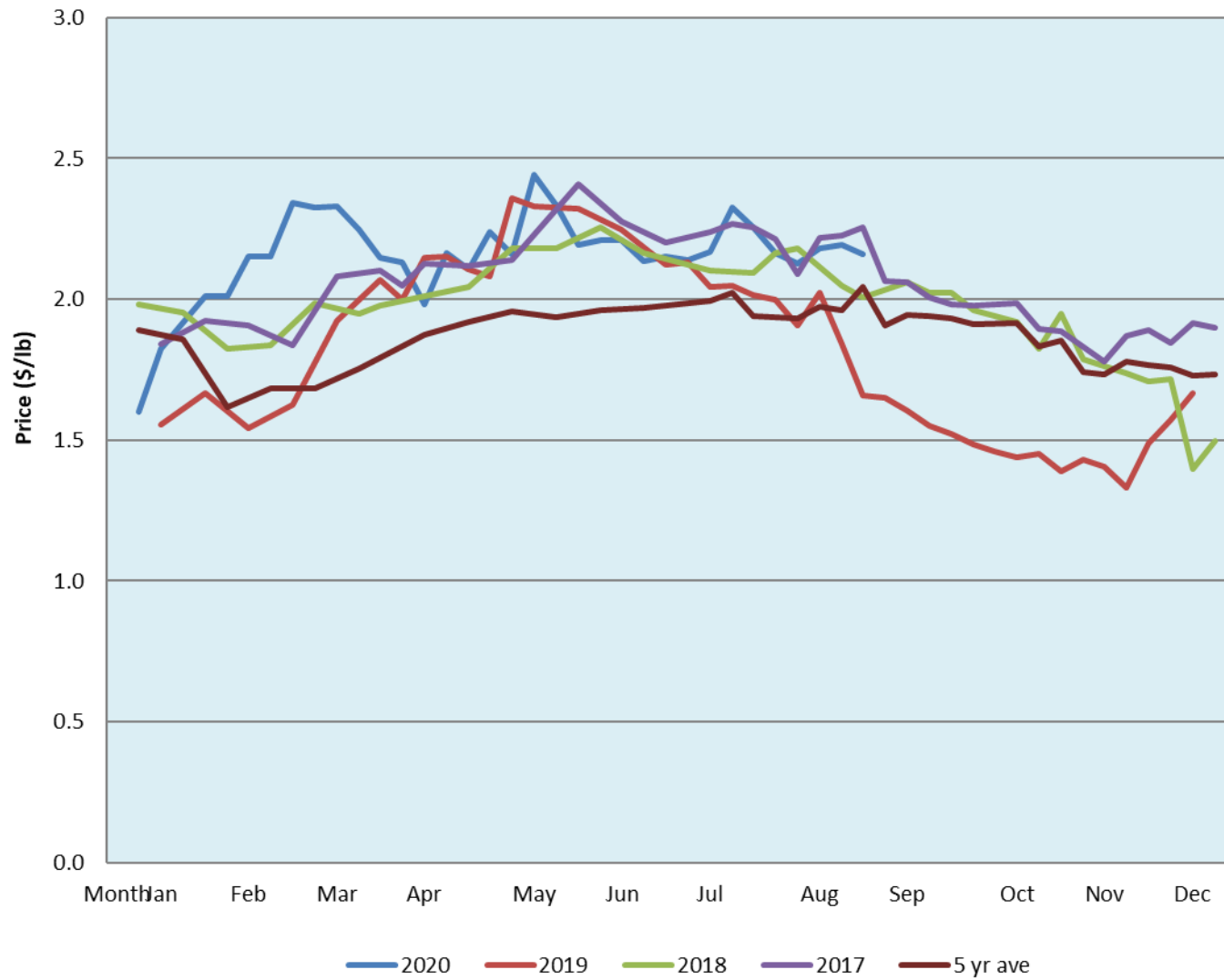


Alberta Live Animal Markets: Visit individual market websites for more information about applicable auction fees and upcoming sales										
Date	Sale	Lambs (\$/lb)		Lambs (\$/lb)		Lambs (\$/lb)		Sheep(\$/lb): Bred ewes \$/hd		Head
		Weight (lbs)	low - high	Weight (lbs)	low - high	Weight (lbs)	low - high		low - high	
31-Aug-20	Beaver Hill www.beaverhillauctions.com	0-54: wool	1.90 - 2.36	70-85: wool	2.12 - 2.40	86-105:wool	2.15 - 2.43	Ewes: wool	1.45 - 1.92	1476
		0-54: hair	1.80 - 2.25			86-105:hair	2.19 - 2.38	Ewes: hair	1.57 - 2.15	
		55-69: wool	2.07 - 2.32	70-85: hair	2.05 - 2.30	106+:wool	2.20 - 2.36	Rams: wool	1.42 - 1.70	
		55-69: hair	1.80 - 2.20			106+:hair	2.17 - 2.30	Rams: hair	1.40 - 1.80	
								Bred Ewes	2 - 3	
						Ewe&Lamb(s)	- - -			
No sale this week	VJV Westlock www.vjvauction.com	0-69: wool	- - -	70-85: wool	- - -	86-105: wool	- - -	Ewes: wool	- - -	-
						86-105: hair	- - -	Ewes: hair	- - -	
		0-69: hair	- - -	70-85: hair	- - -	106+: wool	- - -	Rams: wool	- - -	
						106+: hair	- - -	Rams: hair	- - -	
								Bred Ewes:wool	- - -	
								Ewe&Lamb:hair	- - -	
1-Sep-20	Olds Auction www.oldsauction.com	30-50	2.12 - 2.44	70-80	2.08 - 2.53	90-100	1.71 - 2.14	Ewes	1.61 - 1.88	462 <small>(incl.goats)</small>
		50-60	1.92 - 2.22	80-90	2.03 - 2.05	100-110	1.88 - 2.21	Rams	1.54 - 1.95	
		60-70	1.96 - 2.81			110+	1.87 - 2.00	Bred Ewes	- - -	
29-Aug-20	Picture Butte www.picturebutteauction.ca					Feeder	2.18 - 2.24	Slaughter Ewes	1.06 - 1.20	-
						Slaughter	2.10 - 2.21	Feeder Ewes	- - -	
								Ewe&lamb(s)	- - -	
								Bred ewes	- - -	
								Rams	- - -	
Ontario Live Animal Markets										
31-Aug-20	OSI www.ontariosheep.org	0-50	2.75 - 2.80	65-80	2.58 - 2.88	95-110	2.55 - 2.65	Sheep	1.79 - 2.20	1383
		50-64	2.50 - 2.73	80-95	2.50 - 2.68	110+	2.41 - 2.69			
1-Sep-20	OLEX www.ontariosheep.org	0-50	2.50 - 3.70	65-79	2.75 - 3.35	95-109	2.60 - 2.88	Sheep	1.88 - 2.18	1621
		50-64	2.70 - 3.63	80-94	2.68 - 2.93	110+	2.30 - 2.80			
31-Aug-20	Embrun www.ontariosheep.org	0-50	1.15 - 2.95	65-79	2.58 - 2.92	95-109	2.50 - 2.77	Sheep	1.80 - 2.00	576
		50-64	2.50 - 3.02	80-94	2.52 - 2.85	110+	1.70 - 1.85			
27-Aug-20	Brussels www.ontariosheep.org	0-50	1.95 - 2.71	65-79	2.65 - 2.93	95-109	2.77 - 2.80	Sheep	1.80 - 2.35	491
		50-64	2.59 - 2.93	80-94	2.70 - 2.82	110+	2.75 - 2.78			
Alberta Lamb Producers does not endorse individual markets or verify prices provided.										

Trends* in auction price for heavy lambs in Alberta



*Due to differences among auctions, prices are reported as 'trends' rather than averages.
 This graph is updated on weeks with two or more markets reporting prices.