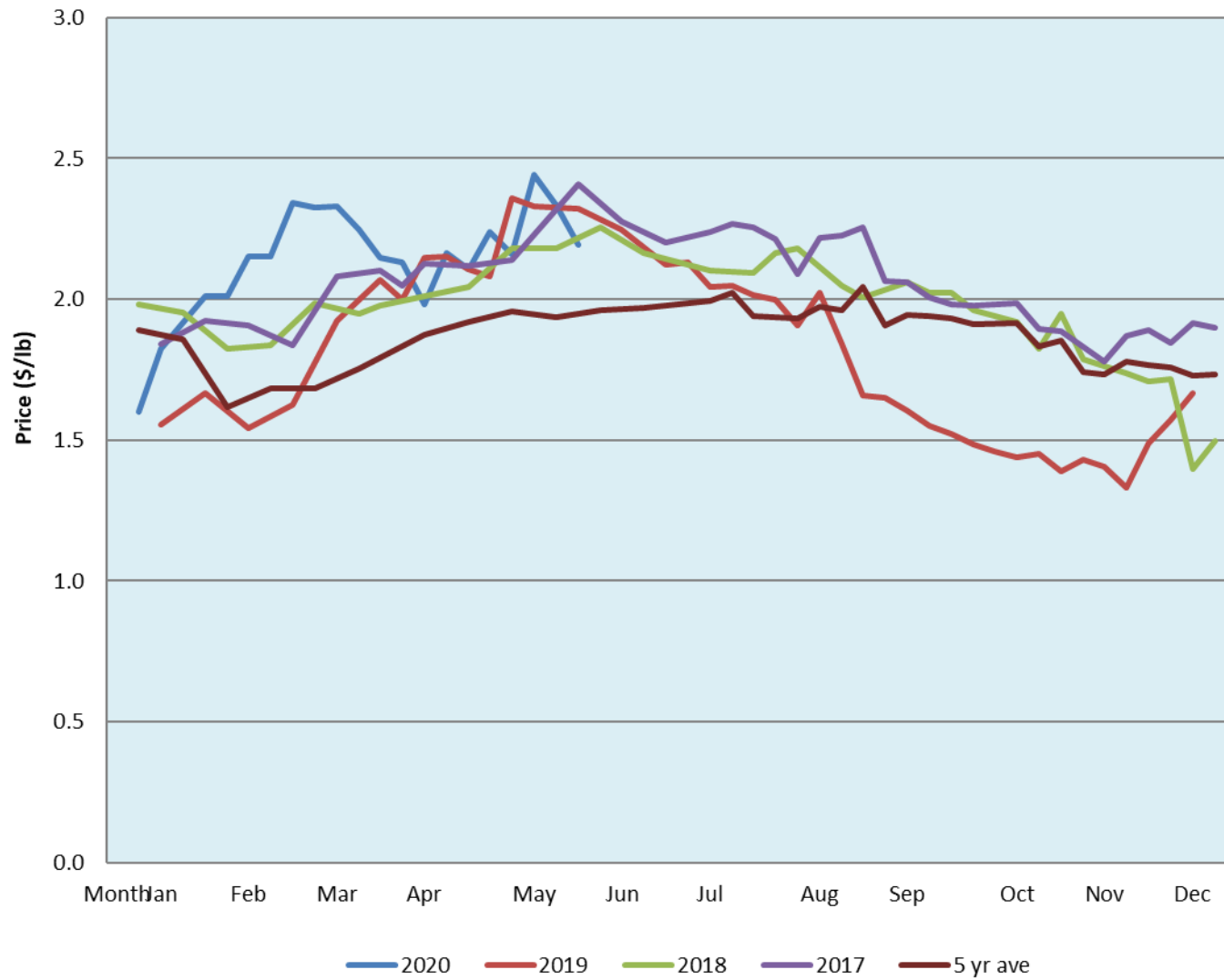


Alberta Live Animal Markets: Visit individual market websites for more information about applicable auction fees and upcoming sales										
Date	Sale	Lambs (\$/lb)		Lambs (\$/lb)		Lambs (\$/lb)		Sheep(\$/lb): Bred ewes \$/hd		Head
		Weight (lbs)	low - high	Weight (lbs)	low - high	Weight (lbs)	low - high		low - high	
1-Jun-20	Beaver Hill www.beaverhillauctions.com	0-54: wool	2.20 - 2.60	70-85: wool	2.30 - 2.60	86-105:wool	2.20 - 2.53	Ewes: wool	1.10 - 1.87	589
		0-54: hair	2.00 - 2.40			86-105:hair	2.10 - 2.40	Ewes: hair	1.20 - 1.50	
		55-69: wool	2.30 - 2.66	70-85: hair	2.20 - 2.50	106+:wool	2.20 - 2.27	Rams: wool	1.10 - 1.26	
		55-69: hair	2.00 - 2.45			106+:hair	2.00 - 2.10	Rams: hair	1.00 - 1.60	
								Bred Ewes	- - -	
						Ewe&Lamb(s)	3 - 4			
No sale this week	VJV Westlock www.vjvauction.com	0-69: wool	- - -	70-85: wool	- - -	86-105: wool	- - -	Ewes: wool	- - -	-
						86-105: hair	- - -	Ewes: hair	- - -	
		0-69: hair	- - -	70-85: hair	- - -	106+: wool	- - -	Rams: wool	- - -	
						106+: hair	- - -	Rams: hair	- - -	
								Bred Ewes:wool	- - -	
						Ewe&Lamb:hair	- - -			
2-Jun-20	Olds Auction www.oldsauction.com	30-50	3.00 - 3.37	70-80	2.35 - 2.40	90-100	2.20 - 2.30	Ewes	1.25 - 1.55	122 (incl.goats)
		50-60	3.00 - 3.32	80-90	2.20 - 2.40	100-110	2.10 - 2.20	Rams	0.95 - 1.35	
		60-70	2.35 - 2.42			110+	2.10 - 2.20	Bred Ewes	- - -	
Information unavailable	Picture Butte www.picturebutteauction.ca					Feeder	- - -	Slaughter Ewes	- - -	-
						Slaughter	- - -	Feeder Ewes	- - -	
								Ewe&lamb(s)	- - -	
								Bred ewes	- - -	
								Rams	- - -	
Ontario Live Animal Markets										
1-Jun-20	OSI www.ontariosheep.org	0-50	1.73 - 3.15	65-80	2.60 - 3.15	95-110	2.38 - 2.60	Sheep	1.13 - 1.60	1155
		50-64	2.45 - 3.40	80-95	2.30 - 2.60	110+	2.43 - 2.50			
2-Jun-20	OLEX www.ontariosheep.org	0-50	2.85 - 3.08	65-79	2.58 - 3.00	95-109	2.45 - 2.63	Sheep	1.20 - 1.58	1858
		50-64	2.60 - 2.90	80-94	2.40 - 2.63	110+	2.30 - 2.41			
1-Jun-20	Embrun www.ontariosheep.org	0-50	2.65 - 3.25	65-79	2.75 - 2.95	95-109	2.68 - 2.87	Sheep	1.17 - 1.50	305
		50-64	2.75 - 2.95	80-94	2.72 - 2.90	110+	2.35 - 2.75			
28-May-20	Brussels www.ontariosheep.org	0-50	2.57 - 2.88	65-79	2.50 - 2.88	95-109	2.39 - 2.57	Sheep	0.85 - 1.59	528
		50-64	2.66 - 3.02	80-94	2.44 - 2.60	110+	2.11 - 2.47			
Alberta Lamb Producers does not endorse individual markets or verify prices provided.										

Trends* in auction price for heavy lambs in Alberta



*Due to differences among auctions, prices are reported as 'trends' rather than averages.
 This graph is updated on weeks with two or more markets reporting prices.