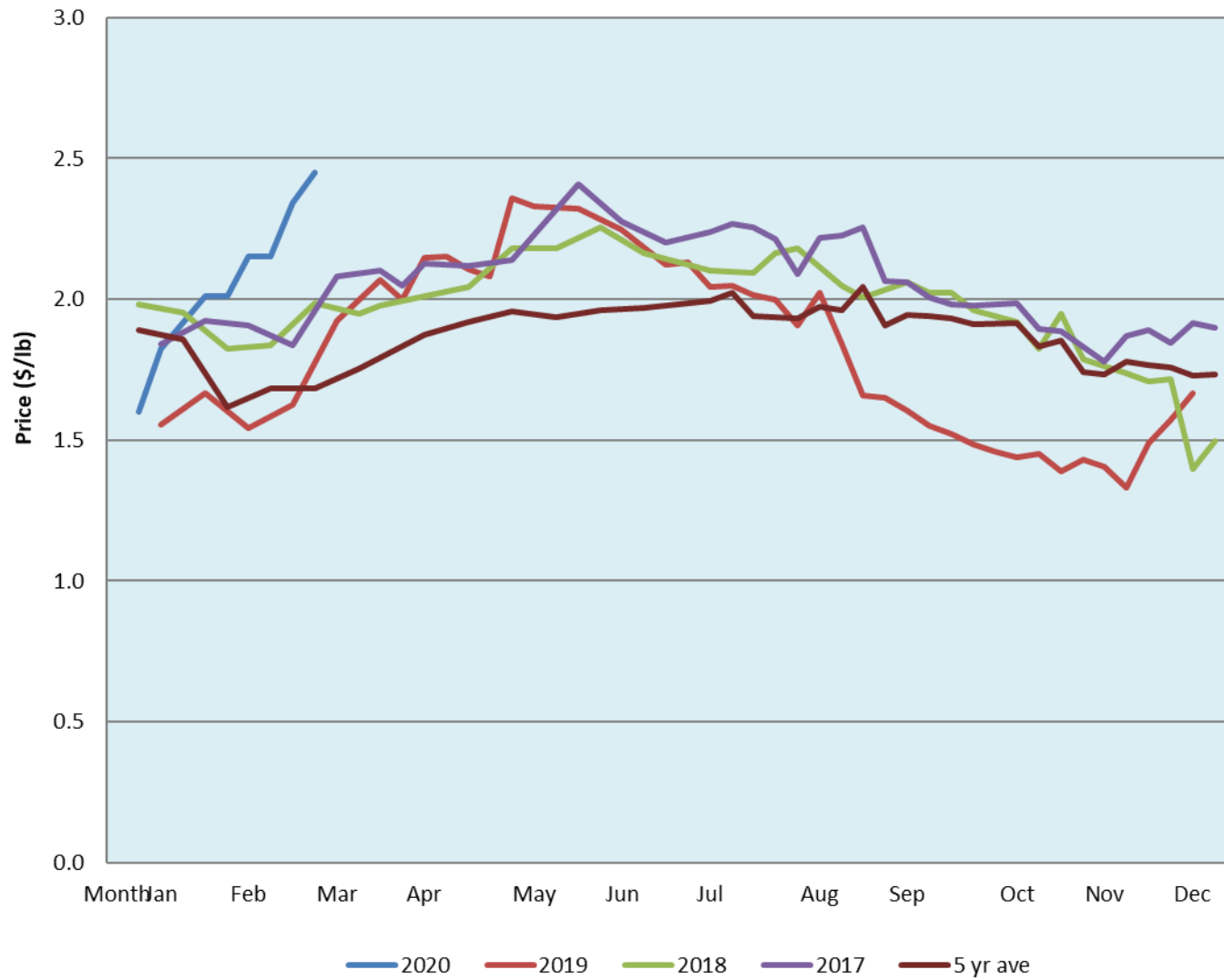


Alberta Live Animal Markets: Visit individual market websites for more information about applicable auction fees and upcoming sales										
Date	Sale	Lambs (\$/lb)		Lambs (\$/lb)		Lambs (\$/lb)		Sheep(\$/lb): Bred ewes \$/hd		Head
		Weight (lbs)	low - high	Weight (lbs)	low - high	Weight (lbs)	low - high		low - high	
No sale this week	Beaver Hill <a href="http://www.beaverhillauctions.com">www.beaverhillauctions.com</a>	0-54: wool	- - -	70-85: wool	- - -	86-105:wool	- - -	Ewes: wool	- - -	-
		0-54: hair	- - -			86-105:hair	- - -	Ewes: hair	- - -	
		55-69: wool	- - -	70-85: hair	- - -	106+:wool	- - -	Rams: wool	- - -	
		55-69: hair	- - -			106+:hair	- - -	Rams: hair	- - -	
								Bred Ewes	- - -	
						Ewe&Lamb(s)	- - -			
No sale this week	VJV Westlock <a href="http://www.vjvauction.com">www.vjvauction.com</a>	0-69: wool	- - -	70-85: wool	- - -	86-105: wool	- - -	Ewes: wool	- - -	-
						86-105: hair	- - -	Ewes: hair	- - -	
		0-69: hair	- - -	70-85: hair	- - -	106+: wool	- - -	Rams: wool	- - -	
						106+: hair	- - -	Rams: hair	- - -	
								Bred Ewes:wool	- - -	
						Ewe&Lamb:hair	- - -			
3-Mar-20	Olds Auction <a href="http://www.oldsauction.com">www.oldsauction.com</a>	30-50	- - -	70-80	2.50 - 2.80	90-100	2.40 - 2.50	Ewes	- - -	71  (incl.goats)
		50-60	2.70 - 2.80	80-90	2.55 - 2.90	100-110	- - -	Rams	2.00 - 2.50	
		60-70	2.50 - 2.80			110+	- - -	Bred Ewes	- - -	
Information unavailable	Picture Butte <a href="http://www.picturebutteauction.ca">www.picturebutteauction.ca</a>					Feeder	- - -	Slaughter Ewes	- - -	-
						Slaughter	- - -	Feeder Ewes	- - -	
								Ewe&lamb(s)	- - -	
								Bred ewes	- - -	
								Rams	- - -	
Ontario Live Animal Markets										
2-Mar-20	OSI <a href="http://www.ontariosheep.org">www.ontariosheep.org</a>	0-50	3.40 - 3.55	65-80	2.85 - 3.35	95-110	2.58 - 2.70	Sheep	1.41 - 1.95	660
		50-64	3.10 - 3.53	80-95	2.80 - 2.93	110+	2.40 - 2.75			
3-Mar-20	OLEX <a href="http://www.ontariosheep.org">www.ontariosheep.org</a>	0-50	2.25 - 4.75	65-79	3.08 - 3.54	95-109	2.55 - 2.80	Sheep	1.50 - 1.88	1831
		50-64	3.43 - 3.90	80-94	2.78 - 2.99	110+	2.38 - 2.66			
2-Mar-20	Embrun <a href="http://www.ontariosheep.org">www.ontariosheep.org</a>	0-50	3.87 - 4.20	65-79	3.10 - 3.27	95-109	2.38 - 2.64	Sheep	1.25 - 1.87	292
		50-64	2.90 - 3.57	80-94	2.65 - 3.17	110+	1.87 - 2.40			
27-Feb-20	Brussels <a href="http://www.ontariosheep.org">www.ontariosheep.org</a>	0-50	2.75 - 3.25	65-79	3.15 - 3.38	95-109	2.59 - 2.65	Sheep	1.58 - 1.87	251
		50-64	3.10 - 3.60	80-94	2.67 - 2.87	110+	1.95 - 2.25			
Alberta Lamb Producers does not endorse individual markets or verify prices provided.										

## Trends\* in auction price for heavy lambs in Alberta



\*Due to differences among auctions, prices are reported as 'trends' rather than averages.  
 This graph is updated on weeks with two or more markets reporting prices.