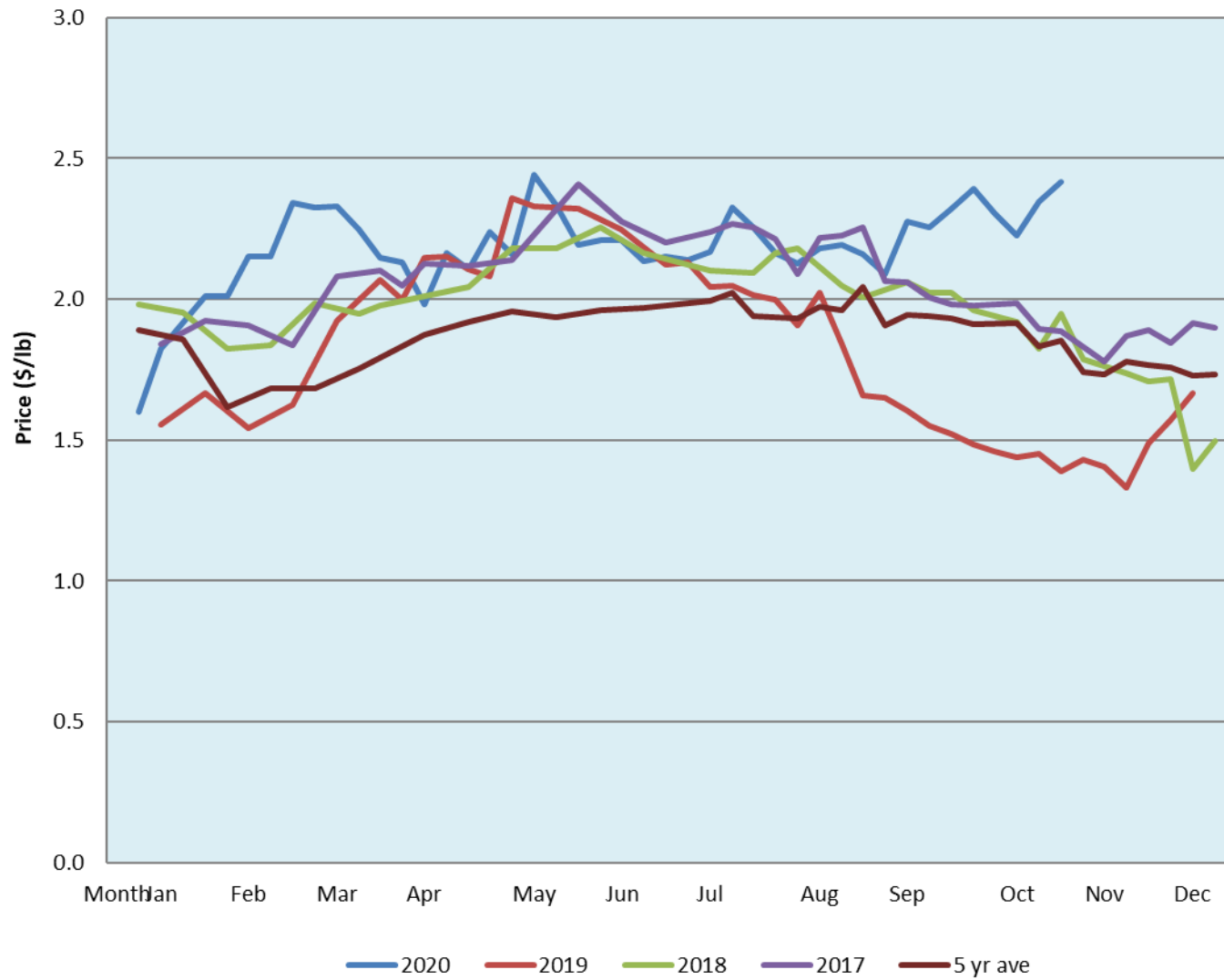


Alberta Live Animal Markets: Visit individual market websites for more information about applicable auction fees and upcoming sales										
Date	Sale	Lambs (\$/lb)		Lambs (\$/lb)		Lambs (\$/lb)		Sheep(\$/lb): Bred ewes \$/hd		Head
		Weight (lbs)	low - high	Weight (lbs)	low - high	Weight (lbs)	low - high		low - high	
2-Nov-20	Beaver Hill <a href="http://www.beaverhillauctions.com">www.beaverhillauctions.com</a>	0-54: wool	2.60 - 2.90	70-85: wool	2.70 - 2.85	86-105:wool	2.50 - 2.82	Ewes: wool	1.25 - 1.80	747
		0-54: hair	2.30 - 2.60			86-105:hair	2.42 - 2.65	Ewes: hair	1.30 - 1.90	
		55-69: wool	2.70 - 2.97	70-85: hair	2.60 - 2.75	106+:wool	2.40 - 2.66	Rams: wool	1.32 - 1.62	
		55-69: hair	2.50 - 2.90			Bred Ewes	2 - 3			
						106+:hair	2.35 - 2.55	Ewe&Lamb(s)	- - -	
3-Nov-20	VJV Westlock <a href="http://www.vjvauction.com">www.vjvauction.com</a>	0-69: wool	2.43 - 2.80	70-85: wool	2.30 - 2.60	86-105: wool	2.00 - 2.27	Ewes: wool	0.90 - 1.35	219
						86-105: hair	- - -	Ewes: hair	- - -	
		0-69: hair	- - -	70-85: hair	- - -	106+: wool	1.50 - 1.90	Rams: wool	1.35 - 1.65	
						106+: hair	- - -	Rams: hair	- - -	
								Bred Ewes:wool	- - -	
3-Nov-20	Olds Auction <a href="http://www.oldsauction.com">www.oldsauction.com</a>	30-50	1.00 - 2.11	70-80	2.57 - 2.64	90-100	2.31 - 2.47	Ewes	1.18 - 1.65	270 (incl.goats)
		50-60	1.60 - 2.22	80-90	2.47 - 2.57	100-110	2.18 - 2.45	Rams	1.00 - 1.71	
		60-70	1.91 - 2.60			110+	2.41 - 2.45	Bred Ewes	2 - 3	
31-Oct-20	Picture Butte <a href="http://www.picturebutteauction.ca">www.picturebutteauction.ca</a>					Feeder	2.09 - 2.56	Slaughter Ewes	1.09 - 1.28	-
						Slaughter	2.38 - 2.44	Feeder Ewes	- - -	
								Ewe&lamb(s)	- - -	
								Bred ewes	- - -	
								Rams	- - -	
Ontario Live Animal Markets										
Unavailable	OSI <a href="http://www.ontariosheep.org">www.ontariosheep.org</a>	0-50	0.00 - 0.00	65-80	0.00 - 0.00	95-110	0.00 - 0.00	Sheep	0.00 - 0.00	0
		50-64	0.00 - 0.00	80-95	0.00 - 0.00	110+	0.00 - 0.00			
3-Nov-20	OLEX <a href="http://www.ontariosheep.org">www.ontariosheep.org</a>	0-50	3.60 - 4.00	65-79	2.90 - 3.30	95-109	2.68 - 2.86	Sheep	2.00 - 2.50	1574
		50-64	3.30 - 3.85	80-94	2.68 - 2.93	110+	2.40 - 2.68			
2-Nov-20	Embrun <a href="http://www.ontariosheep.org">www.ontariosheep.org</a>	0-50	3.35 - 4.20	65-79	3.02 - 3.15	95-109	2.40 - 2.80	Sheep	1.65 - 2.00	390
		50-64	3.00 - 3.75	80-94	2.80 - 3.10	110+	2.40 - 2.90			
29-Oct-20	Brussels <a href="http://www.ontariosheep.org">www.ontariosheep.org</a>	0-50	1.13 - 2.52	65-79	2.62 - 3.07	95-109	2.54 - 2.65	Sheep	1.65 - 2.04	317
		50-64	2.53 - 3.12	80-94	2.64 - 2.80	110+	1.70 - 1.70			
Alberta Lamb Producers does not endorse individual markets or verify prices provided.										

### Trends\* in auction price for heavy lambs in Alberta



\*Due to differences among auctions, prices are reported as 'trends' rather than averages.  
This graph is updated on weeks with two or more markets reporting prices.