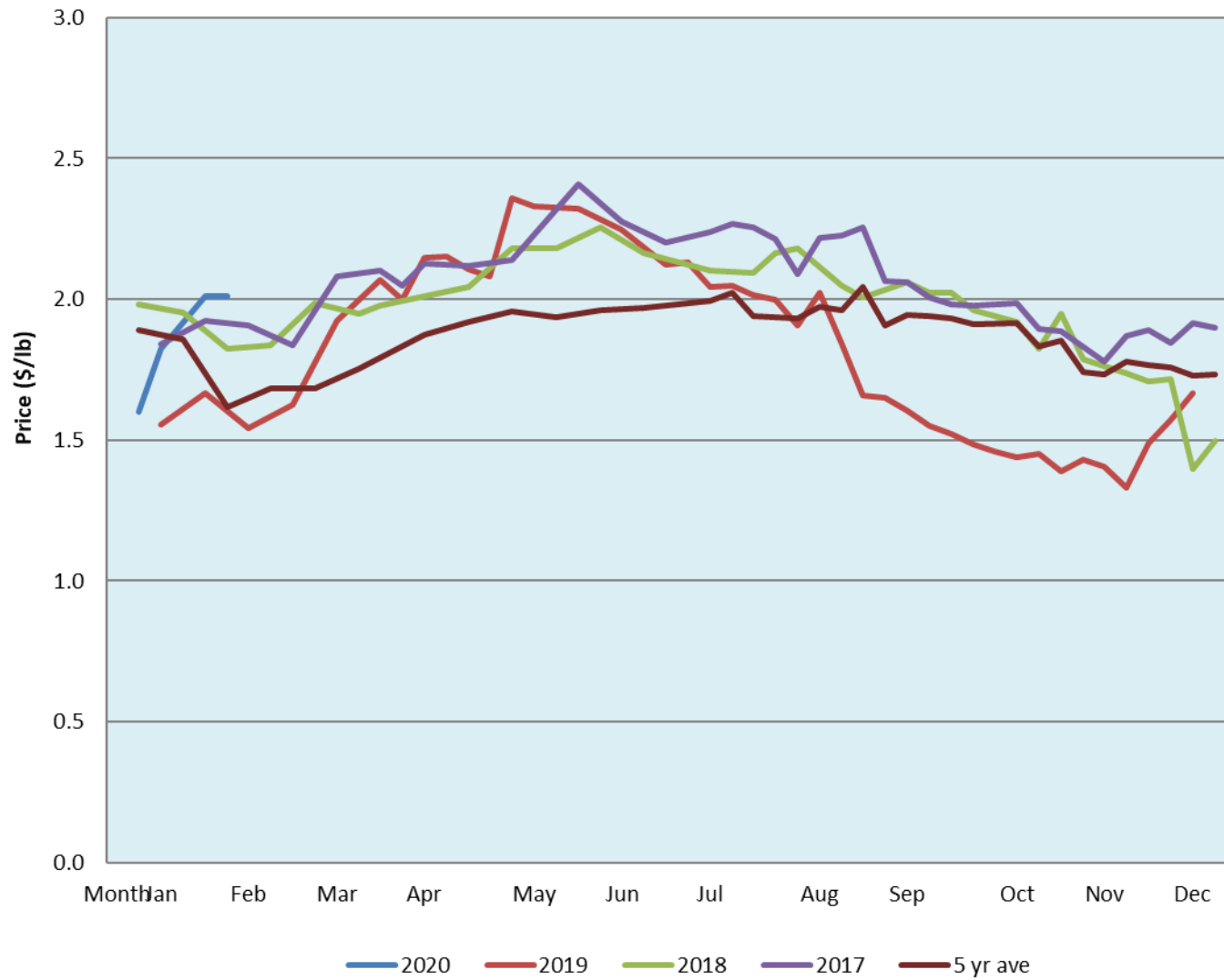


Alberta Live Animal Markets: Visit individual market websites for more information about applicable auction fees and upcoming sales										
Date	Sale	Lambs (\$/lb)		Lambs (\$/lb)		Lambs (\$/lb)		Sheep(\$/lb): Bred ewes \$/hd		Head
		Weight (lbs)	low - high	Weight (lbs)	low - high	Weight (lbs)	low - high		low - high	
No sale this week	Beaver Hill www.beaverhillauctions.com	0-54: wool	- - -	70-85: wool	- - -	86-105:wool	- - -	Ewes: wool	- - -	-
		0-54: hair	- - -			86-105:hair	- - -	Ewes: hair	- - -	
		55-69: wool	- - -	70-85: hair	- - -	106+:wool	- - -	Rams: wool	- - -	
		55-69: hair	- - -			106+:hair	- - -	Rams: hair	- - -	
						Bred Ewes	- - -			
		Ewe&Lamb(s)	- - -							
No sale this week	VJV Westlock www.vjvauction.com	0-69: wool	- - -	70-85: wool	- - -	86-105: wool	- - -	Ewes: wool	- - -	-
						86-105: hair	- - -	Ewes: hair	- - -	
		0-69: hair	- - -	70-85: hair	- - -	106+: wool	- - -	Rams: wool	- - -	
						106+: hair	- - -	Rams: hair	- - -	
								Bred Ewes:wool	- - -	
						Ewe&Lamb:hair	- - -			
4-Feb-20	Olds Auction www.oldsauction.com	30-50	0.90 - 1.00	70-80	2.10 - 2.25	90-100	1.80 - 2.00	Ewes	1.30 - 2.00	74 (incl.goats)
		50-60	2.00 - 2.20	80-90	2.00 - 2.20	100-110	1.80 - 1.90	Rams	1.50 - 1.67	
		60-70	2.10 - 2.40			110+	- - -	Bred Ewes	- - -	
1-Feb-20	Picture Butte www.picturebutteauction.ca					Feeder	2.17 - 2.26	Slaughter Ewes	- - -	-
						Slaughter	1.90 - 2.12	Feeder Ewes	- - -	
								Ewe&lamb(s)	- - -	
								Bred ewes	- - -	
								Rams	- - -	
Ontario Live Animal Markets										
3-Feb-20	OSI www.ontariosheep.org	0-50	4.30 - 4.30	65-80	2.80 - 3.23	95-110	2.58 - 2.73	Sheep	1.53 - 1.98	505
		50-64	3.40 - 3.63	80-95	2.68 - 3.18	110+	1.83 - 2.65			
4-Feb-20	OLEX www.ontariosheep.org	0-50	3.65 - 4.00	65-79	2.85 - 3.30	95-109	2.46 - 2.63	Sheep	1.43 - 1.83	1225
		50-64	3.18 - 3.58	80-94	2.55 - 2.88	110+	2.10 - 2.48			
3-Feb-20	Embrun www.ontariosheep.org	0-50	1.50 - 3.50	65-79	3.17 - 3.38	95-109	2.70 - 3.05	Sheep	1.42 - 2.00	334
		50-64	3.15 - 3.40	80-94	2.85 - 3.25	110+	2.57 - 2.90			
30-Jan-20	Brussels www.ontariosheep.org	0-50	2.75 - 3.29	65-79	2.85 - 3.32	95-109	2.60 - 2.80	Sheep	1.73 - 2.20	320
		50-64	3.33 - 3.40	80-94	2.59 - 2.86	110+	2.40 - 2.74			
Alberta Lamb Producers does not endorse individual markets or verify prices provided.										

Trends* in auction price for heavy lambs in Alberta



*Due to differences among auctions, prices are reported as 'trends' rather than averages.
This graph is updated on weeks with two or more markets reporting prices.