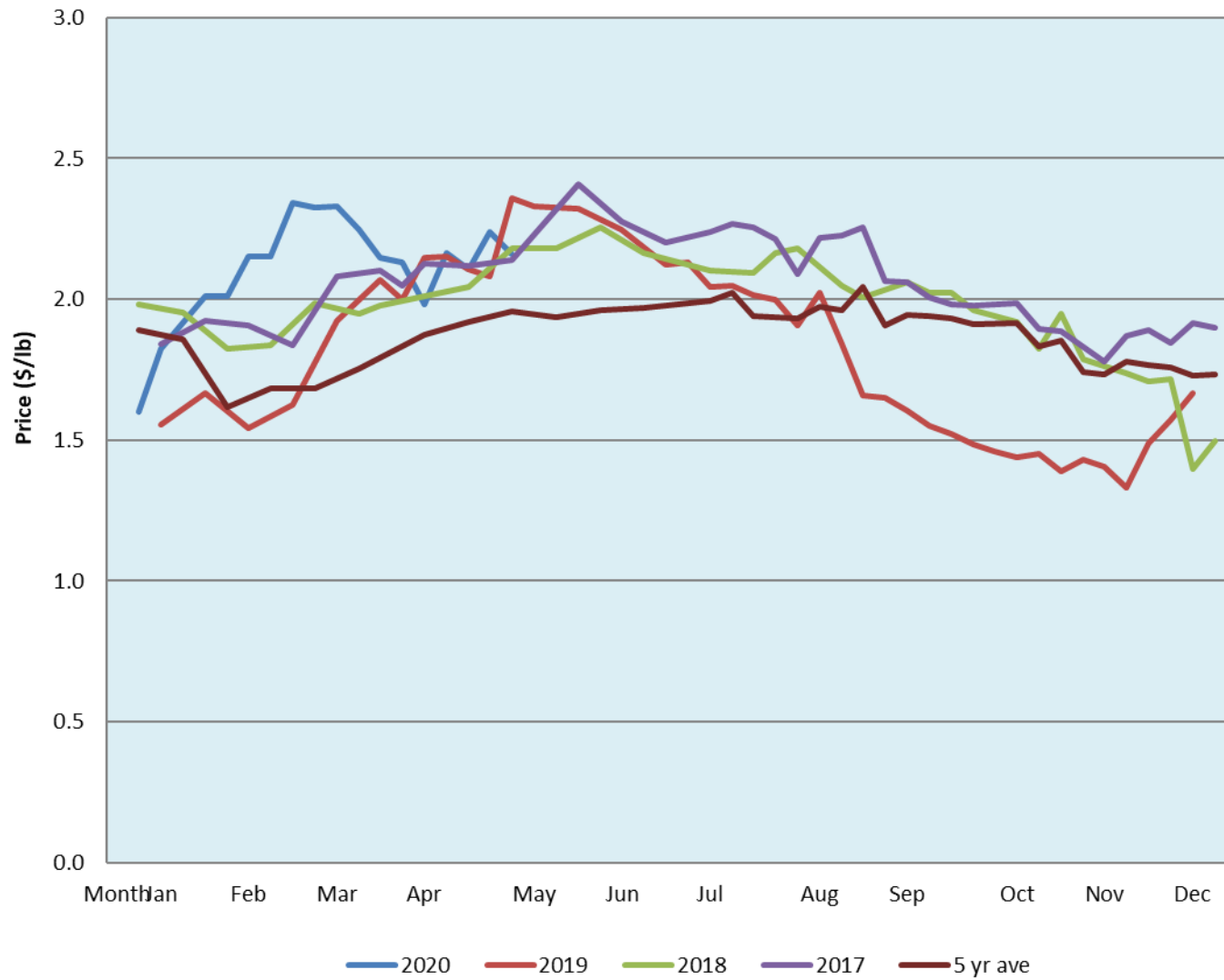


Alberta Live Animal Markets: Visit individual market websites for more information about applicable auction fees and upcoming sales										
Date	Sale	Lambs (\$/lb)		Lambs (\$/lb)		Lambs (\$/lb)		Sheep(\$/lb): Bred ewes \$/hd		Head
		Weight (lbs)	low - high	Weight (lbs)	low - high	Weight (lbs)	low - high		low - high	
4-May-20	Beaver Hill www.beaverhillauctions.com	0-54: wool	2.40 - 2.95	70-85: wool	2.50 - 2.85	86-105:wool	2.25 - 2.75	Ewes: wool	1.10 - 1.77	536
		0-54: hair	2.40 - 2.75			86-105:hair	2.10 - 2.40	Ewes: hair	1.10 - 1.57	
		55-69: wool	2.50 - 2.86	70-85: hair	2.35 - 2.70	106+:wool	1.90 - 2.30	Rams: wool	1.04 - 1.80	
		55-69: hair	2.30 - 2.80			106+:hair	1.80 - 2.15	Rams: hair	0.95 - 1.30	
								Bred Ewes	- - -	
						Ewe&Lamb(s)	3 - 4			
No sale this week	VJV Westlock www.vjvauction.com	0-69: wool	- - -	70-85: wool	- - -	86-105: wool	- - -	Ewes: wool	- - -	-
						86-105: hair	- - -	Ewes: hair	- - -	
		0-69: hair	- - -	70-85: hair	- - -	106+: wool	- - -	Rams: wool	- - -	
						106+: hair	- - -	Rams: hair	- - -	
								Bred Ewes:wool	- - -	
						Ewe&Lamb:hair	- - -			
5-May-20	Olds Auction www.oldsauction.com	30-50	1.50 - 1.75	70-80	2.30 - 2.60	90-100	2.20 - 2.35	Ewes	1.25 - 2.10	61 (incl.goats)
		50-60	2.25 - 2.35	80-90	2.30 - 2.60	100-110	2.00 - 2.30	Rams	1.40 - 2.15	
		60-70	2.25 - 2.30			110+	2.00 - 2.35	Bred Ewes	- - -	
2-May-20	Picture Butte www.picturebutteauction.ca					Feeder	2.65 - 2.95	Slaughter Ewes	1.05 - 1.28	-
						Slaughter	2.18 - 2.28	Feeder Ewes	- - -	
								Ewe&lamb(s)	- - -	
								Bred ewes	- - -	
								Rams	- - -	
Ontario Live Animal Markets										
4-May-20	OSI www.ontariosheep.org	0-50	3.30 - 3.60	65-80	2.75 - 3.40	95-110	2.40 - 3.11	Sheep	1.25 - 1.60	644
		50-64	3.25 - 3.53	80-95	2.48 - 3.25	110+	1.68 - 2.41			
5-May-20	OLEX www.ontariosheep.org	0-50	3.40 - 3.80	65-79	3.05 - 3.35	95-109	2.41 - 2.65	Sheep	1.10 - 1.55	2221
		50-64	3.13 - 3.48	80-94	2.30 - 2.73	110+	2.32 - 2.71			
4-May-20	Embrun www.ontariosheep.org	0-50	3.15 - 3.17	65-79	3.20 - 3.40	95-109	3.05 - 3.24	Sheep	1.05 - 1.65	246
		50-64	3.02 - 3.34	80-94	3.15 - 3.32	110+	1.55 - 3.05			
30-Apr-20	Brussels www.ontariosheep.org	0-50	2.75 - 3.25	65-79	2.92 - 3.25	95-109	2.48 - 2.66	Sheep	1.00 - 1.70	561
		50-64	2.85 - 3.19	80-94	2.62 - 2.78	110+	1.76 - 2.52			
Alberta Lamb Producers does not endorse individual markets or verify prices provided.										

Trends* in auction price for heavy lambs in Alberta



*Due to differences among auctions, prices are reported as 'trends' rather than averages.
This graph is updated on weeks with two or more markets reporting prices.